



*New arrivals relocate to communal shelters at the Wau PoC site. IOM/McLaughlin 2017*

Over 7.5 million people in South Sudan are in need of humanitarian assistance due to a devastating crisis that has displaced approximately 3.75 million people since 2013, including 2 million IDPs and 1.75 million people who have fled to neighbouring countries. The scale of humanitarian needs is unprecedented as insecurity continues to displace civilian populations across the country and limit the ability of families to meet their basic needs.

In Upper Nile, escalating conflict along the West Bank of the White Nile River in recent months has led to a significant movement of people toward Aburoc, Fashoda County, and Magenis, Manyo County, onward to the White Nile area of Sudan. IOM's Displacement Tracking Matrix (DTM) team and the Danish Refugee Council conducted a rapid population count on 4 June, identifying 10,298 individuals in Aburoc. The population in Aburoc has declined significantly by more than 50 per cent since the population count conducted in early March, which had identified over 21,000 people in need of assistance in the area. For more information, see <http://bit.ly/2st5REr>.

IOM health and water, sanitation and hygiene (WASH) teams are responding to cholera

outbreaks across South Sudan, where nearly 8,000 suspected cases have been reported since June 2016.

A health rapid response team (RRT) deployed to Jiech, in Jonglei's Ayod County, to support local partners and respond to a cholera outbreak that began in April after more than 140 suspected cases were reported. In Kapoeta North and South, Eastern Equatoria, an IOM WASH Emergency Preparedness and Response (EPnR) team is responding to a cholera outbreak through hygiene promotion and distribution of essential WASH items. IOM is also increasing access to safe drinking water by rehabilitating broken boreholes.

Needs remain high for an estimated 60,300 people displaced in and around Wau town due to fighting in June 2016 and April 2017. IOM is undertaking efforts to improve living conditions for an estimated 13,900 new arrivals at the protection of civilians (PoC) site adjacent to the UN Mission in South Sudan (UNMISS) base since April. IOM has constructed 73 new communal shelters in the general food distribution area, where the majority of new arrivals have settled. Despite crowded conditions, site improvement efforts continue to mitigate overcrowding and the impact of the rainy season.

## HIGHLIGHTS

Relief agencies respond to increased needs in Wau

Efforts continue to reach people affected by insecurity in Upper Nile

IOM teams respond to cholera outbreaks across the country

## KEY FIGURES

8 May - 4 June 2017



**2 million**

internally displaced persons (IDPs)

**1.75 million**

people displaced to neighbouring countries (Source: UNHCR)



**130,100\***

conflict-affected people accessed safe drinking water  
\*additional people reached through EPnR



**46,389**

health consultations conducted



**11,000**

IDPs reached with direct PSS



**1,880 MT**

humanitarian cargo transported for IOM & humanitarian partners

## Bentiu PoC Site

IOM provides multi-sector humanitarian assistance to over 117,000 IDPs at the Bentiu PoC site. As camp manager, IOM coordinates humanitarian services and maintains site infrastructure and the Humanitarian Hub. Over the month of May, the population decreased from 119,130 to 117,046 IDPs, largely attributed to IDPs leaving to attend to farms and the increased distribution of food to areas outside of the PoC site.

To mitigate the impact of the rainy season and reduce the risk for another cholera outbreak in the PoC site, IOM conducted a mass oral cholera vaccine (OCV) campaign, reaching over 72,500 people with the vaccine.

IOM continues to manage a tuberculosis (TB) testing and treatment centre at the PoC site, also benefiting patients in Bentiu town. This year, over 60 TB patients have successfully completed the treatment.

## Wau

IOM and relief agencies continue to respond to a large increase in the number of IDPs at displacement sites in Wau town following violence in early April. Over 60,300 people are displaced in town, including 39,165 IDPs at the PoC site adjacent to the UNMISS base and 21,100 at collective centres (Cathedral, Nazareth, Lokoloko, St. Joseph and Hai Masna).

IOM and relief agencies continue to provide services across displacement sites, although the influx places strain on existing capacity and resources. There is limited space available for new arrivals at the already crowded PoC site and other centres. In early June, IOM and partners distributed relief items, including mosquito nets, buckets and dignity kits, to 480 vulnerable households at the Hai Masna site.

IOM continues to provide primary health care services at the PoC site, Cathedral and Nazareth, as well as a mobile response at Hai Masna.

## Malakal PoC Site

IOM is responding to the humanitarian needs of nearly 30,600 IDPs at the Malakal PoC site. IOM continues to provide WASH and health care assistance, as well as conduct site improvement and maintain the Humanitarian Hub.

To prevent flooding during the rainy season and mitigate the risk for the spread of disease, IOM is undertaking site maintenance activities across the site, including culvert installation and cleaning. Health and hygiene promoters continue regular sensitization activities, with a focus on school-age children and sharing hygiene best practices.

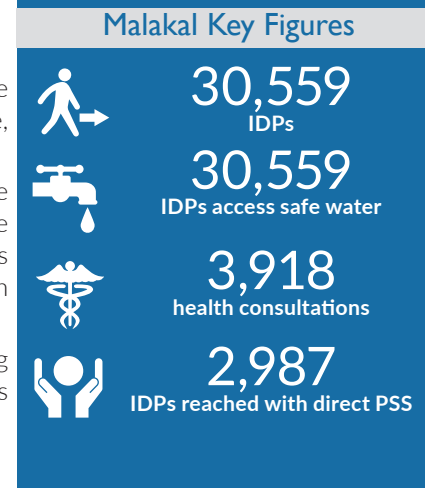
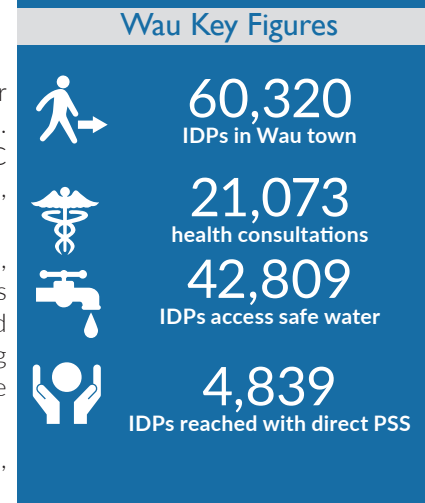
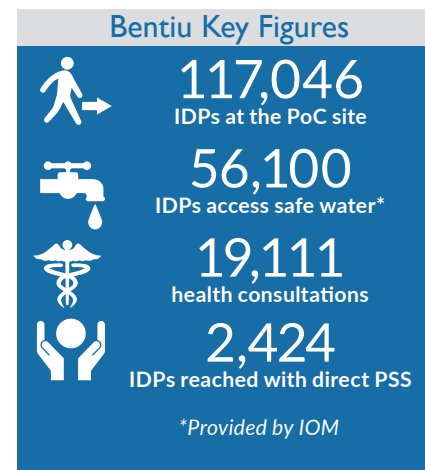
IOM psychosocial support (PSS) activities continue at the PoC site, reaching nearly 3,000 people with direct assistance, including counseling, home visits and support group networks.

## Melut PoC Site

IOM provides WASH services to 651 IDPs at the Melut PoC site in Upper Nile. IDPs are receiving an average of 15.7 L of safe drinking water per person per day. WASH staff continue maintenance of sanitation facilities, as well as hygiene promotion focused on disease prevention.

## Renk

In Renk County, IOM provides clinical assistance to IDPs, returnees and host communities, conducting 2,287 consultations and delivering 43 babies from 8 May to 4 June. Health officers also vaccinated 354 children under the age of five against common diseases.



## Bor PoC Site

IDPs in Bor continue to participate in seven psychosocial support mobile teams, reaching an average of 670 people per week with direct PSS services. IOM continues to manage the Humanitarian Hub to shelter humanitarians working at the site.

## Rapid Response, EPnR, Frontline

A multi-sector IOM team is providing assistance to displaced families displaced by recent insecurity in Upper Nile. An EPnR team is providing safe drinking water to IDPs, including in Aburoc and Magenis, through water trucking and treatment; these activities are often complicated by logistic and security challenges. DTM staff are tracking movements of IDPs in Aburoc and Magenis. Flow monitoring results indicate that, initially, many people were moving out of Aburoc towards Magenis and onwards to Kor Woral refugee camp in Sudan. However, since 23 May, DTM has noted a growing trend of people leaving Aburoc towards other areas of Fashoda County, such as Kum, Lul, Nyigeer and Yong. More information at <http://bit.ly/2st5REr> and <http://bit.ly/2seu80x>.

In response to the cholera outbreak in Kapoeta North and South, an EPnR team is conducting hygiene promotion activities aimed at mitigating the spread of the disease, as well as increasing access to safe drinking water by rehabilitating boreholes and distributing soap and water purification tablets. IOM continues hygiene and health promotion activities in Bentiu town, reaching more than 12,700 people during the first week of June. Activities are focused heavily on cholera prevention through good household hygiene habits. Regular EPnR activities continue across Wau town, including for host communities affected by the influx of IDPs and reduced access to services.

An IOM frontline shelter team, in coordination with Intersos, recently completed distribution of shelter and relief items to 2,000 households in Akobo. The distribution included plastic sheeting, sleep mats, mosquito nets, blankets and half kitchen sets. The majority of households were displaced from insecure areas of Jonglei, including Waat, Yuai, Motot and Walgak.

## In Focus: Women's Leadership in Displacement Sites

As camp manager of the Bentiu PoC site, IOM works with all levels of the community to ensure effective delivery of humanitarian services. Women play a powerful and critical role, helping to maintain peace and security in the community and raise issues affecting the most vulnerable in the site.

In the Bentiu PoC site, women make up over 50 per cent of the IDP population. Many have lived in the site for over three years, facing challenges that often seem unsurmountable. Women leaders have taken it upon themselves to form their own support groups, canvassing their neighbourhoods to encourage fellow women to find ways to cope together.

Working with these support groups that the women have formed, IOM began a leadership programme for 100 women, who were each identified as leaders in their groups and blocks. The programme was shaped by their needs and ambitions.

"In South Sudan, women are often not in leadership positions. The leadership training has taught me skills that I will take back to my fellow women, encouraging them to be leaders, too," explained Elizabeth.

Over the course of five weeks, the women studied leadership topics, such as conflict resolution, during weekly sessions. At the end of the course, several of the women were chosen to receive small grants to begin income generating activities.

At the graduation ceremony on 19 May, the positive spirit was contagious. At the end of the graduation, Elizabeth said, "One day, I hope to contest elections for camp leadership, and, once peace comes, even political office."



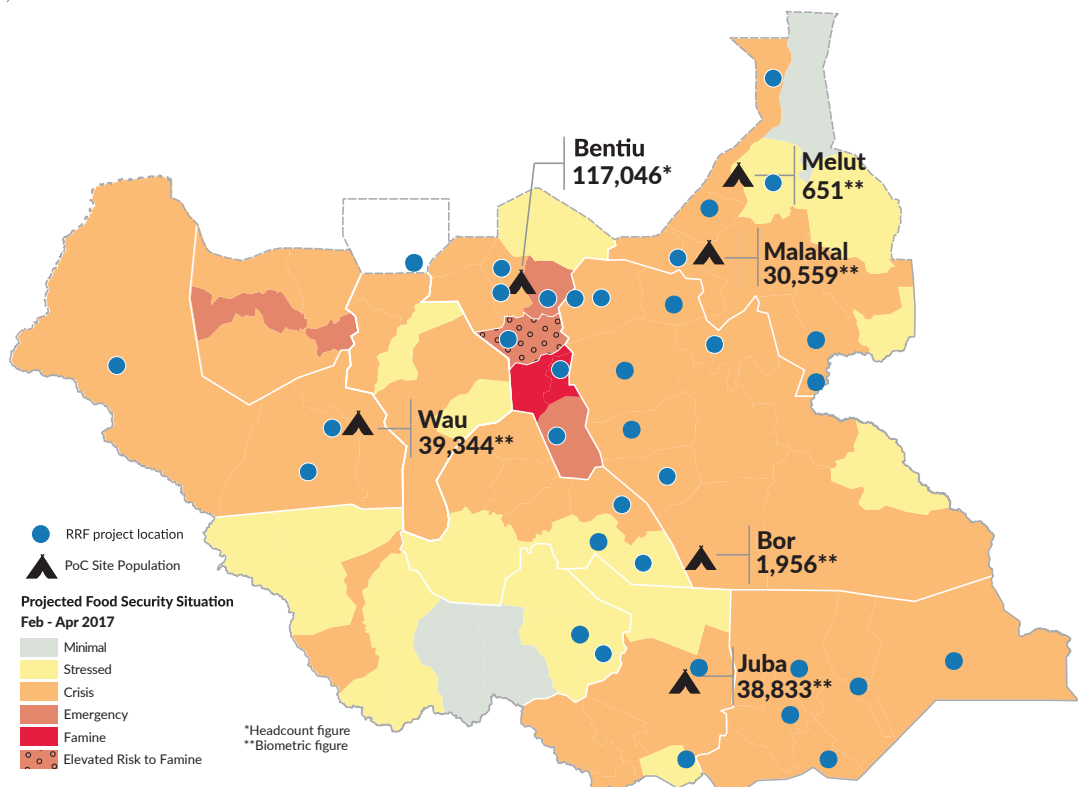
Graduates of the women's leadership training. IOM/McLaughlin 2017



Elizabeth, graduate of the women's leadership training. IOM/McLaughlin 2017

## Rapid Response Fund (RRF)

With funding from USAID's Office of U.S. Foreign Disaster Assistance, IOM manages the RRF to support relief agencies across the country to swiftly implement specific emergency interventions. The RRF is currently funding 10 non-governmental organizations (NGOs): Doctors with Africa CUAMM continues to respond to the cholera outbreak in Yirol East and West, as well as Awerial, through health care support and hygiene promotion; Save the Children is providing mobile health care services in Abyei; AVSI Foundation is distributing relief items in Kidepo Valley, Ikotos; the American Refugee Committee (ARC) is providing health support at the IDP sites in Kajo Keji and referring serious cases to health centres in Uganda; ARC is also responding to the cholera outbreak in Kapoeta East and South by conducting health and hygiene promotion and NFI distributions; Christian Mission for Development is responding to the cholera outbreak in Ayod through borehole rehabilitation, hygiene promotion and distribution of NFIs; Sudan Medical Care is responding to the cholera outbreak in Ayod, providing support at oral rehydration points and cholera treatment centres, conducting hygiene promotion and distributing NFIs; World Concern Development Organization is distributing relief items to displaced households in Kuajena and Hai Masna near Wau town; Care for Children and Old Age South Sudan is conducting hygiene promotion in Yirol town; and the Catholic Medical Mission Board is providing protection support in Yambio, Ezo and Nzara.



The names and boundaries on the maps in this presentation do not imply official endorsement or acceptance by the Government of South Sudan or IOM. These maps are for planning purposes only. IOM cannot guarantee that these maps are error free and therefore we accept no liability for consequential and indirect damages arising from the use of these map products.

### Funding for IOM South Sudan's emergency operation is provided by



**CENTRAL  
EMERGENCY  
RESPONSE FUND**





**USAID**  
FROM THE AMERICAN PEOPLE





Cooperazione Italiana  
allo Sviluppo  
Ministero degli Affari Esteri  
e della Cooperazione Internazionale



Schweizerische Eidgenossenschaft  
Confédération suisse  
Confederazione Svizzera  
Confederaziun svizra



Funded by  
European Union  
Humanitarian Aid



**UKaid**  
from the British people



From  
the People of Japan



The  
Common  
Humanitarian Fund  
South Sudan