



*IOM maintained health services in Malakal through a temporary clinic from February–May. IOM/Doyle 2016.*

IOM teams continue lifesaving humanitarian activities across South Sudan, where more than 6.1 million people are in need of assistance. Since December 2013, the crisis has displaced more than 2.4 million people, including 720,400 who have fled to neighbouring countries and more than 1.69 million others who remain internally displaced.

According to a recent food insecurity analysis by the UN World Food Programme (WFP), South Sudanese are facing the most severe lean season since independence due to insecurity, poor harvests and displacement. The analysis predicts that 5 million people may face severe food insecurity in the coming months, compared to 4.6 million people during the same time last year.

A recent population registration in Nimni, approximately 30km from Bentiu town, revealed that 860 people previously registered for assistance in the UN protection of civilians (PoC) site in Bentiu have recently returned to Nimni. IOM and the International Humanitarian

Partnership (IHP) recently completed a light base camp in Nimni to support a scale-up of humanitarian services for vulnerable households and enable a more sustained humanitarian presence in the area.

In response to an increase in measles cases this year, IOM has participated in measles vaccination campaigns in Aweil South and West counties, Bentiu, Malakal and Yirol East and West counties, reaching approximately 131,000 children. As of mid-May, 1,321 suspected measles cases have been reported by the Health Cluster and the South Sudan Ministry of Health.

In advance of the rainy season, IOM and the Shelter/Non-Food Items (NFIs) Cluster are pre-positioning shelter materials and relief items in key locations across the country before vast areas become inaccessible by road.

An IOM team is on the ground in Renk, near the Sudan–South Sudan border, to begin a distribution of emergency relief items—such as mosquito nets and shelter materials—for 400 IDP households displaced in late March.

### HIGHLIGHTS

131,000 children vaccinated against measles

IOM rebuilds clinic after destruction in Malakal PoC site

New light base camps expand humanitarian presence in Unity

### KEY FIGURES

16 – 22 May 2016

1.69 million displaced internally and 720,400 displaced to neighbouring countries



88,200 IDPs accessed safe drinking water

2,639 MT humanitarian cargo transported



5,900 health consultations conducted

1,450 IDPs received psychosocial support



## Bentiu PoC Site

IOM provides multi-sector humanitarian assistance to approximately 98,600 IDPs at the Bentiu PoC site in coordination with UN and non-governmental organization (NGO) partners.

### CCCM

IOM serves as camp manager, coordinating humanitarian services and maintaining infrastructure at the site.

Since March, the number of people residing in the site has decreased by 15 per cent, as exits outpace new arrivals. During the first two weeks of May, IOM recorded approximately 1,000 arrivals and 1,700 exits. The main reasons cited for leaving include preparing farmland, joining and visiting families and lack of shelter. The majority of exits were only partial family households, indicating that families are cautiously testing the security atmosphere.

For further information on displacement data and trends in South Sudan, please refer to <http://www.iomsouthsudan.org/tracking/index.php>.

### Site Development

Throughout 2015, IOM and partners expanded and rehabilitated an overall area of 1,685,460m<sup>2</sup>. The expansion works have resulted in a marked improvement in living standards, with enhancements in organization, block spacing, drainage, external security ditch and berm, and road networks. Overall, the project has alleviated congestion, mitigated flood risks and overcrowding, and reduced health risks and protection concerns.

### Health

From 16–22 May, IOM health care staff conducted more than 3,000 consultations at its two clinics at the Bentiu PoC site. The most common medical conditions were respiratory tract infections and malaria. To prevent the spread of disease, especially during the upcoming rainy season, IOM reached more than 3,100 people with health education messages.

IOM continues to test suspected cases of tuberculosis (TB) for patients in the PoC site and those who visit IOM's mobile clinic in Bentiu town. To date, 285 people have been tested and 55 people are undergoing treatment.

### Water, Sanitation and Hygiene (WASH)

IOM is providing safe drinking water to approximately 49,500 people in Sectors 2 and 3, as well as supplying water from the Surface Water Treatment (SWAT) plant to Sector 5. Staff monitor the quality of the water on a daily basis to ensure it is safe for consumption and to reduce the spread of waterborne diseases.

IOM hygiene promoters have initiated a programme at primary schools in the PoC site called "Good Morning Children." Team members visit the schools during their morning assembly and provide health and hygiene promotion tips, such as hand washing instructions, personal hygiene tips and cholera prevention.

### Psychosocial Support (PSS)

IOM is addressing psychosocial needs of IDPs in Bentiu, with a focus on youth and adults and community-driven programming. During the week of 16 May, more than 1,000 people participated in the programme. In view of frequent crimes in the PoC site, the men and adult support groups recently met to discuss strategies for reducing insecurity.

## Bentiu Town

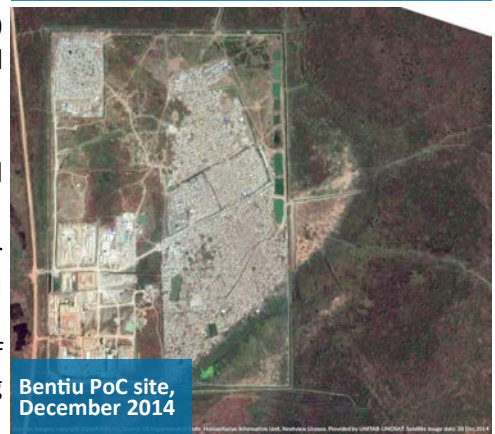
### Registration

IOM continues to register IDPs in Bentiu town, including individuals from Juba and nearby areas in Unity. As of 22 May, IOM had registered nearly 28,500 people for assistance.

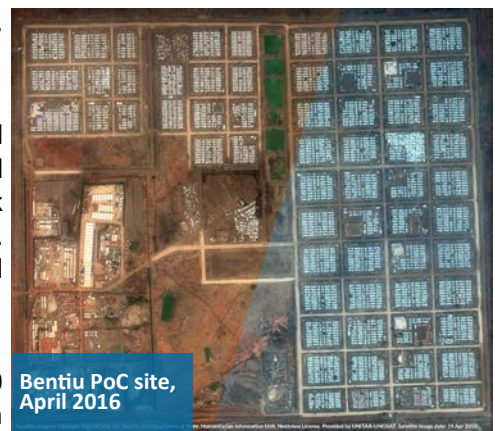
### Health

IOM is running a mobile health care clinic at the Bentiu State Hospital, offering primary health care services, maternal care, and testing for TB. During the week of 16 May, IOM conducted nearly 1,000 health consultations and reached more than 700 people through health education messages.

Bentiu PoC Site: Before and After Site Expansion



Bentiu PoC site, December 2014



Bentiu PoC site, April 2016

Photos courtesy of UNITAR-UNOSAT.

## Malakal PoC Site

IOM is responding to the humanitarian needs of approximately 38,000 IDPs at the Malakal PoC site. Following destruction of an attack in February, IDPs and humanitarians continue efforts to rebuild and prepare for the rainy season.

### CCCM

IOM's Displacement Tracking and Monitoring (DTM) team is conducting a registration verification exercise to accurately determine the current number of people sheltering in the site following the February attack as well as recent exits and entries.

To provide accommodations and work space for humanitarians at the PoC site, IOM manages the Humanitarian Hub and Logistics Hub, providing space for more than 250 humanitarian workers from 29 organizations.



Biometric registration in Malakal. IOM/Mohammed 2016.



Medical teams return to improved facilities in Malakal. IOM/McLaughlin 2016.

### Health

After the February attack destroyed IOM's two clinics, IOM operated out of a temporary tented clinic for several months. On 16 May, just in time before the onset of the rainy season, IOM was able to move back to its old location in Sector 2 and operate from improved facilities. During the week of 16 May, IOM staff conducted more than 900 health consultations, helped deliver 10 babies and vaccinated 70 children against common diseases.

In coordination with health partners, IOM supported a measles vaccination campaign, vaccinating nearly 8,000 children in the PoC site. Health promotion activities also focused on signs and symptoms of measles and the importance of immunization.

### WASH

IOM is providing an average of 15.4 litres (L) of safe drinking water per person per day for all IDPs residing at the Malakal PoC site. IOM

teams continue sanitation work, such as liquid and solid waste management, latrine construction and rehabilitation and garbage collection. Land clearing and site preparation are ongoing for an Emergency Waste Management Systems and a Waste Stabilization Pond.

## Melut PoC Site

### WASH

IOM provides WASH services to nearly 700 IDPs at the Melut PoC site in Upper Nile. IDPs are receiving an average of 37L of safe drinking water per person per day. IOM continues regular health and hygiene promotion activities, with a focus on children.

## Renk

### Health

In Renk County, Upper Nile, IOM provides clinical assistance to IDPs, returnees and host communities, conducting 970 consultations and delivering 12 babies during the week of 16 May. Midwives recently began health education sessions, in coordination with the County Health Directorate, to educate women on the importance of breastfeeding and provide information on family planning.

## Bor PoC Site

### PSS

IDPs in Bor continue to participate in seven PSS mobile teams, with more than 400 IDPs benefiting from activities during the week of 16 May. The women's group recently discussed expectations on what could happen should they leave the PoC site and shared possible coping mechanisms that could ease that transition.



Breastfeeding class in Renk. IOM/2016.



Construction of light base camp in Nhialdiu. IHP/2016.

## Light Base Camps

In partnership with IOM, the International Humanitarian Partnership (IHP) is constructing light base camps to enable effective humanitarian presence in deep field locations. The camps provide accommodation and office space, as well as solar-powered electricity and sanitation facilities. IHP engineers and IOM technicians deploy and set-up each camp, which is individually managed by a host organization.

Light base camps are operational in Koch, Leer, Nimni and Wau Shilluk. IHP teams are currently on the ground in Nhialdiu setting up an additional camp to support humanitarian organizations extending the reach of their services to populations in areas surrounding Bentiu.

## Shelter/NFI Frontline Response

IOM manages the shelter and NFIs core pipeline to ensure partners have sufficient and timely access to key shelter and relief items. In order to maximize the opportunity to transport stock by road in the dry season, IOM continues to pre-position stock in strategic field locations across the country.

During the week of 16 May, 5,000 plastic sheets were dispatched from Juba to Bentiu; 5,000 blankets, 2,000 sleeping mats, 6,000 mosquito nets and 2,000 buckets were received in Rumbek; and the dispatch of 20,000 wooden poles and 13,800 bamboo bundles from Wau to Bentiu continued.

Since the conflict erupted in December 2013, IOM frontline teams have reached more than 85,700 households with relief item support and nearly 15,400 households with shelter materials. Shelter experts deploy on assessment missions across the country, recently completing a mission in Nyal, which has served as a safe haven for civilians fleeing armed conflict in southern Unity. Largely, conditions did not indicate an emergency need for shelter and NFIs, partly due to distributions in 2015 and local availability of shelter materials.

A team is currently conducting a shelter-needs assessment in the Bentiu PoC site and Bentiu town in coordination with Concern International.



IOM shelter team travels to Nyal islands to conduct an assessment with Oxfam and World Vision. IOM/Davies 2016.



CTS trucks deliver shelter materials to Bentiu PoC site. IOM/Mohammed 2016.

## Common-Transport Service (CTS)

The IOM-operated CTS is a free-for-user service for transporting humanitarian supplies in South Sudan to help partners deliver assistance to vulnerable populations. The service is crucial for pre-positioning supplies before the rainy season, which cuts off more than 60 per cent of the country from road travel.

During the week of 16 May, 15 CTS trucks delivered more than 2,639 MT of humanitarian cargo—including shelter and construction materials, seeds, tools, soap, maize and fishing kits—to Bentiu, Bor, Malakal, Melut and Rumbek. The materials will support the programmes of a 12 relief organizations located in both deep-field areas and PoC sites.

## Rapid Response Fund (RRF)

With funding from the USAID Office of U.S. Foreign Disaster Assistance, IOM manages the RRF to support relief agencies across the country to swiftly implement specific emergency interventions.

**Doctors with Africa (CUAMM):** CUAMM provides health care services, including vaccinations, hygiene promotion and nutrition support, to IDPs and conflict-affected communities in Mundri East County.

**International Medical Corps (IMC):** IMC is improving access to emergency health services to address the immediate needs of conflict-affected households in Adok, Leer County. In addition, IMC is addressing increasing levels of malnutrition of IDPs in Malakal PoC site and Malakal town through improved screenings and nutrition education for mothers and caregivers.

**Rural Water and Sanitation Support Agency (RUWASSA):** RUWASSA is increasing access to safe drinking water for IDPs in Mingkaman, following the recent influx of IDPs to the area.

**Solidarités International:** To support IDPs still living in the old PoC sites in Malakal after the February attack, Solidarités is conducting hygiene promotion activities, with a focus on children.

**World Vision:** World Vision is trucking clean drinking water to 7,000 people in Kor Adar, Melut County, until the local SWAT system fills up.

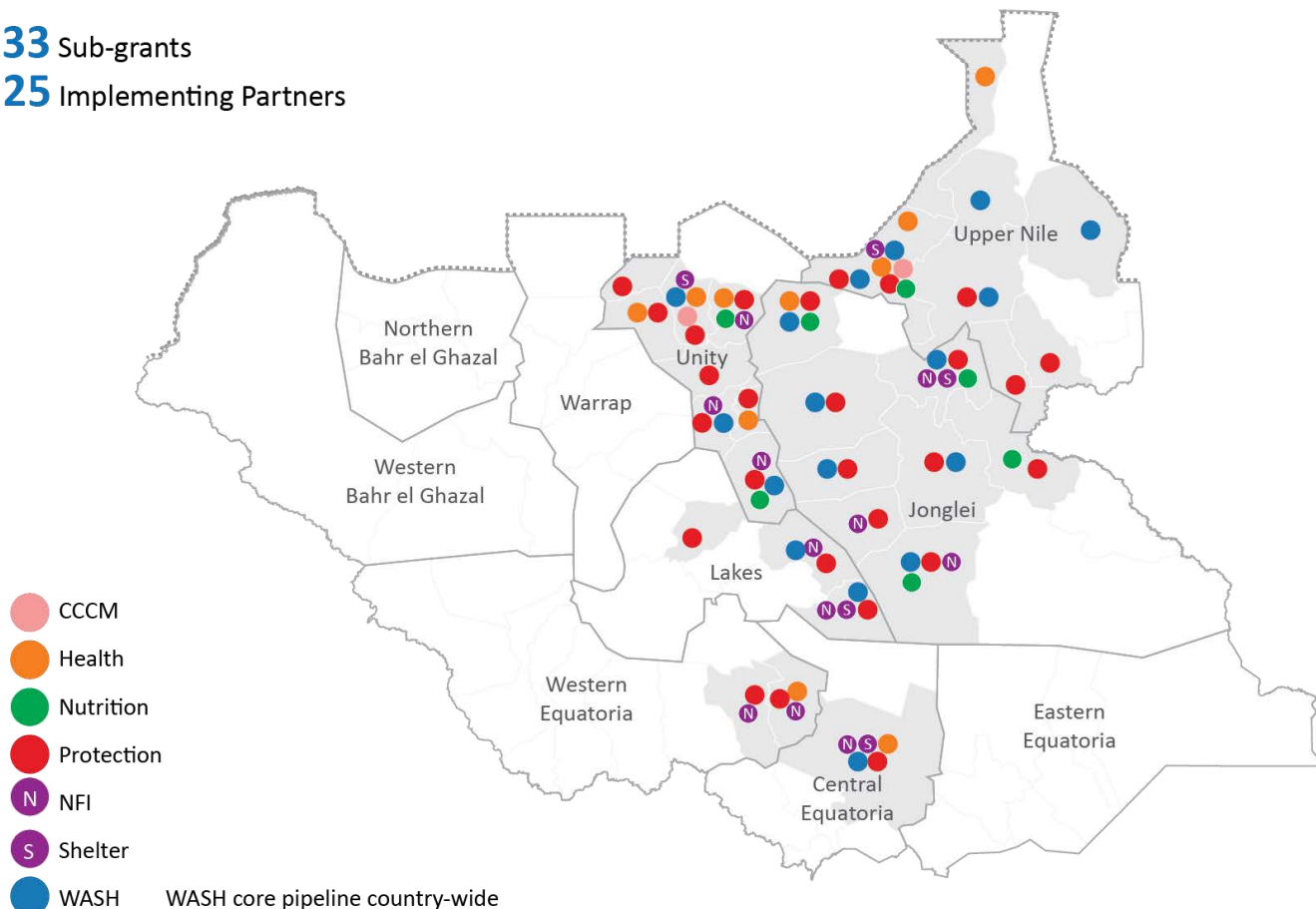
**Mundri Active Youth Association (MAYA):** To support conflict-affected and vulnerable populations in Mundri East and West counties, MAYA is providing child protection activities, including child friendly spaces, community dramas and education.

**Concern Worldwide:** Concern Worldwide will implement a Rapid Multi-Sector Emergency Response in Kuach and Nimni, Guit County, through WASH and Shelter/NFI assistance. In addition, Concern will provide regular malnutrition screening and treatment.

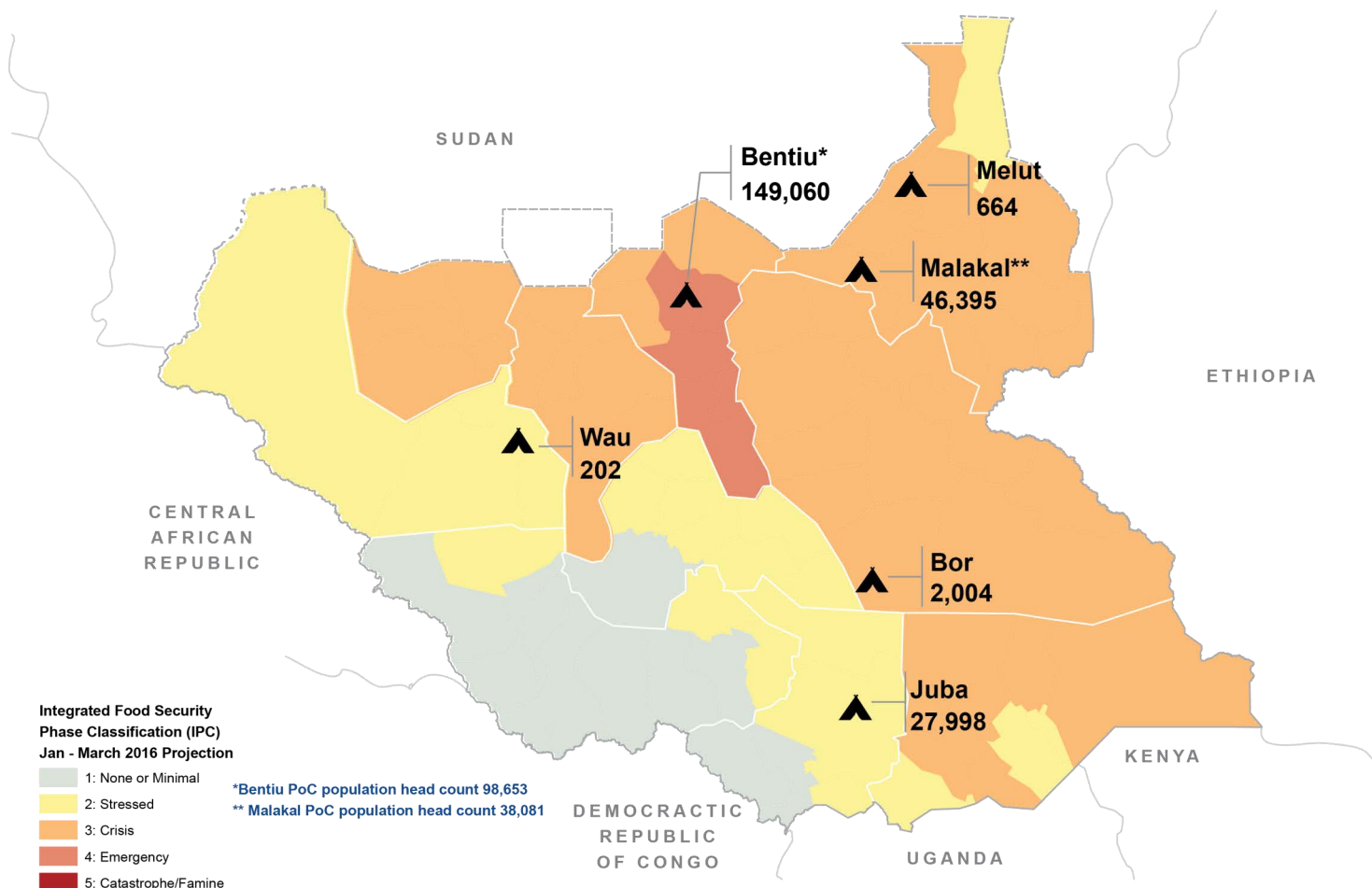
### Rapid Response Fund (RRF) – 2015 - 2016

**33** Sub-grants

**25** Implementing Partners



# UN PoC Sites and IPC\* Data



The names and boundaries on the maps in this presentation do not imply official endorsement or acceptance by the Government of South Sudan or IOM. These maps are for planning purposes only. IOM cannot guarantee that these maps are error free and therefore we accept no liability for consequential and indirect damages arising from the use of these map products.

Data Source: IOM, OCHA, IPC (Dec 2015 update)

Creation date: 27 May 2016

Funding for IOM South Sudan's emergency operation is provided by



**From the People of Japan**









Funded by European Union Humanitarian Aid









