

### HIGHLIGHTS

IOM and partners continue to respond to the influx of IDPs at the Bentiu and Malakal PoC sites

More than 37,700 IDPs receive first-round oral cholera vaccine at Malakal PoC

Multi-agency effort delivers more than 8,500 survival kits in Greater Upper Nile



IOM midwife helps deliver a newborn at the Malakal PoC site. IOM/Bannon 2015

IOM provides humanitarian assistance to vulnerable populations across South Sudan as conflict and food insecurity continue to drive increased needs and displacement. Since December 2013, the crisis has displaced more than 2.2 million people, including 622,600 people who have fled to neighbouring countries and approximately 1.6 million people who remain internally displaced.

Access constraints continue to hamper humanitarian assistance activities, particularly in parts of Greater Upper Nile, and prompt displacement. Access to Melut County, Upper Nile, has remained difficult since fighting in mid-May. Humanitarian agencies have recently gained limited access to deliver food and conduct needs assessments in Wau Shilluk, Upper Nile State, where populations have been cut-off from assistance for several months.

IOM is responding to the recent influx of civilians at the UN Mission in South Sudan (UNMISS) protection of civilians (PoC) site in Malakal, Upper Nile. Although the number of new arrivals has decreased significantly in recent weeks, capacity to shelter and provide services remains constrained. More than 45,400 IDPs are currently sheltering at the site, which was designed for only 18,000

people. IOM expects new arrivals to increase in the coming months.

IOM is coordinating closely with relief agencies, camp management and UNMISS to provide new arrivals with access to safe drinking water, latrines and shelter. Relief agencies and UNMISS are constructing a contingency area with communal shelters to house new arrivals and have begun relocating IDPs to the area.

Nearly 114,700 IDPs are seeking shelter at the PoC site in Bentiu, Unity State, an increase of more than 30 per cent since early July. IOM is supporting contingency plans to ensure IDP access to shelter and humanitarian services. New arrivals continue to cite food needs and insecurity in surrounding areas of Unity as the main reasons for seeking shelter at the PoC.

IOM and partners continue to respond to the cholera outbreak in Juba, Central Equatoria State, and Bor, Jonglei State. In coordination with health partners, IOM recently completed the first of a two-round oral cholera vaccine (OCV) campaign at the Malakal PoC site, vaccinating more than 37,700 people against cholera between 12 and 16 August. IOM plans to begin the second round in the coming days.

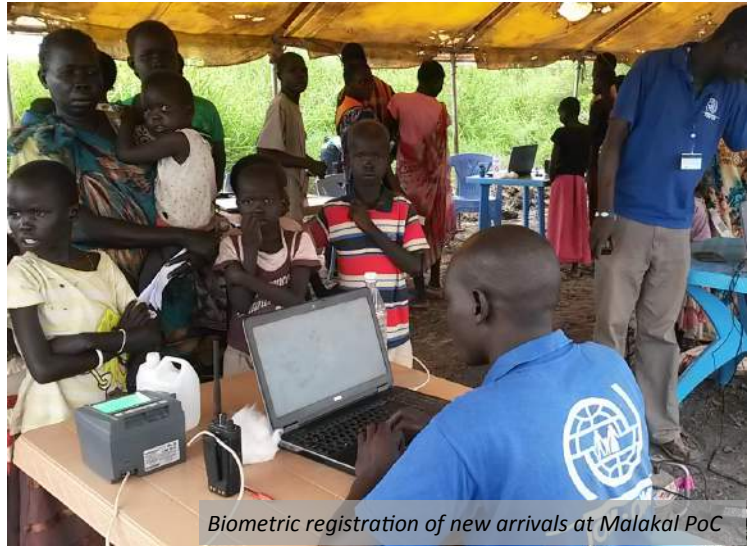
*\*This figure represents the number of internally displaced persons (IDPs) biometrically or temporarily registered. Renewed violence in Greater Upper Nile—Jonglei, Unity and Upper Nile states—continues to prompt day-to-day changes in displacement figures.*



## CAMP COORDINATION AND CAMP MANAGEMENT (CCCM)

As part of the global cluster system, the CCCM Cluster facilitates the delivery of life-saving services to IDPs in displacement sites throughout South Sudan. IOM and the UN High Commissioner for Refugees co-lead the CCCM Cluster, in coordination with the Agency for Technical Cooperation and Development. IOM serves as the CCCM State Focal Point in Jonglei, Upper Nile, Warrap and Western Bahr el Ghazal states.

IOM, in collaboration with UNMISS, manages humanitarian hubs at the PoC sites in Bentiu, Bor and Malakal to provide safe accommodation and office space for humanitarian agencies, supporting approximately 500 relief staff.



Biometric registration of new arrivals at Malakal PoC

### POC DEVELOPMENT, EXPANSION AND IMPROVEMENT

IOM is leading efforts to expand the PoC sites in Bentiu and Malakal to improve living conditions and increase IDP access to humanitarian services. In response to the influx of IDPs at both sites, IOM is working with camp management and UNMISS to develop contingency areas to shelter new arrivals.

UN PoC Biometric/Temporary Registration Data as of 24 August	IDPs
UN House Juba PoCs 1, 2 & 3	28,568
Bor PoC	2,289
Malakal PoC	45,423*
Bentiu PoC	114,277**
Melut PoC	931
Wau PoC	202
<b>Total</b>	<b>191,690</b>

\*Sum of biometric and temporary registration figures.

### DISPLACEMENT, TRACKING AND MONITORING (DTM)

IOM's DTM teams conduct biometric registration at IDP sites across the country in order to reduce duplication errors and provide baseline information for humanitarian response planning.

The influx of IDPs into the Malakal PoC since the beginning of August has decreased significantly in recent weeks, with only two new arrivals from Upper Nile's Panyikang County recorded on 21 August. However, new arrivals are expected to increase in the coming months due to food and physical insecurity.

IOM continues to record new arrivals at the Bentiu PoC site, with more than 3,200 IDPs from surrounding areas of Unity arriving during the week of 17 August. New arrivals cite food needs and insecurity as the main reason for seeking shelter at the site.

For further information on displacement data and trends in South Sudan, please refer to the DTM website at <http://www.iomsouthsudan.org/tracking/index.php>.



## COMMON-TRANSPORT SERVICE (CTS)

The IOM-operated CTS is a free-for-user service for transporting humanitarian supplies in South Sudan to help partners deliver assistance to vulnerable populations. During the reporting period, CTS trucks delivered more than 227 metric tons (MT) of commodities to Bentiu, Bor, Malakal and Rumbek, Lakes State, for onward distribution.







## SHELTER AND NON-FOOD ITEMS (NFI)

As co-lead of the Shelter and NFI Cluster in South Sudan, IOM provides emergency shelter materials and essential household items to vulnerable households. IOM also manages the Shelter and NFI Core Pipeline, which ensures that key relief items and emergency shelter materials are pre-positioned in strategic locations and ready to be deployed rapidly.

Since December 2013, IOM shelter/NFI teams have participated in more than 54 emergency distributions and 36 assessment missions across the country.

The Shelter and NFI Cluster continues to work closely with partners to support the increasing IDP population at the Bentiu and Malakal PoC sites and prepare for possible influxes in the coming months.

IOM is providing shelter materials at the Malakal PoC to house new arrivals in communal shelters. IOM continues to pre-position relief items, including kitchen sets and sleeping mats, at the site.

To support shelter needs of new arrivals at the Bentiu PoC, IOM teams are dispatching shelter materials to the site, delivering nearly 5,000 bundles of bamboo to date.



Shelter materials provide cover for IDPs at the Malakal PoC. IOM/Bannon 2015

## SURVIVAL KIT OPERATION

IOM is working with partners to implement an emergency airlift operation to provide lifesaving assistance to IDPs in hard-to-reach areas of Greater Upper Nile, civilians remain cut-off from humanitarian aid due to insecurity and access constraints.

To date, relief agencies have delivered approximately 8,500 survival kits to vulnerable populations. The lightweight, portable kits include mosquito nets, short-maturity vegetable seeds, fishing supplies, water carrying containers, water purification tablets, oral rehydration salts, nutritional biscuits for children and kitchen sets with cups, spoons, pots and plates.



World Vision delivers survival kits in Fashoda County, Upper Nile. IOM/Bannon 2015

### IOM Shelter/NFI Support Since December 2013



**72,400** Households Supported with relief items

**6,013** Households Supported with Shelter Materials



**7,111 MT** Shelter/relief items delivered through core pipeline—94% through the Cluster



## WATER, SANITATION AND HYGIENE (WASH)

As WASH Cluster State Focal Point in Upper Nile, IOM coordinates WASH responses for the state. IOM also supplies partners with WASH commodities through the IOM pipeline.

IOM is currently implementing critical WASH activities at the Bentiu and Malakal PoC sites. Due to insecurity, IOM has temporarily handed over WASH operations for the Melut PoC to World Vision staff on the ground until IOM teams can access the site.

IOM is taking every effort to provide new arrivals with access to safe drinking water and sanitation facilities at the Malakal PoC. On average, IDPs are receiving 11.9 liters of clean, treated water each day. IOM hygiene promoters are scaling up efforts to reach new arrivals in the contingency area, conducting house-to-house visits and encouraging good hygiene habits.

IOM WASH teams are providing safe drinking water to at least 49,200 IDPs at the Bentiu PoC through water points across the site. To maintain good sanitation conditions during the raining season, IOM continues to supervise latrine cleaning and garbage collection activities, construct showers and coordinate desludging of latrines.



## RAPID RESPONSE FUND (RRF)

With funding from the USAID Office of U.S. Foreign Disaster Assistance, IOM manages the RRF to support relief agencies across the country to swiftly implement specific emergency interventions. The RRF currently covers four states in South Sudan with the support of seven partner organizations and IOM direct-implementation projects.

From 13–16 August, IOM and partners conducted the first of a two-round OCV campaign at the Malakal PoC site with support from the RRF and the Government of Japan. More than 37,700 people were vaccinated, and IOM plans to commence the second round in the coming week.



RRF partners—including Action Against Hunger (ACF), Impact Health Organization (IMO) and Polish Humanitarian Action—remain actively involved in the cholera response in Juba and Bor counties, where 1,668 and 130 suspected cholera cases, respectively, had been reported as of 27 August.

With RRF support, ACF provides nutrition support to vulnerable communities in Fangkak County, Jonglei. ACF teams screen children for malnutrition and admit children into therapeutic feeding programs as necessary. In addition, ACF-trained community nutrition volunteers promote good maternal and child health and nutrition habits.





## HEALTH

IOM is providing primary health care assistance in the Malakal and Bentiu PoC sites and clinical assistance to IDPs, returnees and host communities in Renk County, Upper Nile. IOM also operates mobile health services in the South Sudan–Sudan border area of Wonthou (Joda).

From 17 to 23 August, malaria, upper and lower respiratory tract infections and acute watery diarrhea were the top medical conditions



Women celebrate World Breastfeeding Week at the Malakal PoC

at IOM static clinics in Bentiu, Malakal and Renk.

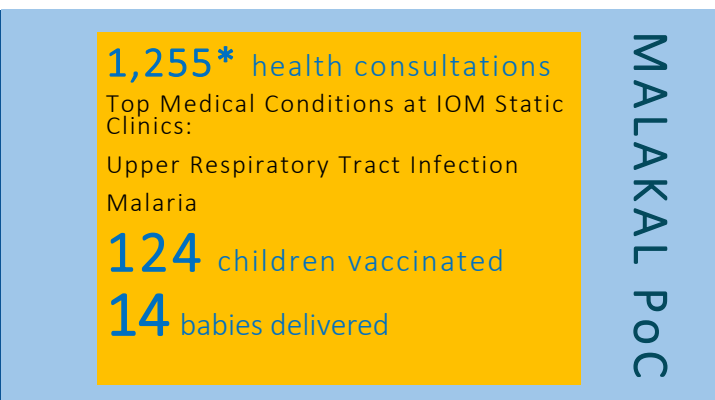
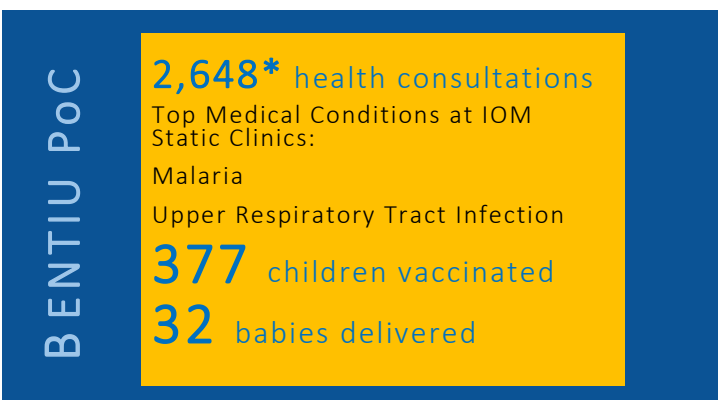
The IOM clinic in Bentiu continues to receive an increased number of suspected malaria cases during the rainy season.

On 15 August, IOM health staff in Malakal PoC convened a celebration with more than 900 IDPs to spread the message on the importance of maternal health and the benefits of breastfeeding infants until six months of age.

In addition to leading the cholera vaccination campaign in Malakal, IOM continues to provide health support at the Government-run Cholera Treatment Centre at the Juba teaching hospital, which continues to receive the largest proportion of suspected cholera cases.



IOM staff prepare prescriptions at the pharmacy in the Bentiu PoC health clinic



\*Statistics reflect the period from 17 – 23 August



## PROTECTION

IOM South Sudan's mobile Psychosocial Support (PSS) team works closely with IDPs at the Bor PoC site to offer counselling, convene community discussions and engage IDPs in communal activities to address protection concerns. IOM is undertaking preparations to begin a PSS program at the Bentiu PoC.

PSS youth programmes provide an opportunity for youth to both engage positivity with their community and increase dialogue between the younger and older generations. With IOM support, IDPs of all ages celebrated Youth Day on 12 August with sports, cultural and educational activities.

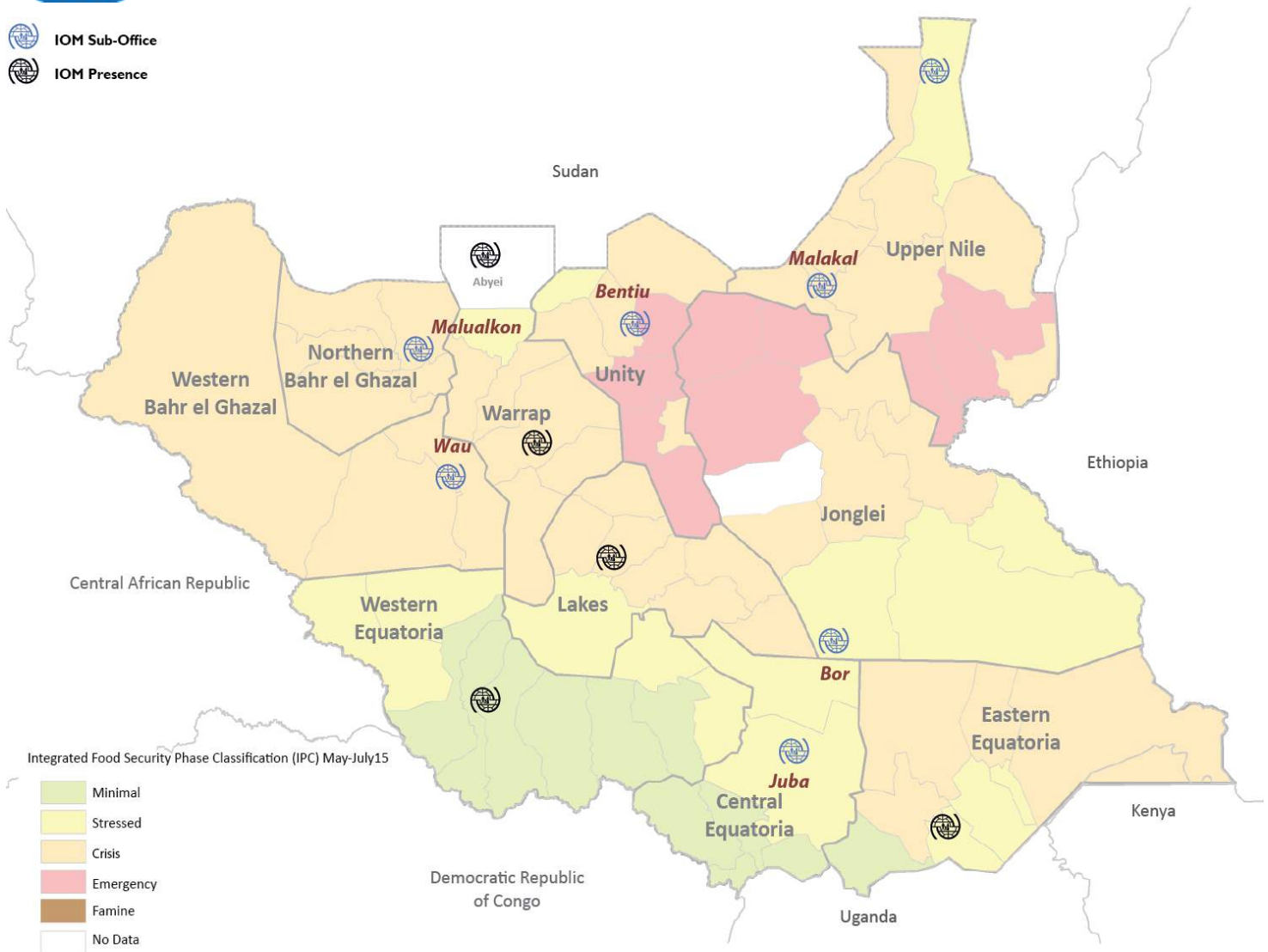


IDPs celebrate Youth Day at the Bor PoC



# IOM OFFICES AND PRESENCE IN SOUTH SUDAN

- IOM Sub-Office
- IOM Presence



Funding for IOM South Sudan's emergency operation is provided by



**From the People of Japan**



United Nations  
**CENTRAL EMERGENCY RESPONSE FUND**









EUROPEAN COMMISSION  
**Humanitarian Aid**



**UKaid**  
from the British people



Kingdom of the Netherlands



**USAID**  
FROM THE AMERICAN PEOPLE



**Canada**



**CHF**



The Common Humanitarian Fund