

May 7–14, 2015

HUMANITARIAN UPDATE #46

HIGHLIGHTS

IOM completes biometric registration at Malakal PoC site in Upper Nile State

IOM health RRT provides health care services in Mogok, Ayod County, Jonglei State

Conflict in Unity State hinders humanitarian response for more than 300,000 people



IOM staff help IDPs deconstruct shelter and move luggage for transport from PoC II to PoC III at UN House in Juba

Since the December 2013 outbreak of violence, more than 2 million South Sudanese have fled their homes, including more than 546,200 people who left the country and crossed into Ethiopia, Kenya, Sudan and Uganda. Approximately 1.5 million people remain internally displaced, including many seeking shelter in remote rural areas and more than 145,000 internally displaced persons (IDPs) sheltering in protection of civilian sites (PoCs) in UN Mission in the Republic of South Sudan (UNMISS) bases across South Sudan. Displacement patterns remain fluid, driven by violence, access to emergency assistance and seasonality.

An estimated 2.5 million people were food insecure from January–March 2015, according to the IPC Technical Working Group. The peace process remains stalled and the value of the South Sudanese Pound continues to decrease. Humanitarian organizations remain concerned that continued tensions, coupled with economic insecurity, could lead to an increase in criminality and conflict.

Unpredictable security conditions continue across the country. In Unity State, increased violence, including targeting of civilians, in recent weeks has left more than 300,000 people in parts of Unity—including Guit, Koch and Leer counties—without access to humanitarian assistance,

according to the UN. Hostilities have forced relief agencies, including IOM partners, to evacuate staff from Leer and other locations in the state. The Camp Coordination and Camp Management Cluster (CCCM) is responding to an influx of new IDP arrivals at the Bentiu PoC site in Unity.

Despite insecurity and other response challenges, IOM response teams remain on the ground in conflict-affected areas across the country and engaged to provide assistance to displaced and conflict-affected populations.

IOM's Rapid Response Teams (RRTs) continue to provide mobile response in challenging operating environments. To date, the mechanism has reached more than 215,000 displaced and conflict-affected persons in remote areas throughout the country. A health RRT is on the ground in Mogok, Ayod County, Jonglei State, to provide critical health care assistance, as well as nutrition screening and referrals.

IOM, in coordination with UNMISS and humanitarian partners, continues efforts to improve PoC sites across the country. IOM is leading expansion projects at the Bentiu PoC and the PoC in Malakal town, Upper Nile State, in advance of the rainy season to mitigate potential flooding and provide enhanced humanitarian services to IDPs.



CAMP COORDINATION AND CAMP MANAGEMENT (CCCM)

The CCCM Cluster facilitates the delivery of life-saving services to IDPs in displacement sites throughout South Sudan by ensuring that basic humanitarian living conditions are provided and building the foundations for voluntary return and recovery interventions, where it is possible and safe to do so. IOM and the UN High Commissioner for Refugees (UNHCR) co-lead the CCCM Cluster, in coordination with the Agency for Technical Cooperation and Development (ACTED). IOM continues to act as CCCM State Focal Point in Upper Nile, Jonglei, Western Bahr el Ghazal and Warrap states.



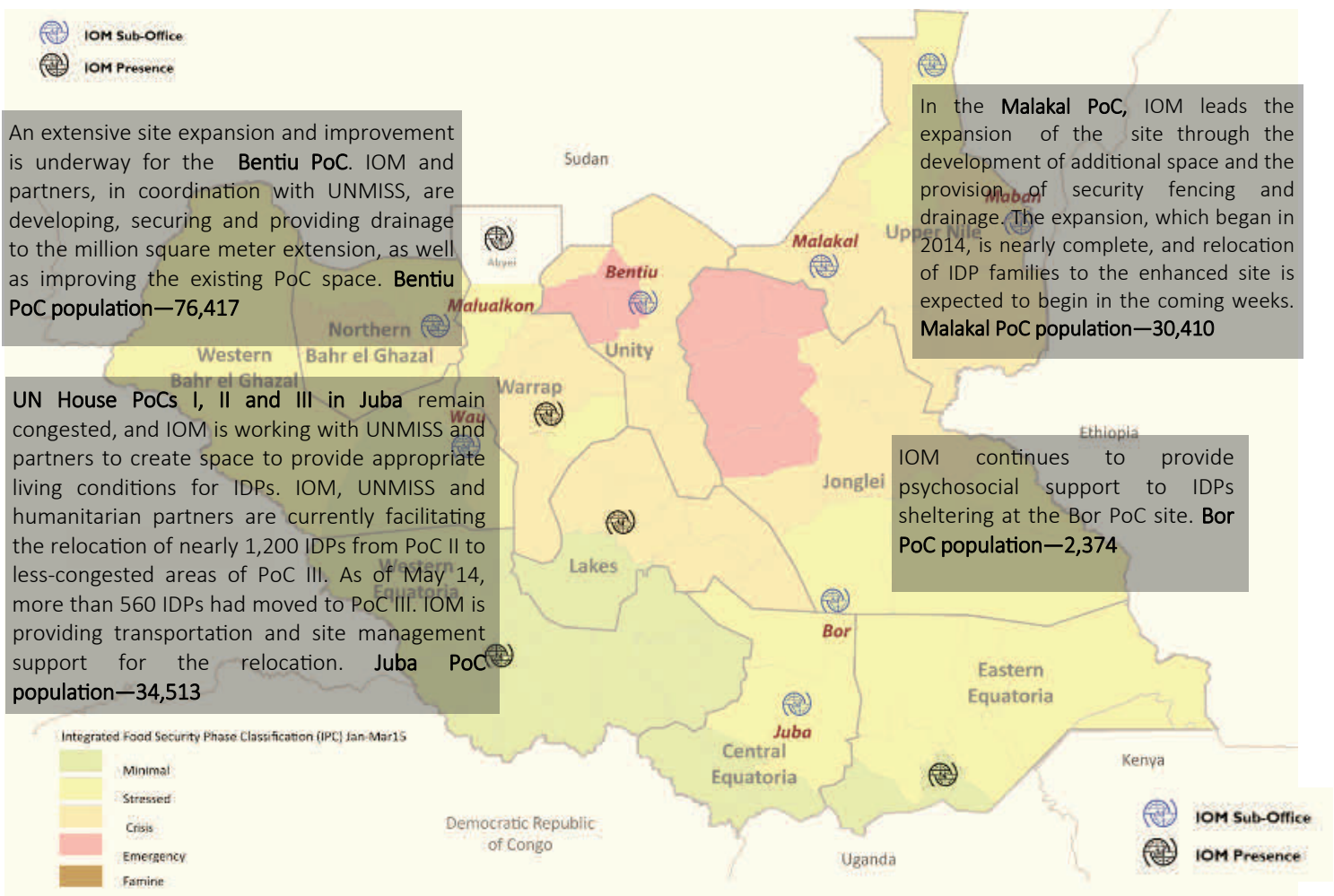
IOM constructs retention basin to prevent flooding at Bentiu PoC expansion site during the rainy season

DURABLE SOLUTIONS FOR IDPs

The CCCM Cluster and IOM continue to analyze the situation in PoC and IDP sites throughout the country. Through assessments and the Displacement Tracking Matrix (DTM), IOM and humanitarian partners continue to explore potential safe return options for IDPs.


POC DEVELOPMENT, EXPANSION AND IMPROVEMENT

Efforts to increase capacity and improve living conditions continue at PoC sites in Malakal; Bor, Jonglei; Bentiu; and UN House in Juba, Central Equatoria State. Please see the map below for site specific information.





HUMANITARIAN HUBS

The CCCM Cluster has established humanitarian hubs at key displacement locations throughout the country. IOM, in collaboration with UNMISS, manages the hubs within the UNMISS compound in Bentiu, Malakal, and Bor. As part of the Malakal expansion, IOM is currently constructing external fencing around the humanitarian hub. In addition, drainage inspections are underway to ensure proper drainage at the Hub during the rainy season. Work continued to improve conditions of the Bentiu hub, including constructing pathways between structures, completing a security bunker for humanitarian staff, and replacing temporary structures with more durable structures.



COMMON TRANSPORT SERVICE

The IOM-operated Common Transport Service (CTS), a free -for-user service for transporting humanitarian supplies in South Sudan, is helping partners to deliver critical assistance to vulnerable populations. CTS trucks remain strategically positioned across the country to provide transport assistance to humanitarian

 <p>836 MT Malakal</p>	<p>Last week more than 908.7 MT of cargo were delivered, with Malakal and Rumbek receiving the largest deliveries.</p>	 <p>41 MT Rumbek</p>
---	---	---

DISPLACEMENT TRACKING MATRIX To gather better information on displaced individuals residing in UN PoC sites, IOM's DTM team has conducted registration since January 2014 and began biometric registration of IDPs in June 2014. Biometric registration reduces duplication errors commonly found in normal registration exercises and provides a baseline to inform humanitarian response planning and service provision.

DTM teams conducted a biometric registration at the **Malakal PoC May 7–11** following an influx of IDPs to the site due to fighting in late April and early May. The exercise biometrically registered **30,410 IDPs**.



IOM-operated CTS truck delivers relief supplies



SHELTER AND NON-FOOD ITEMS (NFI)

As lead of the Shelter and NFI Cluster in South Sudan, IOM provides emergency shelter materials and essential household items to conflict-affected and displaced populations. IOM also manages the Shelter and NFI Core Pipeline, a mechanism that ensures that key NFIs and emergency shelter materials are pre-positioned in strategic locations and ready to be deployed rapidly.

Since the crisis began, **6,528 metric tons (MT) of shelter and NFI stock** have been moved through the core pipeline; through the Shelter and NFI Cluster, IOM has transported approximately 94 per cent of these stocks.

IOM FRONTLINE SHELTER/NFI RESPONSE

Since the start of the crisis, IOM's Shelter/NFI frontline response team has distributed NFI items to nearly **66,800 households** and shelter materials to more than **3,950 households**. IOM shelter/NFI team members continue to work with national non-governmental organization partner Lacha Community and Economic Development (LCED) to distribute shelter reinforcement kits for IDPs at UN House PoC I and PoC II, with support from the IOM-managed, USAID Office of U.S. Foreign Disaster Assistance-funded Rapid Response Fund.



WATER, SANITATION AND HYGIENE (WASH)

WASH Cluster State Focal Point

IOM is the WASH Cluster State Focal Point in Upper Nile, where IOM continues to lead the coordination of WASH response for the state. IOM continues to pre-position WASH supplies in advance of the rainy season and coordinate contingency plans for the WASH response in Upper Nile.

IOM continues to work with WASH and CCCM partners to establish WASH services in the Malakal PoC extension area.



IOM promotes good hand washing with children at the Dethoma II IDP settlement in Melut County, Upper Nile.

IOM WASH EMERGENCY OPERATIONS

Malakal PoC



10 Liters of safe water available per person per day



56 persons per latrine

652 people per hygiene promoter



The WASH team in the Malakal PoC continues to monitor water quality and consumption rates.

Latrine and bathing facility construction continued in the new PoC extension site. 12 blocks of latrines facilities were completed during the reporting week.

Preparation for the relocation movement of IDPs to the new PoC extension is ongoing.

A hygiene promotion committee was formed in PoC 3. Soap and food distributions for the entire site are ongoing.

Bentiu PoC



7.6 Liters of safe water available per person per day



207 persons per latrine

563 people per hygiene promoter



IOM continues to provide WASH services to IDPs residing in PoC 4.

IOM hygiene promotion activities benefited nearly 5,000 IDPs. Topics included safe drinking water; cholera awareness; food and personal hygiene; Hepatitis E awareness; and waste management.

The WASH team in Bentiu is actively involved in the PoC site extension, through the network design, recommendations to partners, and placement and access to drainage and boreholes.

Melut



12.9 Liters of safe water available per person per day



55 persons per latrine



475 people per hygiene promoter

Hygiene promotion activities highlighting prevention of HIV/AIDS have reached nearly 18,700 people.

Construction of family latrines is underway across the Melut. Hai Soma, Dethoma I and Dethoma IDP sites.

Construction remained ongoing for 14 latrines in Dethoma I and 25 latrines in Dethoma II.



HEALTH

IOM is providing primary health care assistance in the Malakal and Bentiu PoCs and clinical assistance to IDPs, returnees and host communities across other parts of South Sudan. IOM operates mobile health services in the South Sudan–Sudan border area of Wonthou (Joda).

IOM clinics provide curative consultations, health education sessions, routine immunization for children under five and maternal health care. During the reporting period, upper respiratory tract infections and malaria were the top medical conditions at IOM static clinics in Malakal, Bentiu and Renk.

IOM’s health RRT returned to Mogok, Ayod County, Jonglei, on May 5. During the coming weeks, the team will provide general health consultations for children; reproductive health care assistance; facility based deliveries and antenatal and postnatal care support; nutrition screenings and referrals; and training of community health care works and traditional birth attendants.

BENTIU POC

774* health consultations

Top Medical Conditions at IOM Static Clinics:

Upper Respiratory Tract Infection

Malaria

376 children vaccinated

19 babies delivered

The IOM Bentiu health team continued with their regular activities, which include vaccinating children against childhood diseases and antenatal care consultations.

816* health consultations

Top Medical Conditions at IOM Static Clinics:

Upper Respiratory Tract Infection

Malaria

172 children vaccinated

8 babies delivered

MALAKAL POC

The IOM Health team in Malakal continued with their regular activities, including health promotion, reproductive health services, nutrition screening, vaccinations, and testing.

*Statistics reflect only the period from May 4–11



PROTECTION

IOM South Sudan’s mobile Psychosocial Support (PSS) team continues to work with IDPs at the Bor PoC site to offer counselling, convene community discussions and engage IDPs in other activities to address protection concerns. During the reporting week, the PSS team provided individual counselling to two IDPs experiencing acute stress and coordinated with child protection actors to ensure protection of the IDPs’ children. The team convened a widows support group on May 6 and provided support to IDPs who had recently lost relatives. Also during the reporting week, the PSS mediation group organized a community meeting to discuss issues fuelling conflict within the PoC site. The group discussion highlighted key issues and the need to address sensitive topics in an appropriate manner, incorporating protection concerns. IOM organized a reflection group at the PoC in order for IDPs to share their experiences with the PSS program and enable IOM to incorporate IDP voices into public presentations regarding IOM’s PSS work in Bor.

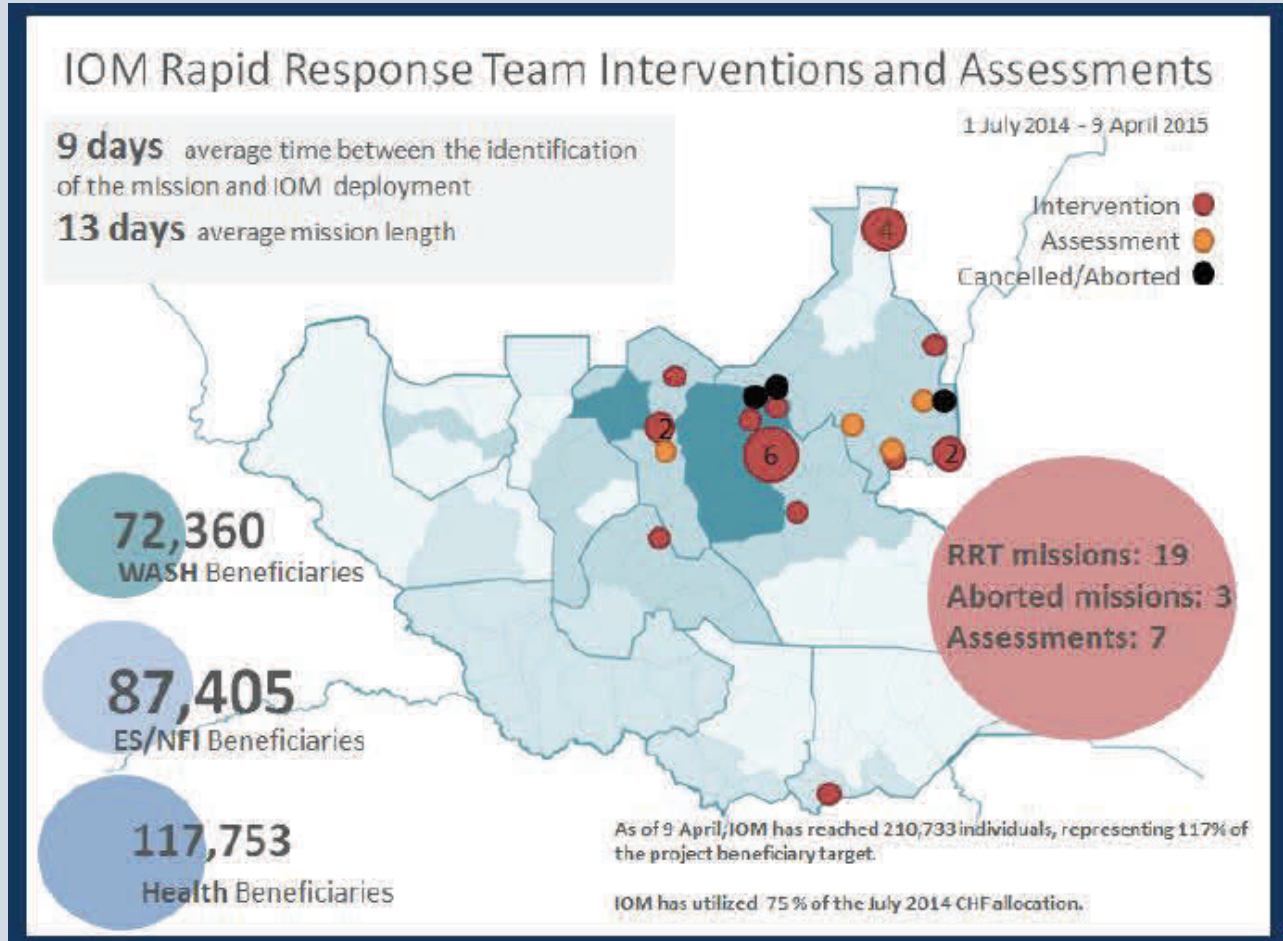


Football, a metaphor for life: Youth explore and reflect on their lives in the Bor PoC during a IOM PSS reflection group session



RAPID RESPONSE TEAM (RRT)

IOM's RRT is part of the humanitarian community's efforts to establish a response mechanism to improve the delivery of humanitarian assistance in hard-to-reach areas. IOM's RRT is multi-sectoral, composed of experts in the sectors of Health, Shelter/NFI and WASH. RRTs can be deployed to respond in several locations simultaneously based on the needs identified through assessments and prioritization through the Operations Working Group (OWG).



Funding for IOM South Sudan's emergency operation is provided by



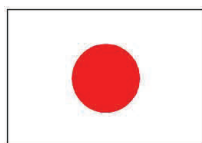
The Common Humanitarian Fund

Canada

EUROPEAN COMMISSION



Humanitarian Aid



Kingdom of the Netherlands



USAID FROM THE AMERICAN PEOPLE

