



# PAPUA NEW GUINEA DROUGHT IOM PREPAREDNESS AND RESPONSE

SITUATION REPORT • 1 November 2015



## Highlights

IOM delivers Shelter and NFI kits to a remote village in Simbu Province affected by drought-induced fires © IOM 2015 (Photo: George Gigauri)

■ IOM opens its Field Office in Wabag, Enga Province and initiates emergency and disaster management operations, focusing on food security, WASH, tribal conflict mitigation and sorcery-induced displacement .

■ IOM distributes shelter and non-food items kits to 111 people in Simbu Province, affected by drought-induced bush fires in Simbu Province.

■ IOM begins to preposition WASH and NFIs in Simbu and Enga Provinces in preparation for targeting and distribution to most affected communities.

## Situation Overview

The prolonged deficit in precipitation and incidences of frost in areas of high altitude, as a result of the current El Nino weather pattern persists in PNG, affecting food production and the availability of water. Consequently, the education of school aged students in the affected areas is suffering, as well as the health and nutrition status of the most vulnerable communities. The National Disaster Centre (NDC) estimate of 2.4 million affected people stands unchanged and deaths relating to diseases and starvation have been reported by the Provincial Disaster Centres (PDCs) and other partners. The progression of vulnerability remains fluid as areas that were previously unaffected by water shortage are now experiencing the effects first-hand with even the most rudimentary traditional water collection methods now facing increasing stresses. As the drought continues, the socio-economic impact is becoming ever more far reaching. The supply of electricity is decreasing, particularly the Yonki dam which will likely impact seven provinces (Eastern Highlands, Enga, Simbu, Southern Highlands, Western Highlands, Madang and Morobe). The NDC has acknowledged that food distribution and access to water are priorities for areas in categorized as drought categories 4-5. To date, the NDC has delivered over 2,475 tons of food supplies to over 200,000 households in the most vulnerable 10 provinces. In coordination with the national government, churches and provincial administrations have utilized their own funds to procure and supply food in the affected provinces. With a recently established presence in the affected provinces of Enga, Simbu and Jiwaka, IOM, operating as part of a joint UN effort, is collaborating and coordinating closely with the PDCs, NDC and the Shelter, CCCM and NFIs and WASH Clusters to ensure that WASH, NFI distribution and Early Recovery needs are met in a targeted and timely manner to alleviate the effects of the drought and frost.

## CONTACTS

IOM Papua New Guinea  
Disaster Management Unit  
☎ +675.321.3655

✉ [drd@iom.int](mailto:drd@iom.int), [Donor Relations Division](mailto:Donor Relations Division), IOM HQs  
✉ [wsithole@iom.int](mailto:wsithole@iom.int), [bmunoz@iom.int](mailto:bmunoz@iom.int)  
🌐 <http://png.iom.int/>

## IOM RESPONSE

### Early Recovery



IOM Enga Field Office opening (pictured: US Ambassador, Enga Provincial Disaster Coordinator and IOM Chief of Mission (© IOM 2015)

IOM, in the presence of the US Ambassador (to PNG, Solomon Islands and Vanuatu), has officially opened its Field Office in Wabag, Enga Province on 29 October 2015. As part of the UN joint effort, IOM is beginning its field operations, related to drought and frost through early recovery, water sanitation and hygiene (WASH), disaster risk reduction (DRR), and tribal conflict mitigation activities, including: the drilling and rehabilitation of boreholes; identification of certified trainers for the role out of participatory health and hygiene education; distribution of WASH NFIs to the most vulnerable households; and in partnership with the National Agricultural Research Institute (NARI) IOM will distribute drought resistant seedlings to the most vulnerable households in parallel with the trainings of master farmers on conservation farming. IOM will also focus on facilitating durable solutions for tribal conflict and sorcery-related displacement, as an additional element.

### Shelter, CCCM and NFIs

In response to reports that 17 houses were burnt down due to the spread of a drought related bush fire, IOM with Simbu Province Officials travelled to the remote village of Omkogla on 31 October (2015). At the request of Simbu Provincial Administration and the National Disaster Centre, IOM distributed 17 Shelter NFI kits for 111 people, which included tarpaulins, hammers, nails, rope, bush knives, blankets and collapsible water containers amongst other essential non-food items. Following the distribution IOM conducted community outreach with the affected persons and wider community, delivering key messages of unity, social cohesion and the need for a common understanding that their plight is recognized by the government, humanitarian partners and the international community alike.

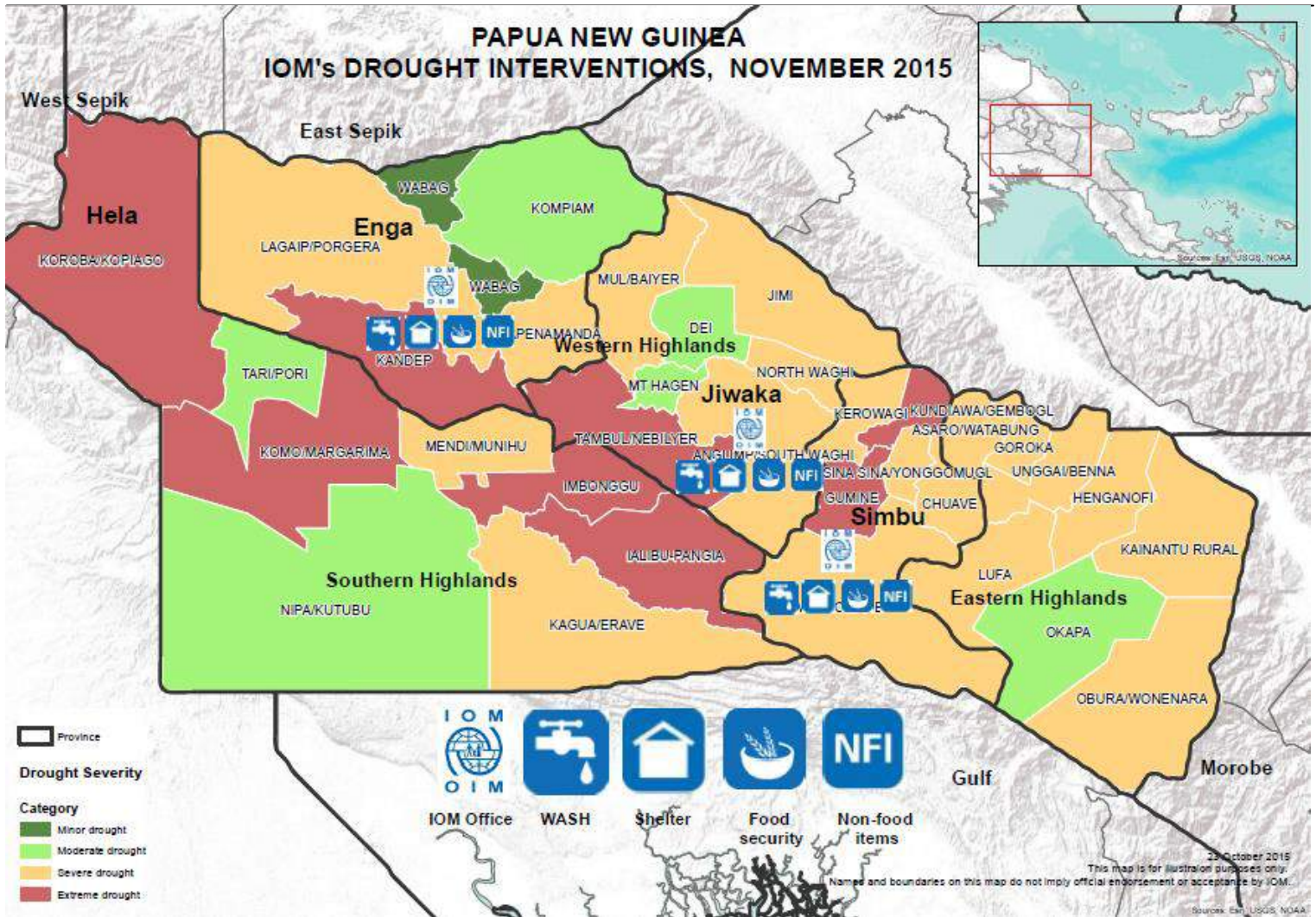
### Water, Sanitation and Hygiene

Sufficient water supply at health and education facilities continues to be a serious concern. The majority of health aid posts and schools in the Highlands are dependent upon rain catchment and the water tanks are reported to be either empty or at critically low levels, thus hindering the day-to-day running of the facilities. Health care workers, teachers and families collecting water from river sources are facing issues in regards to collection and safe storage. In light of these pressing needs, with USAID (OFDA) funding, IOM started prepositioning collapsible water containers and other key NFIs in Wabag (Enga Province) and Kundiawa (Simbu Province) Provincial Warehouses for subsequent targeting and distribution to the most vulnerable communities, in coordination with the WASH Cluster. Further to this, IOM plans to address the prevailing WASH concerns through the promotion of enhanced climate-resilient agriculture and water supply in the drought-affected communities.



IOM loading NFIs in Kundiawa (Simbu Province)  
© IOM 2015 (Photo: George Gigauri)

IOM continues to remain actively engaged in the Disaster Management Team meetings along with WASH, Health and inter-Cluster weekly meetings. Coordinating closely with the National Disaster Centre and humanitarian partners has proven pivotal in ensuring IOM's interventions are targeted in a timely manner, whilst avoiding duplications in service delivery. IOM is committed to promote coordination and harmonization between partners.



**IOM operations are supported by:**

