

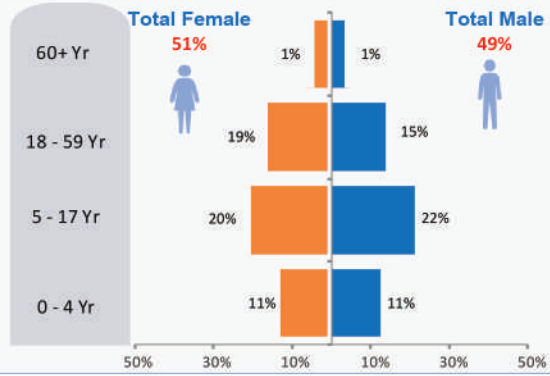
\* Overall returnees through **Torkham** since January 2017

**43,922**

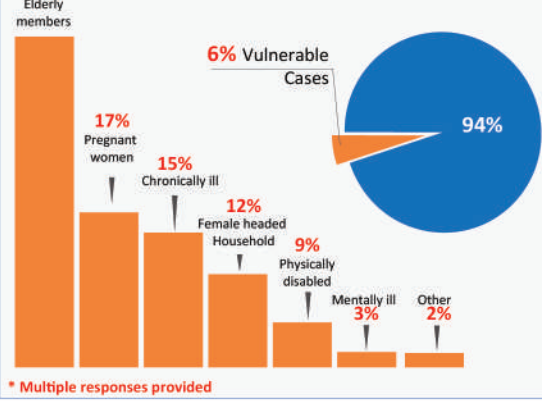


This reporting period **4,535**

## Age-Gender Disaggregation (Individuals)



## \* Vulnerable Cases Reported



## \* % of Households travelling with assets to Afghanistan



\* Multiple responses provided

Household Items or Personal Belonging **100%**

Productive Assets **71%**

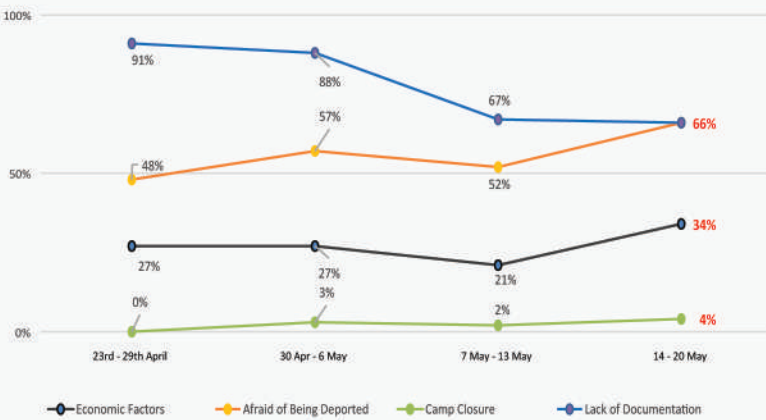
Families Carrying Cash **21%**

Livestock **6%**

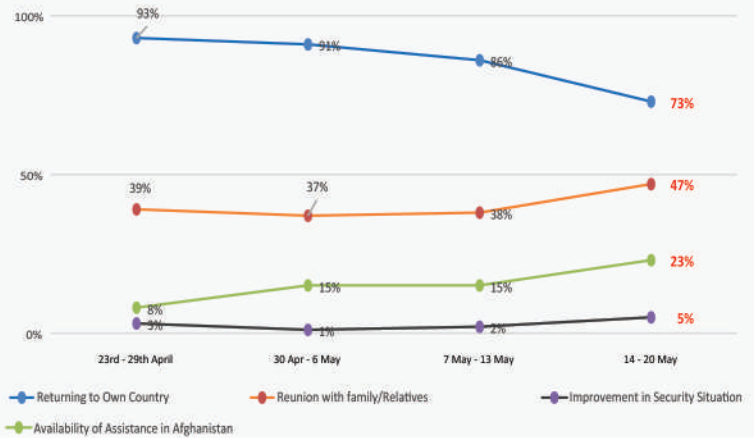
In **4%** cases families returned using multiple vehicles

**96%** of returnees used single vehicle

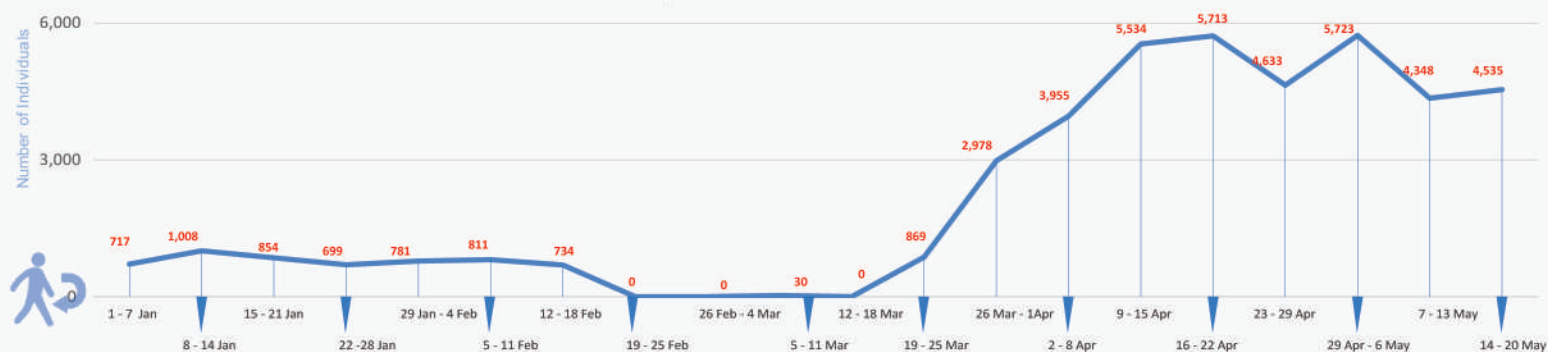
## Trend - PUSH Factors



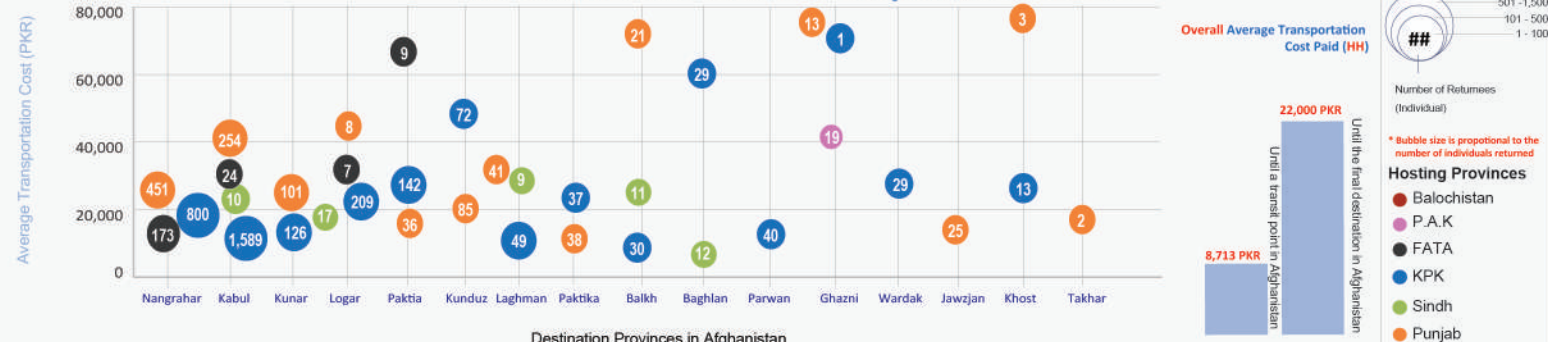
## Trend - PULL Factors

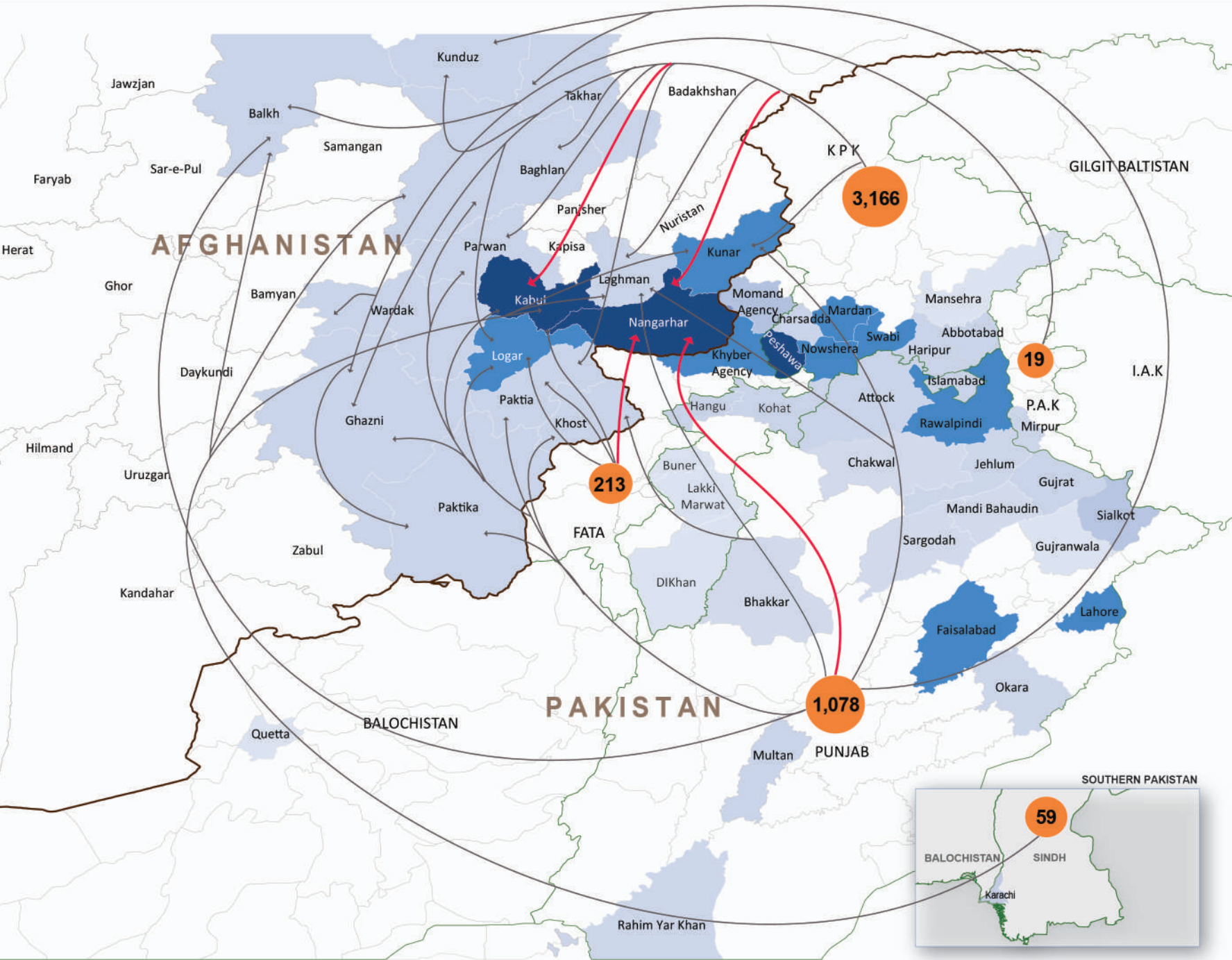


## Weekly Return Trend



## Movement Trends and Transportation Costs





### Legend

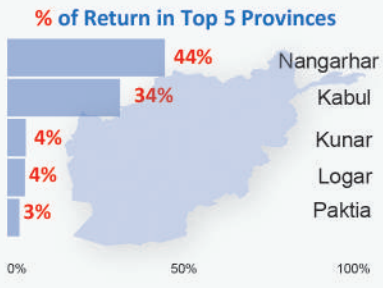
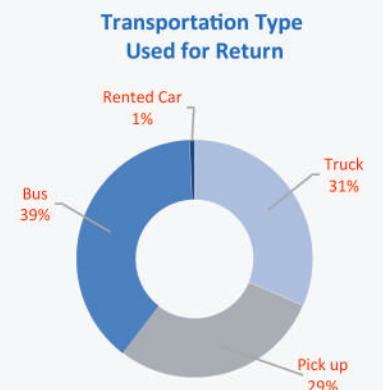
- ##** Number of individuals returning from Provinces of Pakistan
- Province
- District
- International Boundary

### Return Movements (Individuals)

- 1 - 100
- 101 - 1,000
- 1,001 - 3,000

### Concentration of Returnees

- 1 - 100
- 101 - 500
- 500 - 3,000



Presently, flow monitoring has only been established at the Torkham Border.