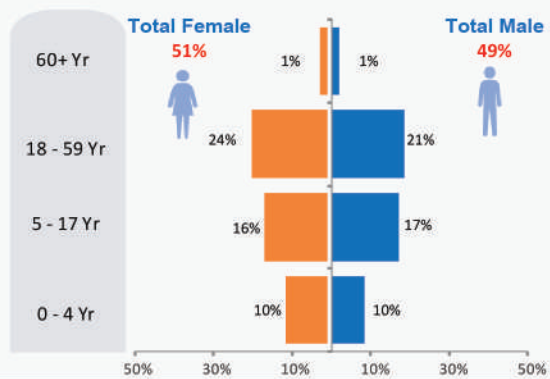


\* Overall returnees through **Torkham** and **Chaman/Spin Boldak** since January 2017 **92,772**

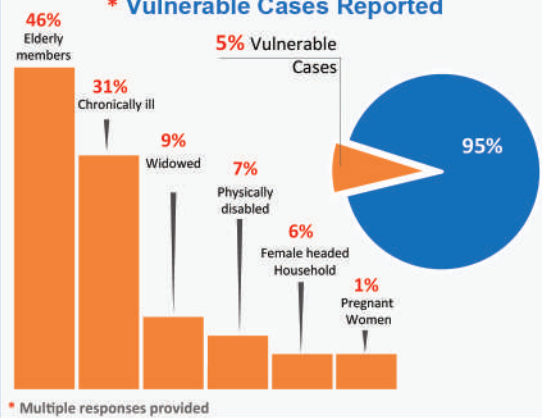


This reporting period **862**

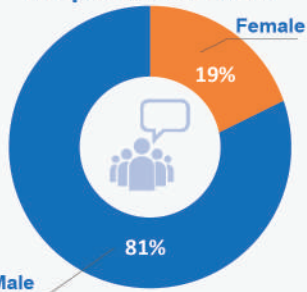
## Age-Gender Disaggregation (Individuals)



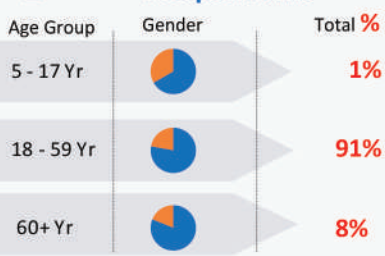
## \* Vulnerable Cases Reported



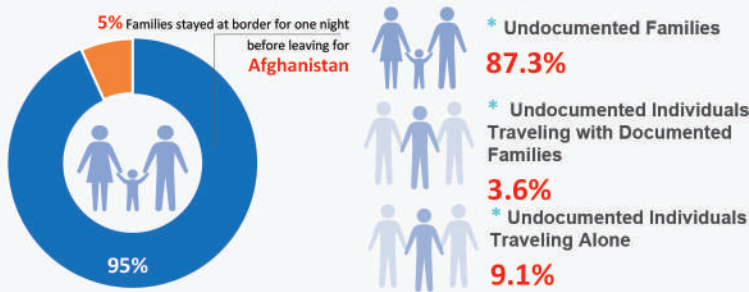
## Respondent Gender



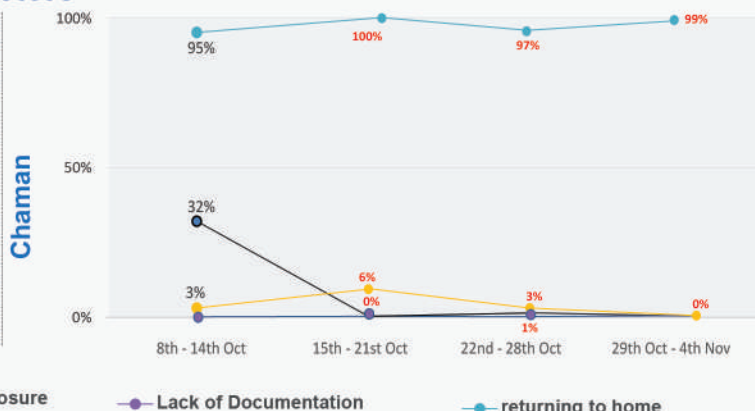
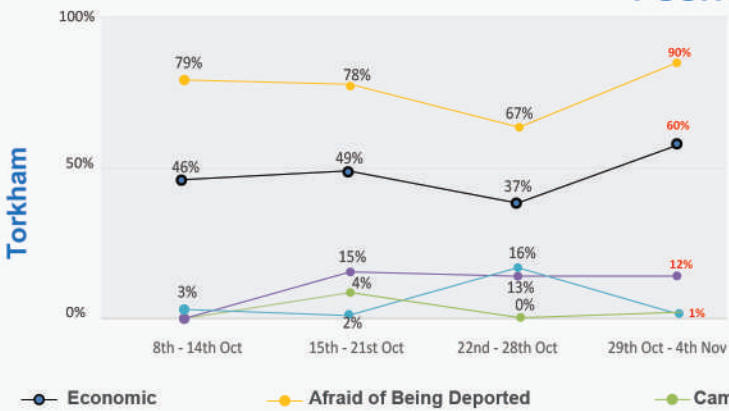
## Age Group of Respondents



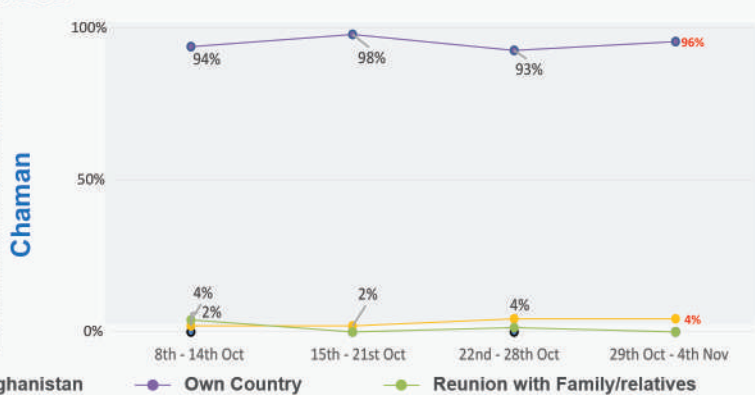
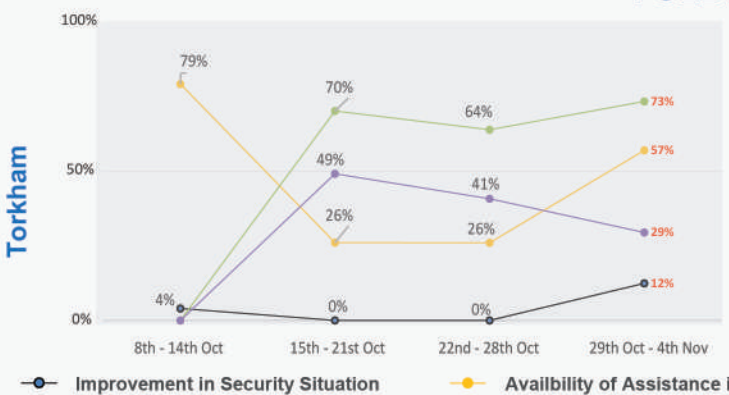
## 155 Families Crossed Border



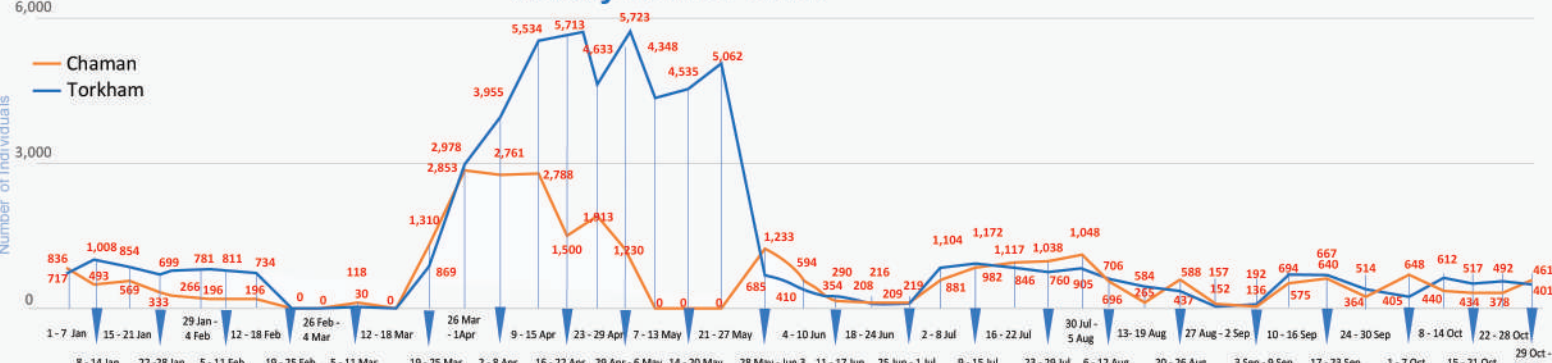
## PUSH Factors



## PULL Factors



## Weekly Return Trend

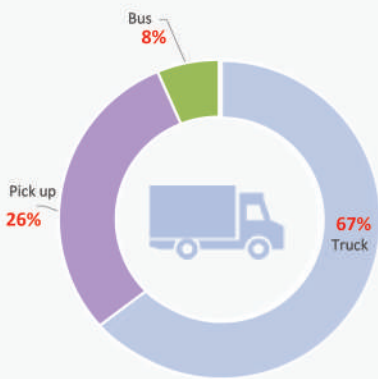




# Flow Monitoring - Spontaneous Returns of Undocumented Afghans from Pakistan

29th Oct - 4th Nov

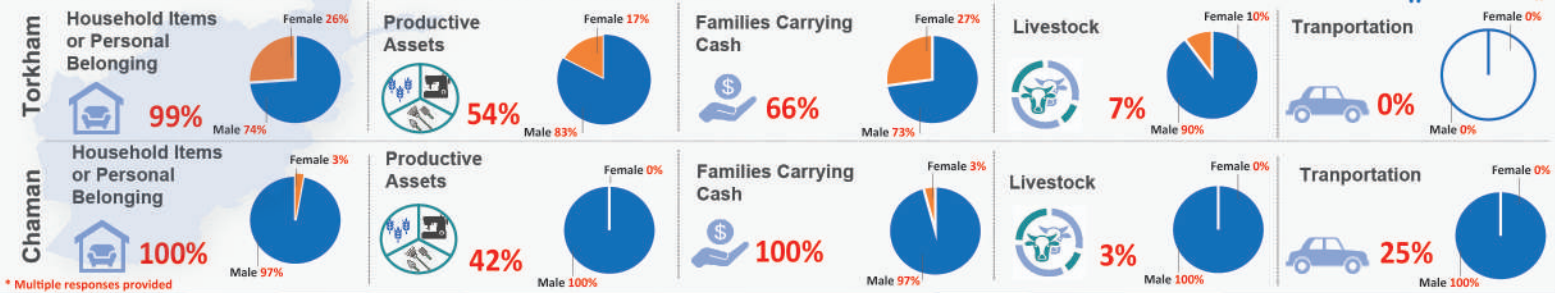
## 175 Vehicles crossed the border



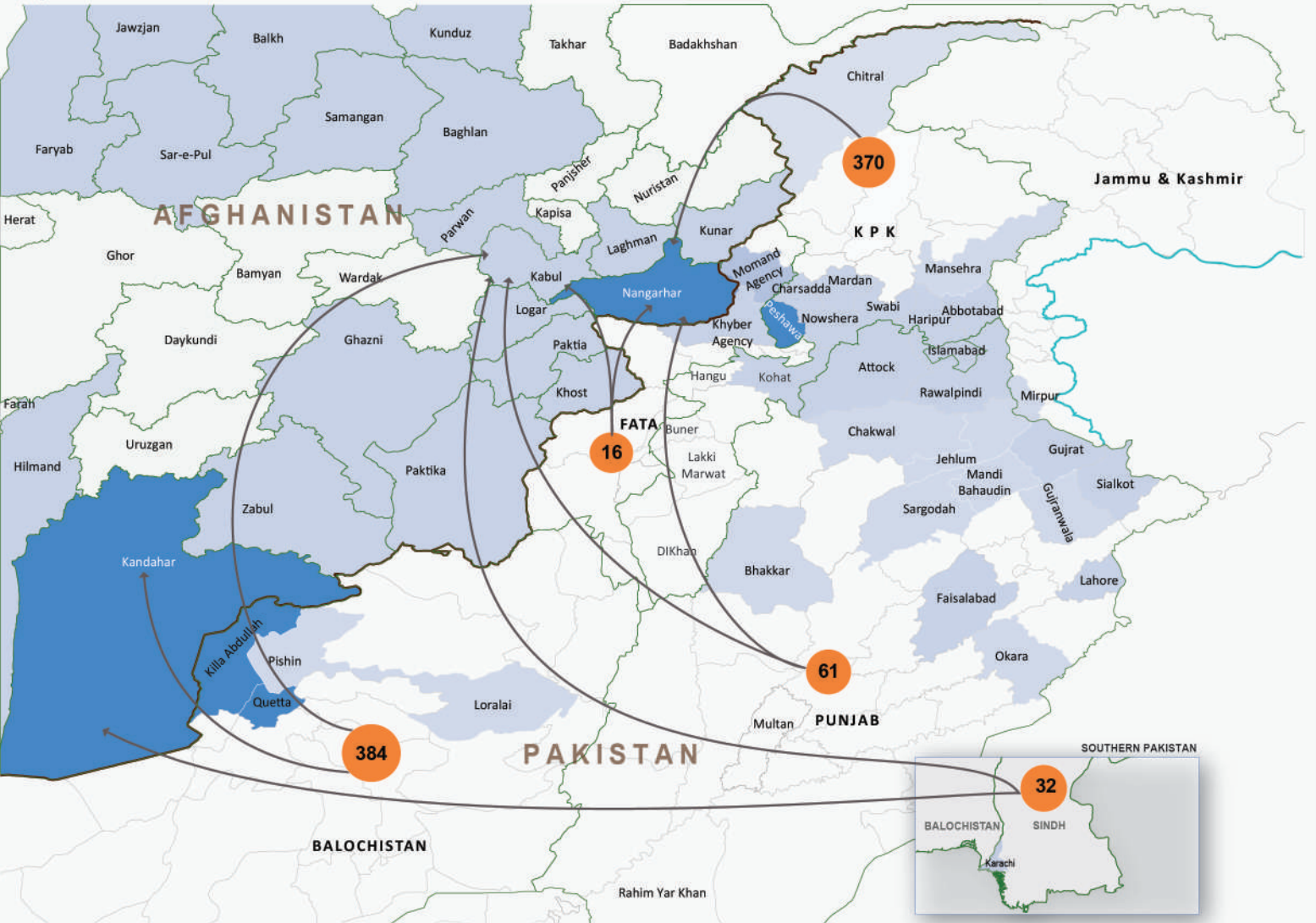
## Average Amount Paid by Vehicle Type

Vehicle Type	Location	Min	Max	Average
Truck	Chaman	4,000 PKR	100,000 PKR	On average 9 individuals used one Truck
	Torkham	5,500 PKR	100,000 PKR	
Bus	Chaman	1,500 PKR	50,000 PKR	On average 6 individuals used one Bus
	Torkham	15,000 PKR	50,000 PKR	
Pickup	Chaman	1,500 PKR	40,000 PKR	On average 8 individuals used one Pickup
	Torkham	3,500 PKR	100,000 PKR	
Rented Car	Chaman	500 PKR	68,000 PKR	On average 2 individuals used one car
	Torkham	35,000 PKR	70,000 PKR	

## \* % of Households travelling with assets to Afghanistan



## Population Movement Trend for Spontaneous Returns of Undocumented Afghans from Pakistan



**Legend**

- Province (Green outline)
- District (Grey outline)
- International Boundary (Red outline)
- Line of Control (Blue line)

**Return Movements to top 3 Provinces (Individuals)**

- 1 - 100 (Thin arrow)
- 101 - 1,000 (Medium arrow)
- 1,001 - 3,000 (Thick arrow)

**Concentration of Returnees**

- 1 - 100 (Lightest blue)
- 101 - 500 (Medium blue)
- 500 - 3,000 (Darkest blue)

**Data Source:** Population Census Organization, UNOCHA

**Disclaimers:** The designations employed and the presentation of material on this map do not imply the expression of any opinion whatsoever on the part of the Secretariat of the United Nations concerning the legal status of any country, territory, city or area or of its authorities, or concerning the delimitation of its frontiers or boundaries. The dotted line represents approximately the line of control between India and Pakistan. The final status of Jammu and Kashmir has not yet been agreed upon by the parties.