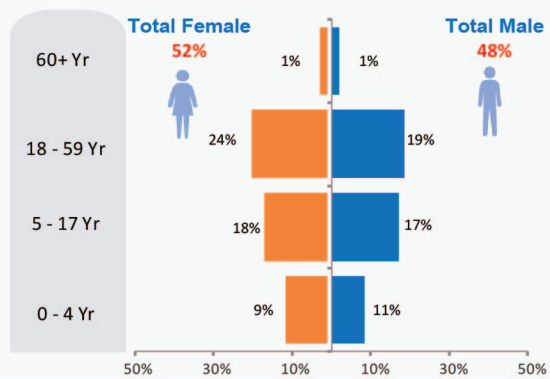


* Overall returnees through **Torkham** and **Chaman/Spin Boldak** since January 2017 **91,040**

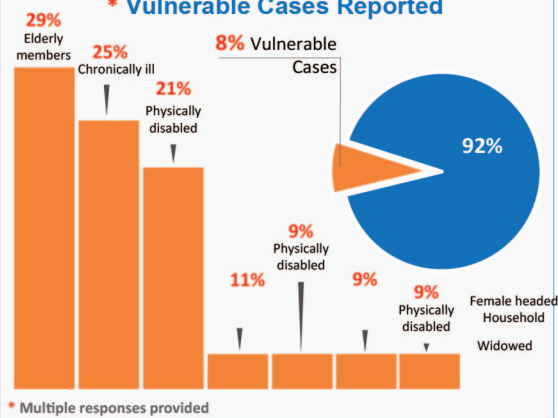


This reporting period **951**

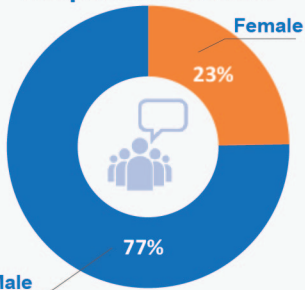
Age-Gender Disaggregation (Individuals)



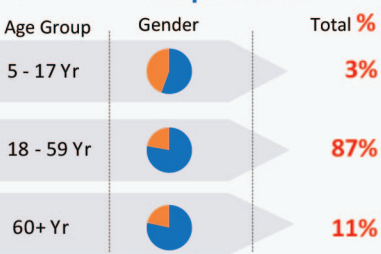
* Vulnerable Cases Reported



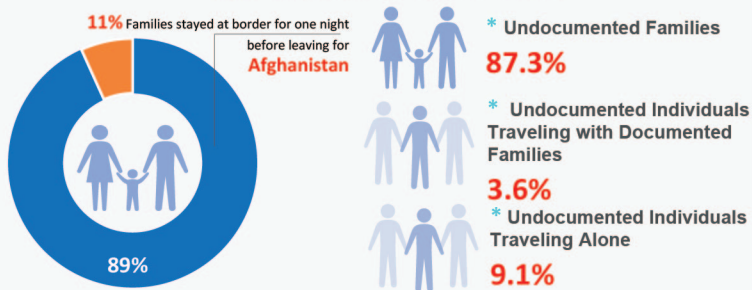
Respondent Gender



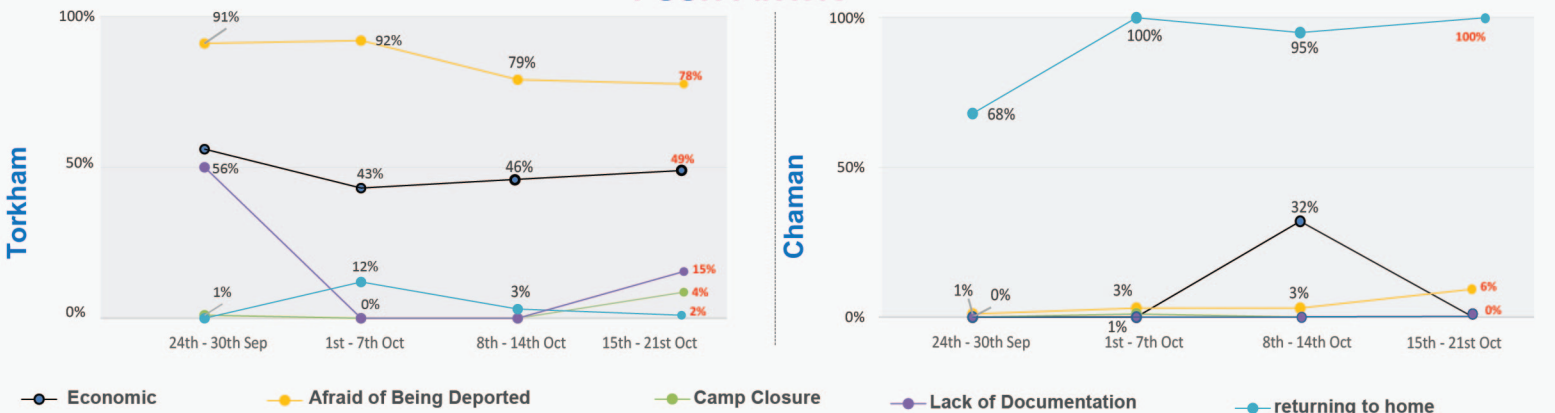
Age Group of Respondents



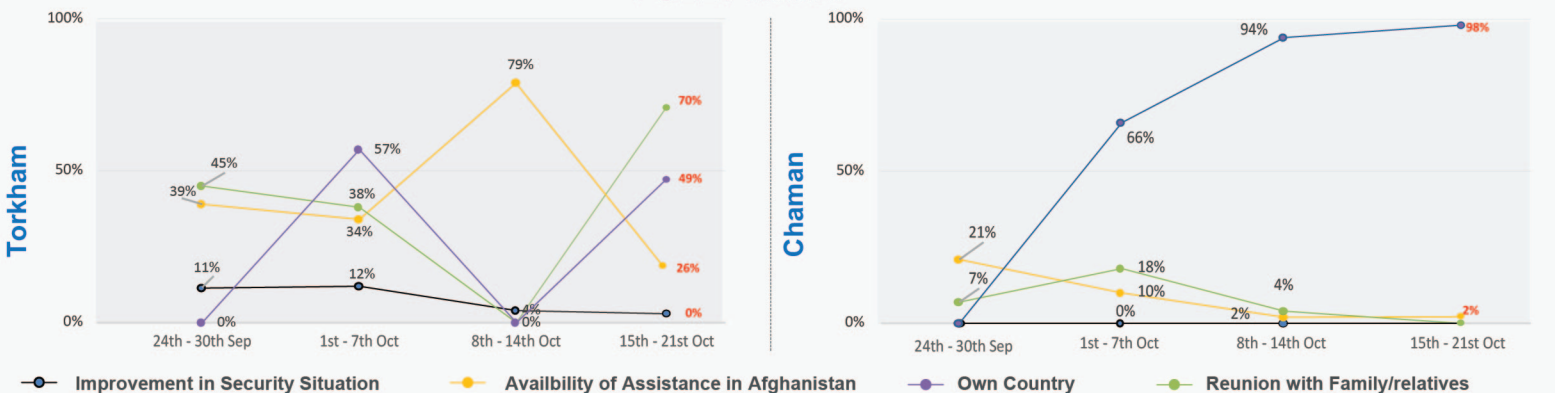
170 Families Crossed Border



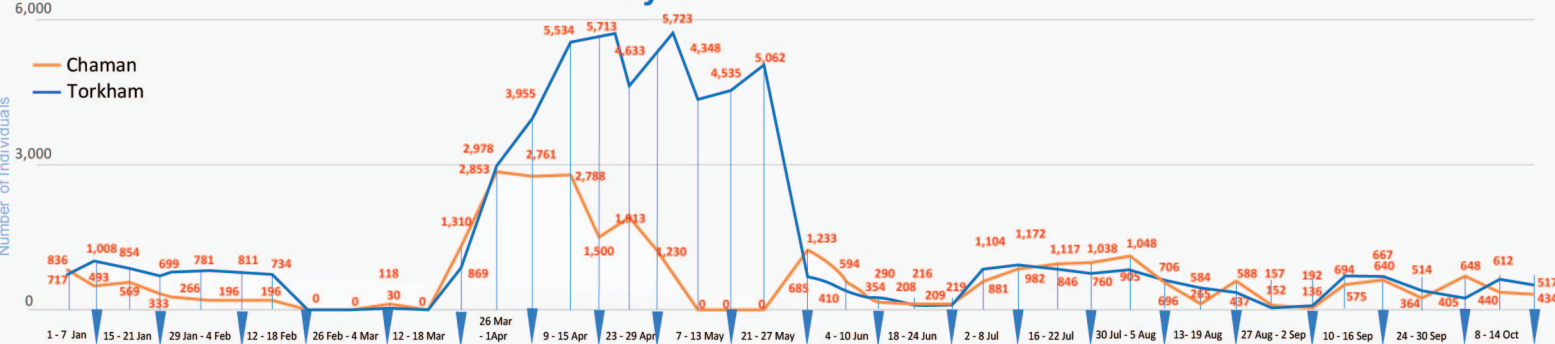
PUSH FACTORS



PULL FACTORS



Weekly Return Trend

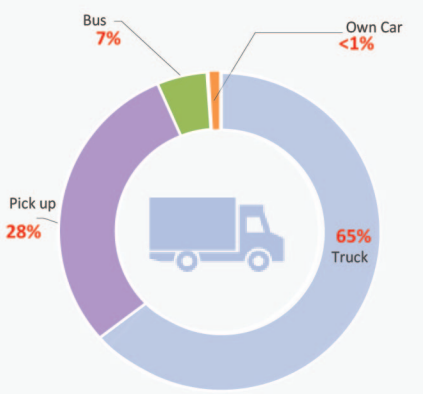


* Overall figure does not include the number of deportees during the reporting period.

Flow Monitoring - Spontaneous Returns of Undocumented Afghans from Pakistan

15th - 21st Oct

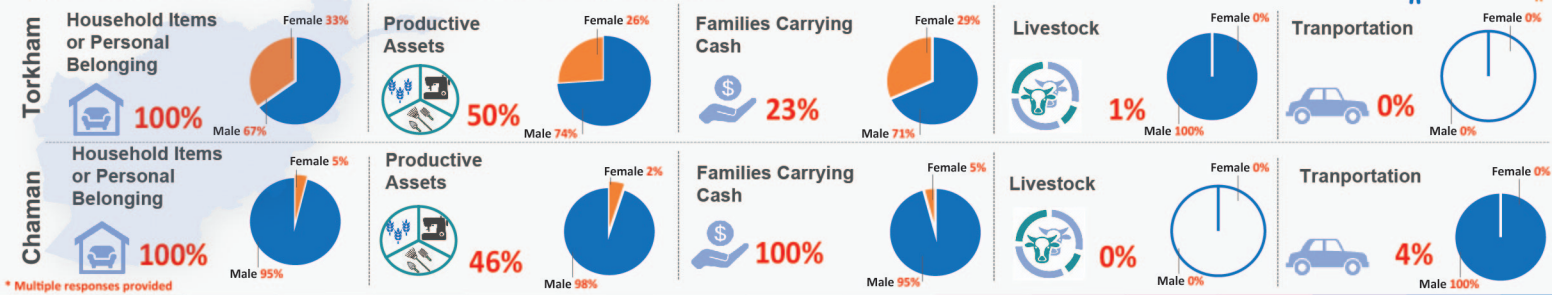
279 Vehicles crossed the border



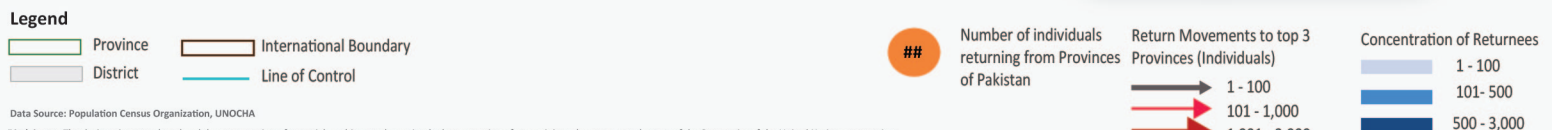
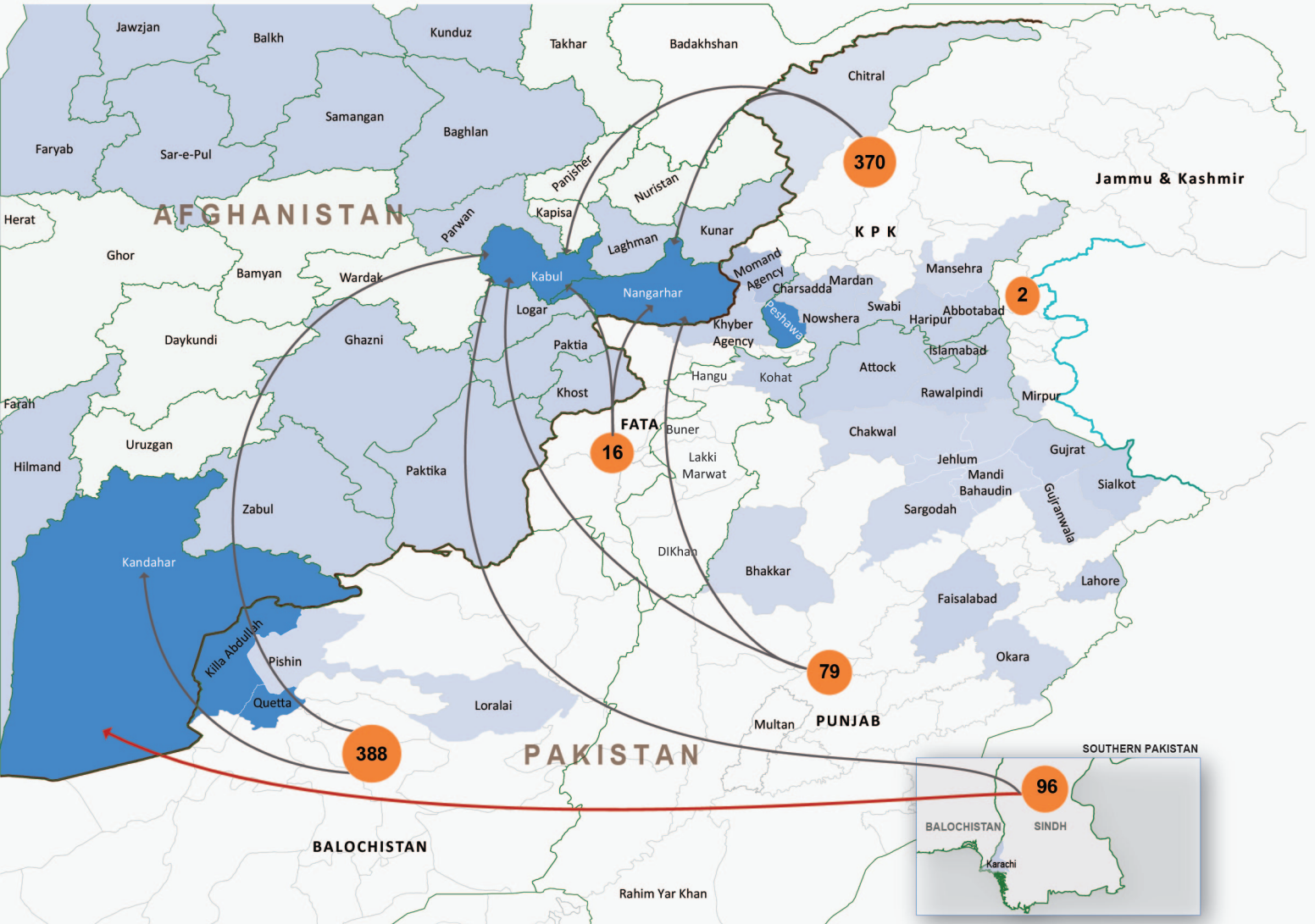
Average Amount Paid by Vehicle Type

Vehicle Type	Chaman	Torkham	On average individuals used one
Truck	Min: 4,000 PKR, Max: 100,000 PKR	Min: 5,500 PKR, Max: 100,000 PKR	9
Bus	Min: 1,500 PKR, Max: 50,000 PKR	Min: 15,000 PKR, Max: 50,000 PKR	6
Pickup	Min: 1,500 PKR, Max: 40,000 PKR	Min: 3,500 PKR, Max: 100,000 PKR	8
Rented Car	Min: 500 PKR, Max: 68,000 PKR	Min: 35,000 PKR, Max: 70,000 PKR	2

* % of Households travelling with assets to Afghanistan



Population Movement Trend for Spontaneous Returns of Undocumented Afghans from Pakistan



Data Source: Population Census Organization, UNOCHA
 Disclaimers: The designations employed and the presentation of material on this map do not imply the expression of any opinion whatsoever on the part of the Secretariat of the United Nations concerning the legal status of any country, territory, city or area or of its authorities, or concerning the delimitation of its frontiers or boundaries. The dotted line represents approximately the line of control between India and Pakistan. The final status of Jammu and Kashmir has not yet been agreed upon by the parties.