



SITUATION OVERVIEW

While an increasing amount of territory has become accessible, suicide bombings and attacks against civilians persisted during the reporting period. Violence in the northeast has caused massive displacement and at the same time restricted movement, disrupting food supplies, hindering access to basic services, and limiting agricultural activities. People affected by violence in Adamawa, Borno, and Yobe, and neighbouring Bauchi, Taraba, and Gombe States are in urgent need of life-saving humanitarian assistance.

In newly accessible areas, IDPs and vulnerable host populations are in critical need of assistance including food, water, sanitation, protection, education, shelter, and health services (Source: OCHA, 29 November 2016).

HIGHLIGHTS



In collaboration with National Emergency Management Agency and State Emergency Management Agencies, IOM continued biometric registration of conflict-affected populations, registering over 31,600 individuals in Borno and Adamawa States between 16 and 30 November.

During the reporting period, IOM distributed non-food item kits and kitchen sets to over 20,500 individuals, and completed the construction of 1,000 shelters benefitting 6,000 individuals.

IOM facilitated a training session on Psychological First Aid in coordination with the Ministry of Health, targeting 40 health care workers from newly accessible areas in Borno State.

Over 1.8 million people have been displaced in North East Nigeria. (Photo: © IOM/ Miguel Trancozo, 2016)



DISPLACEMENT TRACKING MATRIX



IOM in collaboration with National Emergency Management Agency (NEMA) and State Emergency Management Agencies (SEMAs) continued biometric registration of IDPs and affected populations. Between 16 and 30 November, a total of 8,536 households (31,609 individuals) were registered in Bulumkutu tsalleke, Bulumkutu and Monguno in Borno State (18,665 individuals), and Hong in Adamawa State (12,944 individuals). As of 30 November, 114,931 households (406,599 individuals) in Borno (282,251 individuals), Adamawa (103,147 individuals), and Yobe (21,201 individuals) States have been biometrically registered.

Assessments were carried out between 14 and 19 November in Nganzai, which identified 998 households (5,461 IDPs) and nine IDP camps in three locations: Burimari, Gasarwa and Kasudinna. In addition, IOM identified 8,293 people as returnees. A rapid assessment was conducted in Ngala on 26 November to assess the humanitarian needs of IDPs, returnees and host community. The team that carried out the joint assessment included representatives from IOM, WFP, UNICEF, WHO and MSF. Currently, there are 56,237 displaced persons residing in the camp which is located at the premises of Ngala International School.

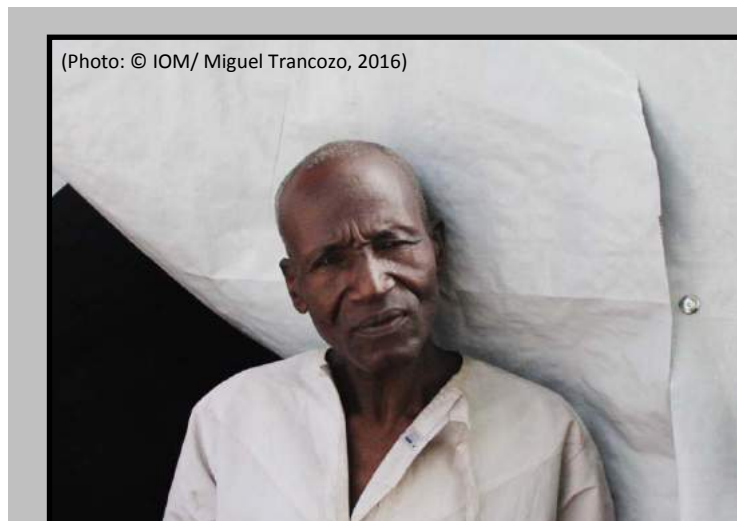
SHELTER, NON-FOOD ITEMS (NFI) AND CAMP COORDINATION AND CAMP MANAGEMENT (CCCM)

In partnership with UNHCR, IOM supports the Government of Nigeria in the Displacement Management Systems (DMS)/CCCM Sector Working Group, through the National Bureau of Statistics, and the Shelter/NFI Sector Working Group through NEMA.

From 16 to 30 November, IOM completed the construction of 1,000 shelters in Banki benefitting 6,000 individuals. Additionally, 500 emergency shelters are under construction in Konduga. Furthermore, IOM distributed NFI kits (containing mats, blankets, aqua tabs, kettles, basins, laundry detergent, bathing soap, jerry cans, and sanitary pads) and kitchen sets (including pots, serving spoons, plates, cups, spoons, and knives)

to 3,077 households (20,588 individuals) in Furore, Gerei, Yola (Adamawa), Jere, Konduga, Maiduguri MC, and Nganzai (Borno) local government areas (LGAs).

Since November 2015, 894 shelters have been reinforced in Bakasi camp reaching 1,788 households, and 3,000 emergency shelters were constructed in Bama, Gwoza and Benisheik benefitting 3,000 households. Additionally a total of 8,297 households (45,249 individuals) have been reached with NFIs.



"I had to leave my town, Ngala, with all my family because of Boko Haram. In here we are very fine, it's very good because we are safe, there is security in the place, we are strong and we receive food."

Muir, originally from Ngala, living in Banki with his family for the last four months. He and the other six members of his family live in an IOM emergency shelter.

MENTAL HEALTH AND PSYCHOSOCIAL SUPPORT (MHPSS)

During the reporting period, IOM's MHPSS team reached 12,326 displaced people through counselling, group support, recreational activities, focus group discussions, Sexual and Gender Based Violence (SGBV) sensitization, informal education, conflict mediation, and specialized mental health services.

IOM also facilitated a support workshop in collaboration with Interfaith Mediation Centre for the parents of the abducted

women from Chibok. Parents of the newly released Chibok abductees also participated. The workshop took place over three days and offered a safe space for the parents to link up with each other and explore positive coping mechanisms.

Furthermore, 25 volunteers were recruited to ensure the continuity of services in the MHPSS resource centres. The 25 volunteers and 12 MHPSS mobile team members were trained on using performance/theatre for conflict resolution through the Nigerian organization Playback Theater. The training consisted of two-day in-class training followed by two days of practice in the field.

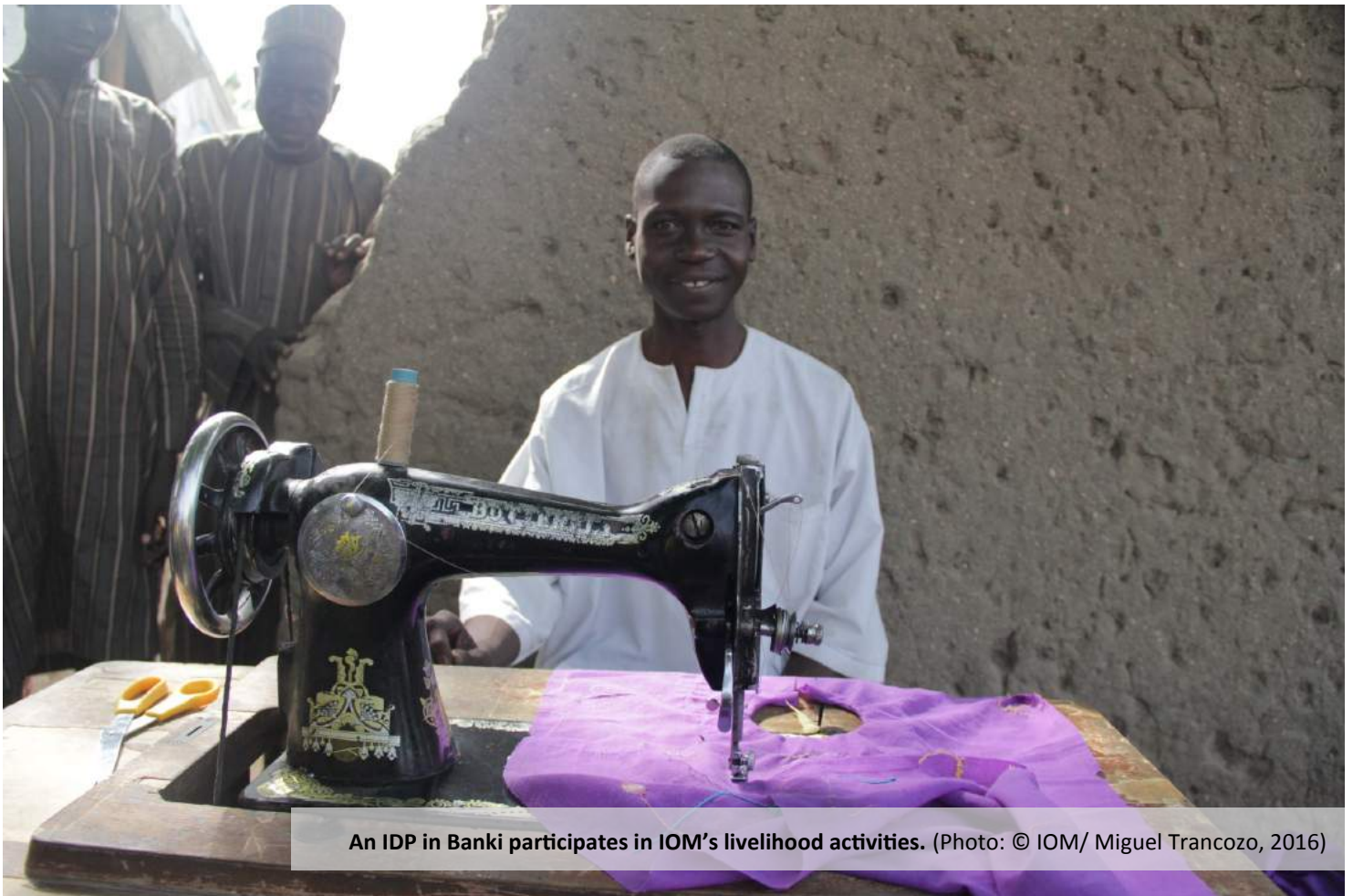
In addition, IOM facilitated a training session on Psychological First Aid targeting health care workers from newly accessible areas in Borno State. The training was organized in coordination with the Ministry of Health, and 40 health care

workers from Bama, Dikwa, Damboa, Gwoza, Kala Balge, Konduga, Kukawa, Mafa, and Ngala, LGAs participated in the two-day training.

Moreover, IOM deployed a MHPSS team to newly accessible area Ngala, during the reporting period. The team will conduct an assessment and provide first response on MHPSS.

LIVELIHOOD ASSISTANCE

IOM continues to provide livelihood assistance under the Psychosocial Programme. The activities serve as a form of community support to promote positive coping mechanisms and resilience skills among displaced persons. From 16 to 30 November, 531 IDPs were reached through livelihood activities such as cap knitting, barbering and sewing in Bama, Banki, Dikwa, Gwoza, Maiduguri, Pulka, and Yola.



An IDP in Banki participates in IOM's livelihood activities. (Photo: © IOM/ Miguel Trancozo, 2016)

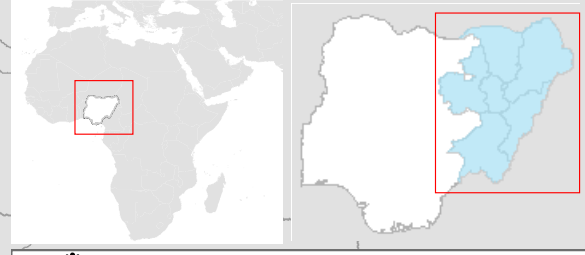
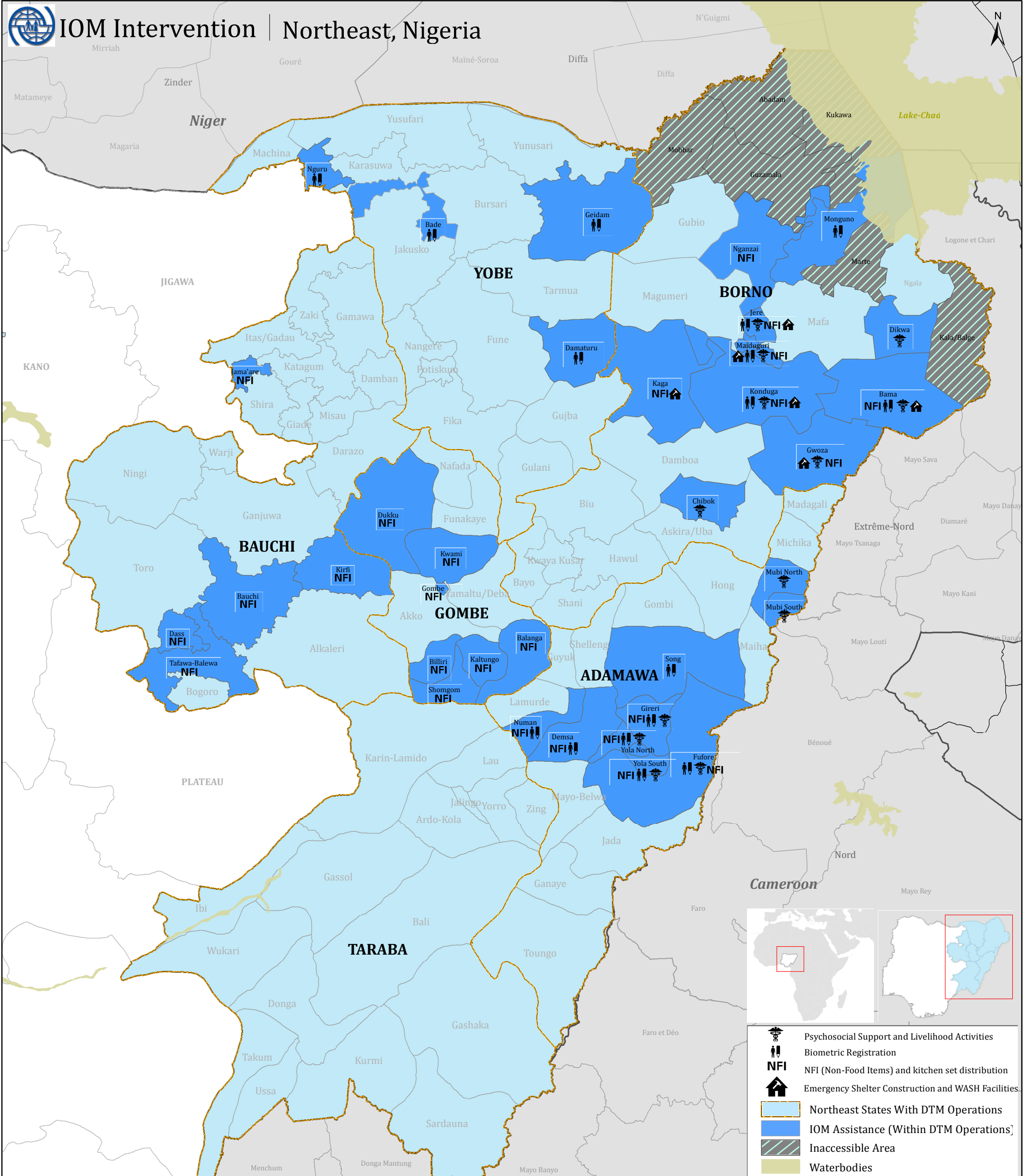
IOM'S INITIATIVES ARE SUPPORTED BY:



For more information on IOM's Response, please visit www.nigeria.iom.int

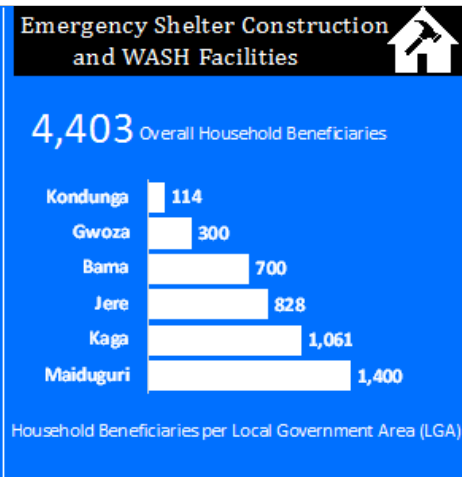
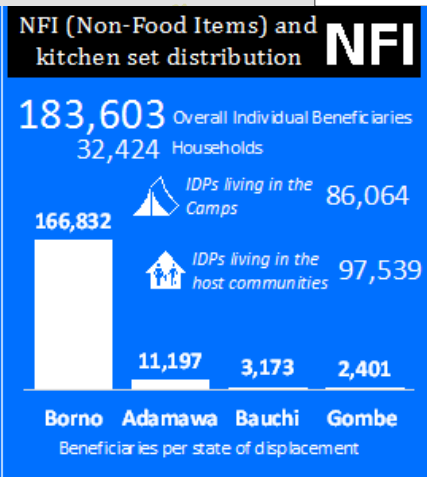
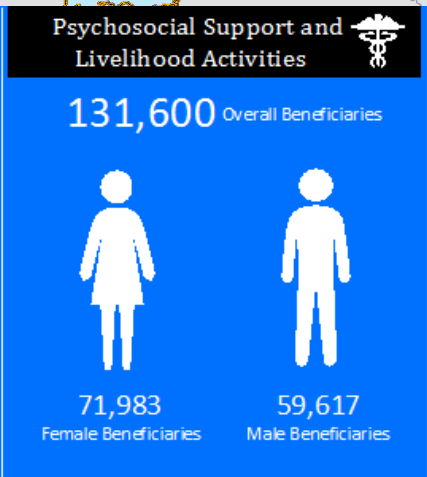
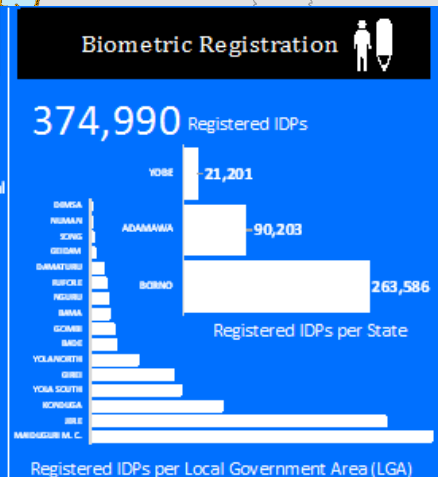
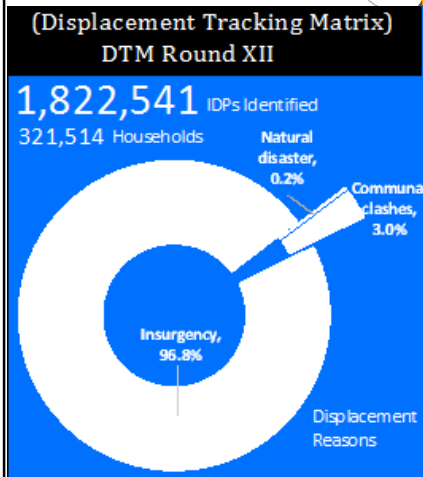
CONTACTS

Chief of Mission, Enira Krdzalic | ekrdzalic@iom.int
Emergency Coordinator, Fouad Diab | fdiab@iom.int
Project Development Officer, Paula Martinez Gestoso | pgestoso@iom.int



Legend:

- Psychosocial Support and Livelihood Activities
- Biometric Registration
- NFI (Non-Food Items) and kitchen set distribution
- Emergency Shelter Construction and WASH Facilities
- Northeast States With DTM Operations
- IOM Assistance (Within DTM Operations)
- Inaccessible Area
- Waterbodies



DISCLAIMER: This map is for illustration purposes only. Names and boundaries on this map do not imply official endorsement or acceptance by IOM.



SOURCE: IOM Nigeria, Emergency Unit
DATE: 30 November 2016

FEEDBACK: KRDZALIC Enira <EKRDZALIC@iom.int>
DIAB Fouad <fdiab@iom.int>