



# NIGERIA EMERGENCY OPERATIONS

## INTERNATIONAL ORGANIZATION FOR MIGRATION

SITUATION REPORT • 1 — 15 November 2016



Biometric registration activities in Bakassi Camp (Borno State)  
© IOM 2016 (Photo: Julia Burpee)

### Highlights

- 9,275 individuals (2,448 households) have been registered in Bakassi Camp in Maiduguri (Borno State) to support the reallocation from the schools to the IDP camp. IOM has started with the biometric registration in the newly accessible area of Monguno.
- IOM has completed the construction of more than 760 emergency shelters in Gwoza (15), Benisheik, (61) and Banki (700) for more than 4,000 affected people. To date, IOM has built 4,770 emergency shelters in Borno or distributed them as kits in Adamawa
- IOM has built four MHPSS resource centres in four IDP camps in Maiduguri. The resource centres are utilized for group and livelihood activities, for counselling, and as a point for the community to access information about services and to seek referral.

### Situation Overview

In North–East Nigeria, as well as in the surrounding regions of Niger, Chad and Cameroon, security and humanitarian conditions continue to deteriorate as populations flee violence and conflict. There are nearly 1.9 million people displaced by the conflict, with the largest IDP populations located in Borno, Adamawa and Yobe States, corresponding to 93 per cent of the total IDP population. The vast majority of IDPs identified during the assessments live in host communities (78.12%)

In the last few months, IOM has been able to access over 15 newly accessible areas in Borno State with 300,000 additional people in need of immediate humanitarian assistance. The last Displacement Tracking Matrix (DTM) assessments show that food is the biggest unmet need by nearly half the surveyed people (49.5%). Non-food items (NFIs) came in at second place with 20 per cent citing it as their most unmet need. Other urgent unmet needs included shelter, water, sanitation and hygiene and security.

Moreover, the security situation has deteriorated in Maiduguri and surrounding areas. There was a resurgence of suicide bombing/attacks during the past weeks, with three attacks and one attempt to detonate a bomb, which resulted in several deaths and injuries of civilians. Of particular concern are the attacks at the entrance of IDP camps where the humanitarian community provides humanitarian assistance to IDPs.

### CONTACTS

Chief of Mission, Enira Krdzalic  
Emergency Coordinator, Fouad Diab  
Project Development Officer, Paula Martinez Gestoso

✉ [ekrdzalic@iom.int](mailto:ekrdzalic@iom.int)  
✉ [fdiab@iom.int](mailto:fdiab@iom.int)  
✉ [pgestoso@iom.int](mailto:pgestoso@iom.int)

🌐 <http://www.nigeria.iom.int/>

## IOM RESPONSE



### Displacement Tracking and Registration

IOM continued its biometric registration of displaced people in close collaboration with the National Emergency Management Agency (NEMA) and State Emergency Management Agencies (SEMAs). During the reporting period, 9,275 individuals (2,448 households) have been registered in Bakassi Camp in Maiduguri (Borno State). The registration will continue in Adamawa, Borno and Yobe State, with special attention to newly accessible areas. IOM is currently carrying out biometric registrations in Monguno. Before the end of the year, affected population from Ngala, Gwoza and Konduga will be also biometrically registered. As of 15 November, a cumulative total of 374,990 individuals (106,395 households) have been registered, including 90,203 in Adamawa State, 263,586 in Borno State and 21,201 in Yobe State. The vast majority of IDPs who have been registered live in host communities where little or no assistance has been provided.

Furthermore, IOM is conducting the thirteenth round of Displacement Tracking Matrix (DTM) assessments across six states through November. The next DTM will include location assessments in both camps and host communities which will highlight detailed sectoral analysis for all the locations assessed under DTM for the current round. Results will be published at the end of December.



### Shelter, Non-food Items and CCCM

IOM supports the Government of Nigeria in the Displacement Management Systems (DMS)/CCCM Sector Working Group, through the National

Bureau of Statistics, and the Shelter/NFI Sector Working Group through NEMA, in partnership with UNHCR.

Throughout the reporting period, IOM completed the construction of 15 emergency shelters in Gwoza and 61 emergency shelters for 361 individuals in Benisheik (Borno State), where more than 1,000 shelters have been constructed by IOM in total. In parallel, 700 shelters have been constructed in Banki in order to ensure that more than 4,000 affected people have access to shelter, which will reduce their exposure to the environment and contribute to their increased security and dignity. To date, 4,770 emergency shelters have been built in Borno or distributed as kits in Adamawa since November 2015, benefiting more than for 31,800 IDPs. Additionally, 2,000 emergency shelters are planning to be built in Banki, Pulka and Konduga in the following weeks.

IOM has also distributed a total of 682 non-food items (NFI) kits and 259 kitchen sets to 4,836 individuals in Jere and Benisheik (Borno State) and Yola (Adamawa). 25 emergency shelter kits were also distributed in Girei (Adamawa State) to 151 displaced persons.



### Mental Health and Psychosocial Support

Between 1 and 15 November, IOM's psychosocial team reached 6,066 displaced people with lay counselling to provide basic emotional support, and recreational activities with a therapeutic aim, targeting especially children and teenagers. Activities included counseling, group support, recreational activities, focus group discussions, Sexual and Gender Based Violence sensitization, informal education, conflict mediation, and specialized mental health services.

IOM supported the federal neuropsychiatric hospital in Maiduguri to deploy psychiatric nurses to newly accessible areas. Five psychiatric nurses were deployed to Bama, Banki, Dikwa, Gwoza and Pulka. The nurses are attached to the IOM psychosocial mobile teams and are rendering specialized mental health services for IDPs suffering from mental health disorders. Additionally, psychosocial mobile teams in Maiduguri expanded to include 12 new mobile team members who received induction and orientation. In addition, one PSS team was deployed to Muna Garage (Maiduguri) and is providing services in that location. One PSS team was also deployed to Mubi, a high return area in Adamawa state.

Moreover, IOM has completed the construction of four MHPSS resource centers in four IDP camps in Maiduguri. The resource centers are utilized for group activities, counselling and livelihood activities. It is also a point of information for the community to access information about services and to seek referral.

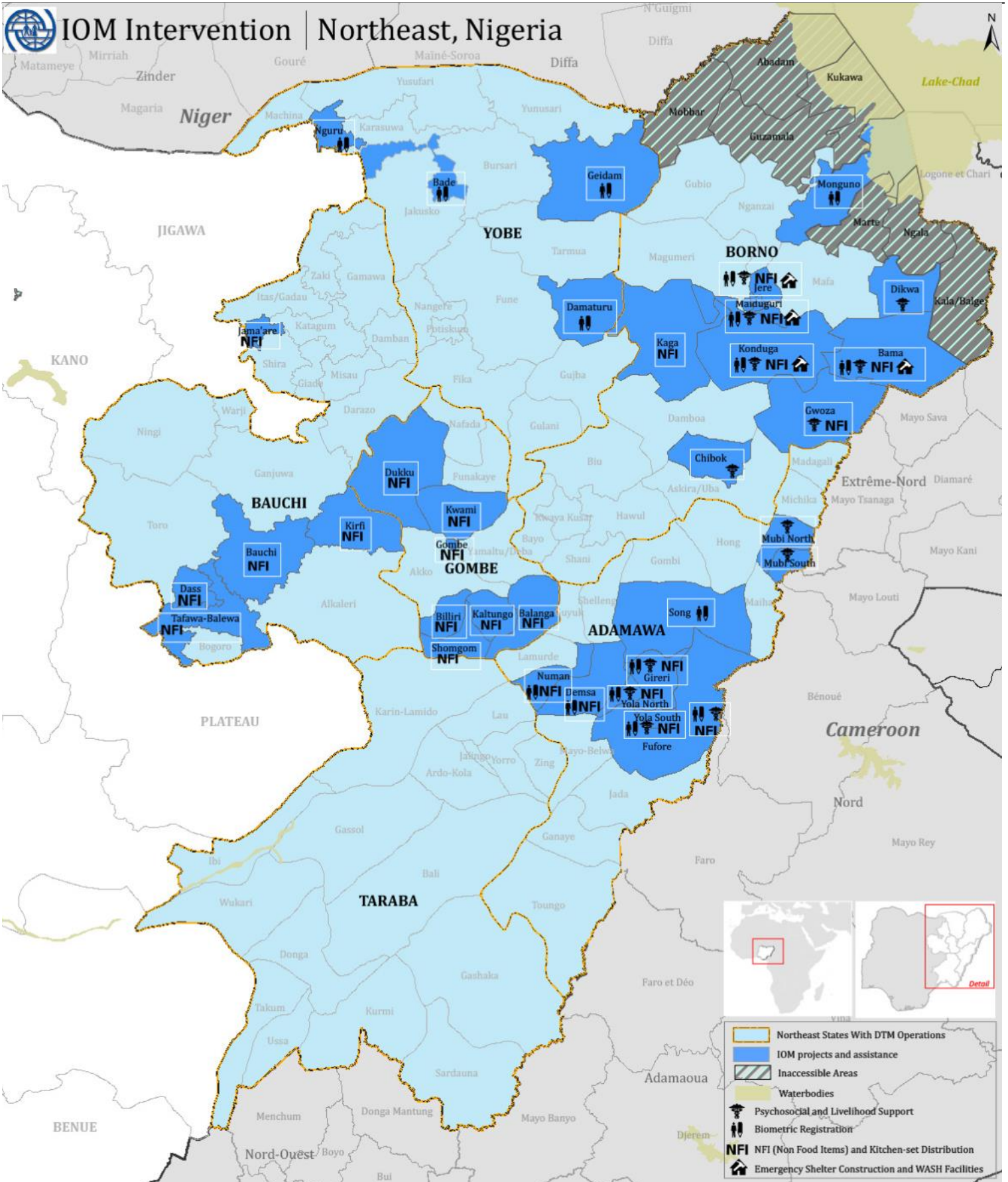


Livelihood activities in Maiduguri (Borno State)  
© IOM 2016 (Photo: Julia Burpee)



### Livelihood Component

Under the Psychosocial Program, IOM is working on livelihood activities as a form of community support in order to promote positive coping mechanisms and resilience skills among displaced persons. As a response towards improving the psychosocial well-being of displaced persons, 393 IDPs were reached through livelihood activities in Maiduguri and Yola, as well as in the newly accessible areas Banki, Dikwa, Gwoza and Pulka within the reporting period.



IOM operations are supported by :

