



Nurse Andrea examines mother and daughter at the mobile clinic in Beajah ©IOM 2015

## Partnering to Strengthen Medical Outreach

Andrea Antonelli, a nurse at the Ebola treatment unit in Tubmanburg, shares his first experience conducting community outreach through the mobile clinic service in Bomi County.

The County Health Officer gave us the list of villages to visit. The Medical Coordinator set in motion the plan and the team required to establish the requested mobile clinics. A team of Liberians working with colleagues from other countries to achieve one common goal. It was vital to offer this service and support the restoration of basic healthcare. [Read on.](#)



*“Since I got pregnant I have not gone to the hospital but I have been weak and with pain in my body. I heard about the clinic because I attend the school in Beajah. The nurse checked me, gave me medicine and told me to eat and drink plenty.” Mema Johnson, resident of Plamasoni Village, 30 minutes’ walk from Beajah.*



*“Today I am screening the patients. I ask for symptoms, I observe the body, have them take tests and then give a diagnosis and medical advice for them to follow. I feel good because we are reaching out. It is not just about medication but also giving a clear understanding of specific health issues and how to take precautions.” Tina Smith, Nurse*

## HIGHLIGHTS

### Case Management

- IOM is performing clinical and operational management of three Ebola Treatment Units (ETUs) in three counties:

- Tubmanburg, Bomi County
- Buchanan, Grand Bassa County
- Sinje, Grand Cape Mount

Since opening, 131 patients have been admitted to 3 ETUs, 12 survivors have been discharged and there have been 15 EVD related deaths.

- IOM is supporting the transition of responsibility of EVD healthcare services to the County Health Teams (CHTs). IOM is progressively reducing ETU operations while continuing to support health system revitalization and community outreach activities.

- Buchanan ETU and Tubmanburg ETUs have closed their doors to patients as of 15 April, and are implementing decommissioning and decontamination protocols.

- During the past two weeks staff has been reduced, and should remain at only 10 Foreign Medical Teams and 52 national staff come 1 May. Sinje will remain open until the region has been declared Ebola free.

### Surveillance, Coordination and Capacity Building

- IOM is providing support and health screening services at Bo Waterside, a primary border crossing point between Liberia and Sierra Leone. Between 13 and 26 April, IOM screened more than 17,470 travellers, all of whom were cleared. In addition, IOM is ensuring health screening services at two key checkpoints in GCM: Tiennii and Sinje.



Pir Unar, Tubmanburg ETU WASH Officer explains the technical aspects of decommissioning to leaders hosted at the unit. © IOM 2015

## Engaging the Community in Decommissioning of Ebola Treatment Units

With no new Ebola cases and great strides in managing the epidemic in Liberia, the process of closing or repurposing treatment facilities opened to address the outbreak is in progress. In Bomi and Grand Bassa counties which host IOM-managed Ebola treatment units (ETU) based in Tubmanburg and Buchanan, the process of transitioning responsibility for Ebola healthcare services to the County Health Teams is well underway.

With the ETUs now closed to patients, a crucial element of the decommissioning process is the ongoing community engagement led by psychosocial support and social mobilization staff. “We involved the community when we were opening the treatment unit and it is important to involve them in the process of closing” Helen Gitiche the Tubmanburg ETU Psychosocial Support Officer explains. [Read on.](#)

### Listen



This radio jingle is used to invite community members to a free mobile clinic bringing primary health care and immunization closer to communities in Jonny Tutu Town, District 2, Grand Bassa county, Liberia. IOM teams operate mobile clinics in Bomi County in 12 communities including Beajah, Tomah, Gbanbo, Tulaymu, Gbakendu, Zarmeyan, Gbongor, Solodee, Kpakla, Alasala, Boah as well as Nyamlowahun. In Grand Cape Mount County, the County Health Team has prioritized 8 communities which are Bomihood, Jenemanah, Jonderstown, Keita, Fullacamp, Camp 3, Butterhill and Mambon Kronah.

- IOM Bomi is continuing to support Gbah and Klay checkpoints with screening efforts and moreover has supported active case finding at Gbah town where 313 individuals were screened for EVD during market day.
- IOM Grand Cape Mount trained 33 persons, including 5 community leaders on primary screening and data sharing for the 3 border points of Mano River Kongo, Ganganma and Bombor Dassalam. In addition, 11 General Community Health Volunteers (gCHVs) were trained by IOM Grand Cape Mount on primary health screening to strengthen capacity at Bo Waterside BCP.

### Social Mobilization

Since 13 April, 2 social awareness training sessions have been held in Grand Cape Mount, during which a total of 52 community stakeholders (42 gCHVs and 10 community leaders) were trained on EVD prevention and awareness.

- Between 13 April and 26 April, 6 talk shows (3 in Grand Cape Mount and 3 in Bomi) were held to promote awareness and sensitization towards EVD. IOM Liberia’s medical doctors and nurses are invited on daily talk shows to advise the public about the importance of EVD prevention and good practices, such as hand washing. In aid of this cause, IOM has also been airing daily radio spots and jingles in all three counties.

- IOM-trained gCHVs are advancing EVD awareness in their communities through interpersonal communications and use of specially designed communication tools. A new IOM-developed graphic story became available during the past week for distribution in the three counties. The tool is designed to help inform the general public on the appropriate measures to take to protect themselves and their communities.

**DASHBOARD** November 2014 - April 2015

	TOTAL	BOMI	GRAND CAPE MOUNT	GRAND BASSA
--	-------	------	------------------	-------------

**Case Management**

# of ETUs operational*	1	0	1	0
------------------------	---	---	---	---

\* Tubmanburg and Buchanan ETU are currently being decommissioned.

**Surveillance, Coordination and Capacity Building**

# of markets and checkpoints supported	11	5	6	0
--	----	---	---	---

**Psychosocial Support and Survivor Follow up**

# of protection cases identified	110	39	66	5
----------------------------------	-----	----	----	---

**Social Mobilization**

# of persons trained	1,616	852	514	250
# of persons reached	85,080	22,112	29,160	33,808

**Essential Services Revitalization**

# of health facilities assessed	56	19	19	18
# of patient consultations by IOM mobile clinics	2,544	1,447	426	717
# of Border Crossing Points or Checkpoints supported	4	2	2	0
# of border officials trained in health screening	188	0	188	0

**Essential Services Revitalization**

- IOM is supporting County Health Teams in providing basic health care services to communities in Bomi, Grand Bassa and Grand Cape Mount counties through mobile clinics. The clinics, alongside providing primary health care, are a means of administering vaccines and deworming children in targeted communities. Since 13 April, 126 patients have received treatment at two locations in Grand Cape Mount, IOM Bomi has treated 595 persons and dewormed 165, while IOM Grand Bassa has provided care to 252 patients and immunized 203 persons.

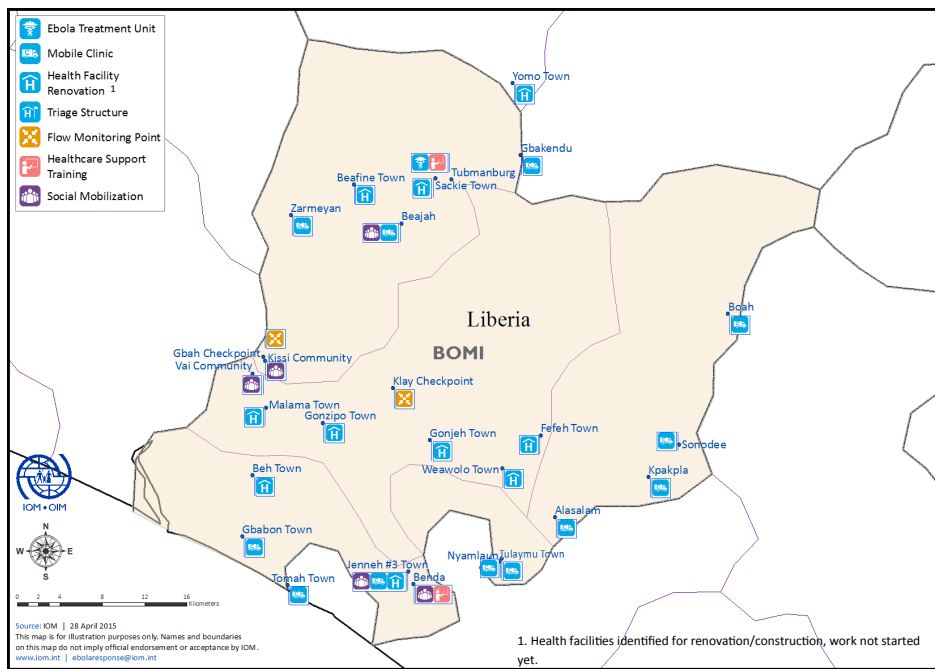
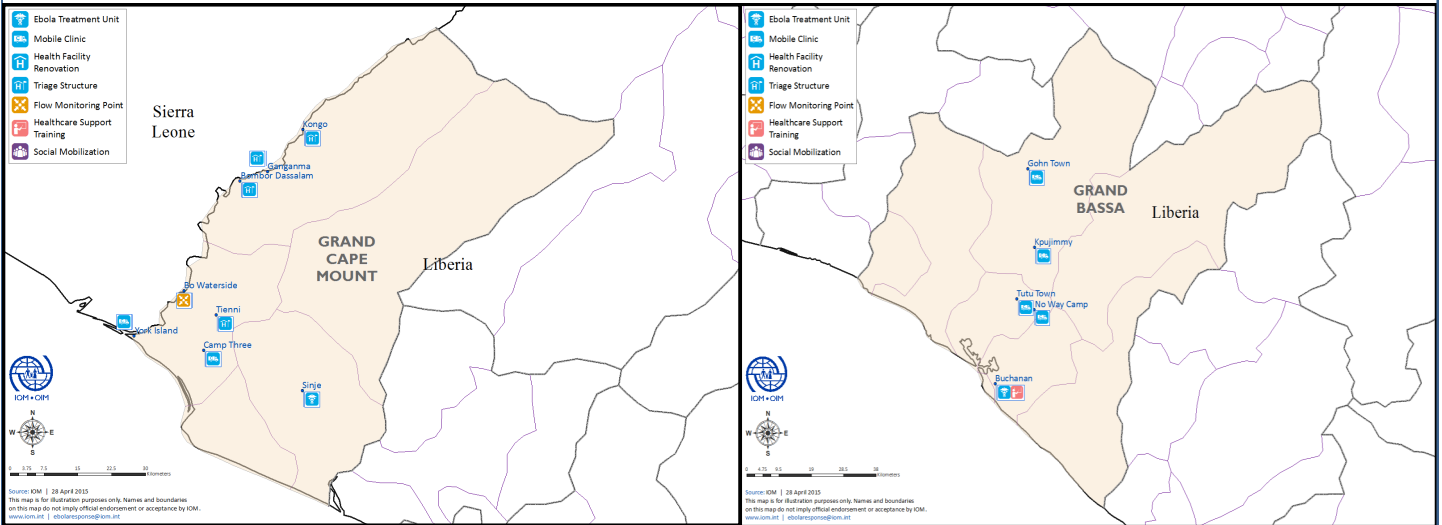
**Psychosocial Support**

- IOM psychosocial support teams continued to provide outreach services and assist social mobilizers with community-level EVD awareness raising and education, including to combat stigmatization in heavily affected communities. Between 13 and 26 April, 83 protection cases were identified during community outreach work. These are referred to the County Health Teams for further support.

- In the framework of the back-to-school programme, IOM Grand Bassa has reached out to the school administration and teachers of Al-Rashad Islamic school campus to discuss how staff can ensure their pupils' wellbeing. 15 children were left orphaned at the respective school as a consequence of EVD.



# IOM Ebola Response in Bomi, Grand Bassa and Grand Cape Mount



For more information on IOM's Ebola Response in Liberia

Please contact: [iomliberiapsu@iom.int](mailto:iomliberiapsu@iom.int)

Visit our website: [liberia.iom.int](http://liberia.iom.int)

like us on [Facebook](#)

Funding for IOM Liberia Ebola Response provided by



**USAID**  
FROM THE AMERICAN PEOPLE