



Returned migrants arriving at KM27 Quarantine Centre, Vientiane Capital.

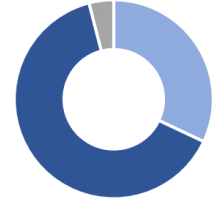
KEY FACTS

Population: 7.3 million

Urban Population: 35.7%

Population Density: 32 people/ km²

Age Structure:



■ Age 0-14 ■ Age 15-64 ■ Age 65+

✈ International Airports: 4

➔ Points of Entry (PoEs): 107

** all border checkpoints remain closed*

Migration Status

No. of Foreigners in country: 48,275

No. of Laotians abroad: 483,021

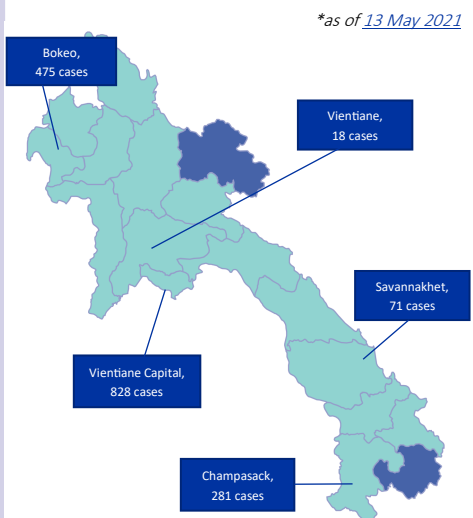
COVID-19 Situation in Lao PDR:

1,737 confirmed, 708 recovered, 2 deaths

Quarantine & Isolation Facilities: 54

People in Quarantine facilities: 7,747

TOP 5 PROVINCES WITH HIGHEST CASELOAD



SITUATION OVERVIEW

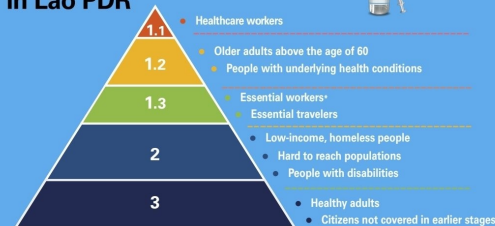
The COVID-19 pandemic has caused more than 164 million confirmed cases and over 3.4 million deaths around the globe since 16 January 2020. The outbreak has caused unprecedented impacts on human mobility, leaving migrants and mobile populations among the most vulnerable.

Lao People's Democratic Republic has been faced with a second wave of COVID-19 outbreak in April 2021. The increase in cases started in mid-April where communities carried out celebration and cultural activities for Lao Pi Mai and Thai Songkran. Irregular crossings near the Lao-Thai borders led to the import of undetected cases, which sparked off community transmission across provinces. The number of cases in country has risen from less than 100 to over 1,000 in two weeks. According to PMO 15/ PM on the Prevention and Control of COVID-19, a [nation-wide lockdown](#) is in place from 21 April until 20 May. Citizens are prohibited to leave their homes except for essential purposes and tasks authorized by the government.

International, local and traditional Points of Entry (PoEs) nation-wide remain closed, except for designated PoEs that are approved to open for logistics purposes. Lao migrant workers and nationals are allowed to return via international PoEs and there will be no penalty for returnees with irregular status if they return through official PoEs.

Since 27 January, the country's COVID-19 vaccines has been rolled out to priority groups and the general population. As of 19 May, over 553,000 people have received the first dose of vaccine against COVID-19, while over 95,000 people have been fully vaccinated with two doses.

When will I get vaccinated? Stages of COVID-19 Vaccination in Lao PDR



NATIONAL DEPLOYMENT AND VACCINATION PLAN

Under the National Vaccination Plan from Ministry of Health, essential travellers including migrant workers, belong to one of the priority groups for getting the COVID-19 vaccine. Eligible persons and the general public are encouraged to register on vaccinatelaos.la, or visit the nearest district hospital for getting the vaccine.

There are currently two types of vaccines available in Lao People's Democratic Republic: 1) AstraZeneca vaccine; and 2) Sinopharm vaccine.

COVID-19 RESPONSE ACTIVITIES IMPLEMENTED FROM FEBRUARY TO APRIL, 2021

COORDINATION AND PARTNERSHIP



IOM staff providing pre-departure briefing to stranded migrants.

- Facilitated the return of six stranded migrants to their country of origin through coordination with the Department of Immigration (DOI), Ministry of Foreign Affairs (MoFA), relevant embassies, and other IOM offices.
- Conducted field visits to Champasack and Savannakhet provincial quarantine centres (QCs) and met with government counterparts and development partners to discuss ways to better support migrants affected by the pandemic, and QC management.

RISK COMMUNICATION & COMMUNITY ENGAGEMENT



Mdm. Baykham Khattiya, Minister of Labour and Social Welfare (LSW) examining a product made by the garment factory workers, Vientiane Capital.

- Provided 2,000 Non-food Items (NFI) kits and cleaning supplies to support returned migrants and QC management in Vientiane Capital and Savannakhet.
- [Visited four factories across Vientiane Capital](#) with representatives led by the Minister of LSW to raise awareness on safe migration and ethical recruitment under COVID-19 in commemoration of Labour Day.
- Participated in [#VaccinateLaos](#) campaign organized by Ministry of Health (MoH), UNICEF, and WHO to strengthen vaccine messaging with migrant-inclusive language.
- Developed and disseminated 2,500 pcs of Information, Education, and Communication (IEC) materials on vaccine information and COVID-19 awareness for migrants at PoEs and QC in Vientiane Capital and Savannakhet province.

POINTS OF ENTRY (PoEs)



IOM supported the installation of protective glass at counters, Wattay Airport.

- Provided over 25,000 pcs of PPE supports to provincial Immigration in ten provinces for better protecting frontline officials and returning migrants.
- IOM and DOI conducted a monitoring visit at Wattay International Airport and Lao-Thai Friendship Bridge I to observe facility upgrade and held focus group discussion with PoE management to better understand their needs.
- Held a [technical consultation workshop](#) on the [Standard Operating Procedure](#) (SOP) for frontline officials at PoEs with DOI, Ministry of Health (MoH), and WHO. The SOP will provide guidance on COVID-19 case management and prevention of disease transmission at PoEs.
- Held a [project closing workshop](#) to mark the successful completion of COVID-19 Immigration and Border Management Response Project with representatives from the Australian Embassy.

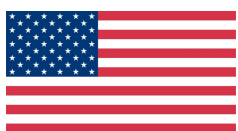
SURVEILLANCE



IOM staff conducting interviews with a returned migrant, Vientiane Capital.

- Completed data collection activities of 417 returned migrants (204 women) in Vientiane Capital, Champasack, Saravan, and Xaiyaboury. The survey aims to assess the socioeconomic impact of COVID-19 on migrants.
- Published [Flow Monitoring Survey Report 2020](#), which assesses internal and international migration flow of Lao migrants under COVID-19.

IOM'S COVID-19 RESPONSE IS SUPPORTED BY...



Australian Government



From
the People of Japan

Laudes
Foundation



UN COVID-19 Response
and Recovery Fund
#RecoverBetterTogether



Schweizerische Eidgenossenschaft
Confédération suisse
Confederazione Svizzera
Confederaziun svizra

Swiss Agency for Development
and Cooperation SDC



INTERNATIONAL ORGANIZATION FOR MIGRATION
IN LAO PEOPLE'S DEMOCRATIC REPUBLIC

3rd Floor UN House, Lane Xang Avenue, P.O. Box 345 Vientiane Capital, Lao PDR



+856 21 267 734



iomlaopdr@iom.int