

# Lake Chad Basin Crisis: IOM Response

June 2016



## Nigeria

**2,155,618** IDPs  
Source: DTM (Camps & Host Communities)

**270,834** Beneficiaries Assisted

**IOM is lead of CCCM WG and Emergency Shelter/NFI WG (w/ NEMA)**

**IOM activities:**  
-DTM (9th Round - Apr 2016)  
-Emergency Shelter and NFI Distribution  
-Psychosocial Support - Livelihoods Support  
-Biometric Registration - CCCM Capacity Building

## Niger

**241,000** Displaced Persons\*  
Source: Govt of Niger/UNHCR (May 2016)

IDPs 53% Refugees 34% Ret. 13%

**197,248** Beneficiaries Assisted

**IOM is co-lead of the Shelter and NFI WG (w/ CCH - Cabinet of Prime Minister)**

**IOM activities:**  
-Shelters and NFI distribution -Social Cohesion  
-Cash for Work -Conflict Mitigation Training  
-Income Generating Activities (IGA) for youth at risk  
-Border Monitoring -Infrastructure Rehabilitation

## Cameroon

**295,525** Displaced Persons  
Source: DTM (Apr 2016), UNHCR (Jun 2016)

IDPs 63% Ref. 24% Ret. 13%

**29,599** Beneficiaries Assisted

**IOM activities:**  
-DTM (3rd Round - Jun 2016)  
-Emergency Shelter and NFI Distribution  
-Support to Agriculture

## Chad

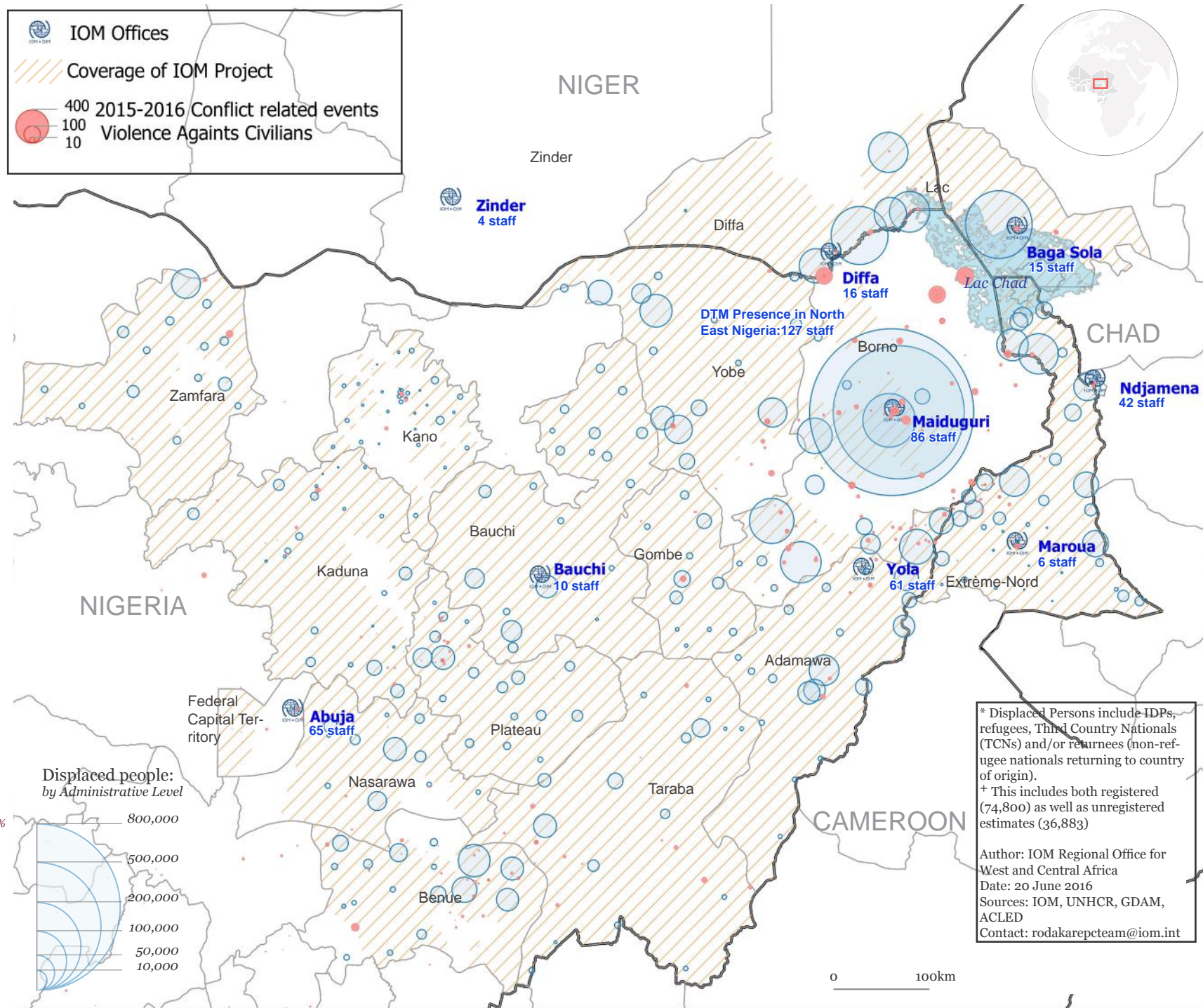
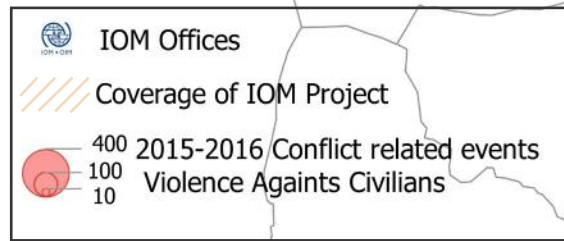
**119,019** Displaced Persons\*\*  
Source: DTM, WFP, UNHCR (Jun 2016)

IDPs 80.1% TCNs 0.5% Ref. 8.9% Ret 10.5%

**73,162** Beneficiaries Assisted

**IOM is co-lead of CCCM and Shelter/NFI clusters (w/ UNHCR)**

**IOM activities:**  
-DTM (4th Round - Apr 2016)  
-Emergency Shelter and NFI Distribution  
-Voluntary Relocation Support  
-Psychosocial Support



\* Displaced Persons include IDPs, refugees, Third Country Nationals (TCNs) and/or returnees (non-refugee nationals returning to country of origin).  
 † This includes both registered (74,800) as well as unregistered estimates (36,883)

Author: IOM Regional Office for West and Central Africa  
 Date: 20 June 2016  
 Sources: IOM, UNHCR, GDAM, ACLED  
 Contact: rodakarepcteam@iom.int

0 100km