



KEY FIGURES

33,876
refugees relocated
since 9 September

12,562
HHs relocated
since 9 September

© IOM 2016 (David Zimmerman)

Nationality screening and registration of refugees in Pagak border entry point.

HIGHLIGHTS

- A total of 33,876 South Sudanese refugees (12,562 Households) have been relocated from Pagak border point to four camps (Kule, Jewi, Tierkidi and Nguenyiel) in Gambella region from 9 September to 25 October using rental buses and IOM sixty-seater bus. The majority of these refugees are women and children.
- The new camp (Nguenyiel) officially opened on 20 October and IOM has since transported 4,892 refugees (2,005 HHs) to the said camp to date. It is located c. 12 km. from Tierkidi camp and is the seventh camp opened by UNHCR/ARRA in Gambella region to provide protection and services to South Sudanese refugees fleeing their country. The camp can accommodate a maximum of 50,000 individuals. At present, the capacity at the reception center can receive up to 1,000 individual refugees. Additional hangars are being constructed to accommodate more than 3,000 individual refugees per day.
- In Jewi camp, 400 Emergency Shelters, funded by the Government of Japan, were constructed on 25 September and are now occupied by new arrivals.
- Jewi, Tierkidi, and Kule camps with a capacity for 15,000, 7,400 and 500 individuals respectively are now full.

DEMOGRAPHICS



68%
Children

48.3% Boys, 51.7% Girls
(23,021 ages 0-17)

11,125 Boys & 11,896 Girls)



1.7%
Elderly
(580 ages 60
and above)



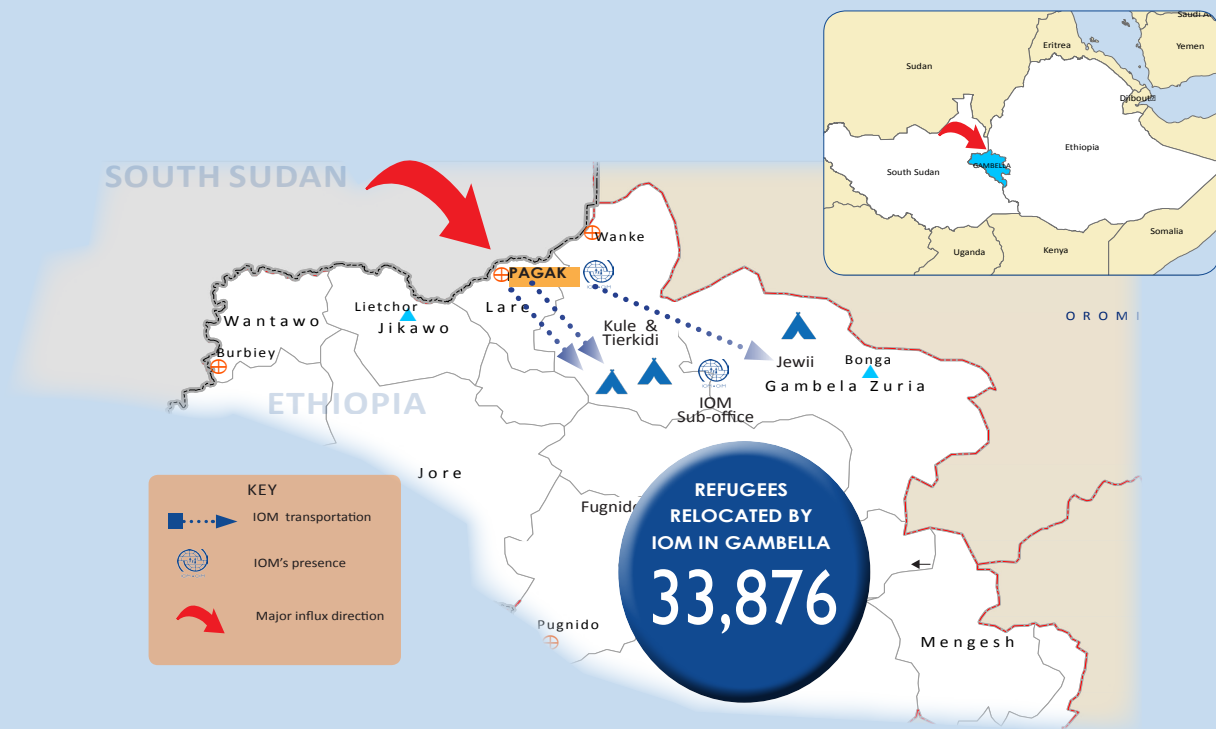
16.6%
Women
(5,627 ages 18-59)



13.7%
Men
(4,648 ages 18-59)

Date	From	To	Total No. of Refugees		Rented Buses	IOM Buses
			HH	Total		
9-Sep-16	Pagak	Jewi	110	382	9	0
16-Sep-16	Pagak	Tierkidi	137	492	11	0
17-Sep-16	Pagak	Tierkidi	135	509	11	0
18-Sep-16	Pagak	Jewi	133	515	11	0
19-Sep-16	Pagak	Tierkidi	133	503	11	0
20-Sep-16	Pagak	Jewi	187	603	13	0
21-Sep-16	Pagak	Tierkidi	374	1,189	21	0
21-Sep-16	Pagak	Tierkidi	487	1,112	21	0
22-Sep-16	Pagak	Jewi	433	1,058	20	0
23-Sep-16	Pagak	Tierkidi	455	1,212	20	0
23-Sep-16	Pagak	Tierkidi	430	1,117	20	0
24-Sep-16	Pagak	Jewi	334	664	12	0
24-Sep-16	Pagak	Kule	262	589	10	0
25-Sep-16	Pagak	Jewi	558	1,334	22	0
26-Sep-16	Pagak	Tierkidi	522	1,484	24	0
28-Sep-16	Pagak	Jewi	723	1,711	29	0
29-Sep-16	Pagak	Tierkidi	655	1,920	31	0
30-Sep-16	Pagak	Jewi	741	2,038	33	0
1-Oct-16	Pagak	Jewi	699	2,221	34	1
2-Oct-16	Pagak	Jewi	436	1,636	24	1
3-Oct-16	Pagak	Tierkidi	540	1,665	25	1
6-Oct-16	Pagak	Tierkidi	854	2,192	32	1
7-Oct-16	Pagak	Tierkidi	602	1,324	21	1
13-Oct-16	Pagak	Tierkidi	617	1,514	24	1
20-Oct-16	Pagak	Nguenyiel	363	986	21	1
21-Oct-16	Pagak	Nguenyiel	524	1,284	24	1
22-Oct-16	Pagak	Nguenyiel	564	1,264	25	1
25-Oct-16	Pagak	Nguenyiel	554	1,358	27	1
Total			12,562	33,876	585	10

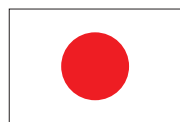
RELOCATION



In response to renewed fighting in South Sudan which propelled an influx of thousands of asylum seekers fleeing into Gambella region, IOM started its relocation operation on 9 September transporting refugees to Kule, Tierkidi, Jewi and Nguenyiyiel camp. Kule, Jewi, and Tierkidi camps have reached their maximum absorption capacity and Nguenyiyiel camp was opened on 20 October. During the ongoing relocation process, IOM maintained its role to safely transport the refugees including the most vulnerable persons with specific needs inter alia disabled individuals, unaccompanied children, elderly without family support and pregnant and lactating women. IOM medical staff continues to screen refugees boarding the buses at departure point to check their fitness to travel and escort refugees during the journey.



IOM appreciates the invaluable support of donors and partners that enabled us to reach out to those most in need



From
the People of Japan

