



Consultation at IOM's newly launched mobile health and nutrition clinic, Shifo IDP site, Kochere (Gedeo) / IOM 2018

SITUATION OVERVIEW

Continued insecurity and localized conflict between communities in Ethiopia's Gedeo Zone (Southern Nations, Nationalities, and Peoples' Region – SNNPR) and West Guji Zone (Oromia Region) have led to the rapid displacement of nearly 960,000 people between April and July 2018. Since mid-August, returns have begun toward areas of origin, though the situation for returnees remains precarious. Many are unable to return to their original properties, and now gather in new collective sites in the kebele (town council) of origin.

Since the beginning of returns last month, over 265,000 individuals have reportedly been transported back to their area of origin through government facilitation. These movements now occur on a daily basis, affecting considerably the population in areas targeted by humanitarian interventions and making operational planning particularly challenging. As IDP destinations are

also largely unknown, identifying new target areas and caseloads in need of humanitarian assistance requires multiple time- and resource-consuming assessments.

Additionally, humanitarian partners' access to existing IDP sites and host communities has in many cases been restricted. IOM, alongside the rest of the humanitarian community and donors, is advocating to maintain access to the various locations where it intervenes and where life-saving intervention remain needed.

In this changing context, IOM continues to pursue multisectoral interventions to address needs where they exist. IOM Site Management Support teams lead the identification of locations for service delivery, while WASH, ES/NFI, Health, and DTM teams support these collective sites and host communities with life-saving services and interagency coordination.

CONTACTS

Preparedness and Response Division
 Donor Relations Division

✉ prd@iom.int
 ✉ drd@iom.int

☎ +41.22.7179.271 🌐 <http://www.iom.int/countries/ethiopia>



DISPLACEMENT TRACKING MATRIX (DTM)

To adapt to the changing nature of the current displacement crisis, DTM is now producing a New Arrivals Update twice per week on current population movements in Gedeo and West Guji. These seek to inform IOM's multisector interventions and strategic decision-making through provision of relevant and timely estimate indications of population movements. Reports are released on Mondays and Thursdays in limited circulation.

Additionally, DTM will release an abbreviated version of Gedeo-West Guji Rapid Response Assessment (RRA) Round 2 for limited circulation around Monday 10 September. DTM will then focus on releasing RRA Round 3, which includes data on the return situation at site level and in host communities. The planned release date for the reports is between 14-18 September, depending on the endorsement process.



SITE MANAGEMENT SUPPORT

People Reached	157,843
Sites directly supported	22
Community committees established	48
PWSN registered for support	350
Communal facilities built	34

IOM's SMS response focuses on four key pillars: Community Services, Site Operations and Improvements, Coordination and Information Management, and Capacity Development. IOM continues to work with zonal and woreda-level authorities to support displaced communities. Due to recent IDP movements to kebeles of origin, the composition of the displacement crisis has changed significantly. Returnees continue to arrive in new collective sites and host communities across West Guji and Gedeo Zones.

Moving forward, SMS is now supporting on the identification of return areas for multi-sector intervention. This is joint effort between humanitarian partners and local authorities who can advise on the destination points of returnees. At the same time as launch new responses in areas of return, SMS is now participating in decommissioning and restoration processes at the several former IDP sites which are now empty. These locations – many of them schools and churches – will be cleaned and returned back to their previous functions as the new school year starts.



EMERGENCY SHELTER/NON-FOOD ITEMS

People Reached	108,225
DFID blankets distributed	47,400
USAID blankets distributed	5,000
DFID shelter kits distributed	9,400
Communal shelters constructed	33

IOM continues to provide emergency shelter and non-food items support in collective sites and host communities. With the recent shift in displacement, ES/NFI teams are now supporting SMS-identified locations of collective new arrivals. This support includes distributing emergency shelter kits in partnership with agencies like ShelterBox, and rehabilitating existing structures where new arrivals are congregating so as to provide better temporary shelter options.

Additionally, IOM is providing support to the interagency response through its role as the NFI cluster lead with staff deployed at both national and zonal levels. IOM's mobile storage unit (MSU) also provides warehousing for humanitarian partners' goods and its truck supports on delivery for partner goods through daily sharing arrangements.



WATER, SANITATION AND HYGIENE (WASH)

People Reached	103,239
Latrine stances constructed	712
Hygiene kits distributed	12,394
Hygiene promoters trained	33
People reached with hygiene messaging	62,365

IOM is concentrating its WASH response in 13 sites in Gedeb woreda (Gedeo) and 11 sites in Kercha woreda (W. Guji). The intervention looks at comprehensive WASH packages tackling the most urgent needs in terms of adequate access to water, sanitation and hygiene awareness.

IOM WASH is continuing to assist people in collective areas and kebeles of origin. A recent multisectoral assessment found that collective return areas lack basic services and are in great need of WASH interventions. In response to these new needs, IOM WASH teams have begun implementing sanitation facilities in returns area, constructing 40 latrines in six new kebeles. WASH teams are currently conducting water assessments in areas of return, to support communities' safe access to clean water. Both activities are conducted in coordination with SMS teams and humanitarian partners.

MOBILE HEALTH TEAMS LAUNCH

WITH funding from the Italian government, IOM has officially launched Mobile Health and Nutrition Teams (MHNTs) in Ethiopia's conflict-affected Gedeo and West Guji zones. This intervention addresses a critical gap in primary health care and nutrition services among displaced communities.

On 20th August 2018, the first Mobile Health and Nutrition Team began operating in Yirgachefe Woreda (Gedeo Zone), at Chito IDP site. Following this, a second MHNT was launched on 29th August in Kochere Woreda (Gedeo Zone), at Shifo IDP site. Services provided by the teams include:

- Patient consultations for children and adults;
- Nutrition screenings (MUAC) for children under 5 years, with referral to nutrition partners;
- Health education and promotion activities;
- Daily surveillance on epidemic-prone diseases, with reports shared on a daily basis to Woreda health authorities.



DISPLACED PEOPLE WAIT IN LINE FOR CONSULTATIONS / IOM 2018

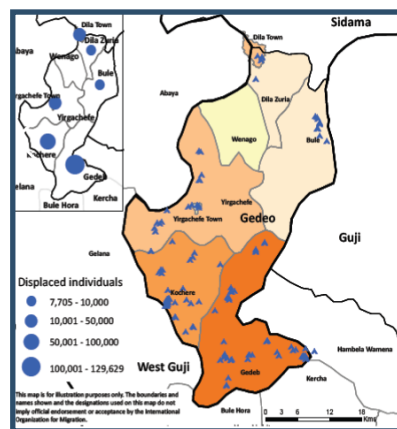
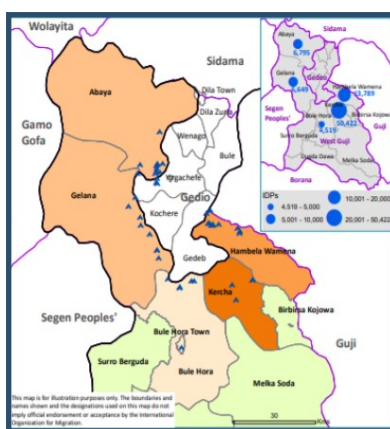
IOM plans to soon have a third mobile health clinic running in West Guji Zone, and has identified Kercha Woreda as a potential area for operation. Additionally, IOM plans to renovate a minimum of two existing health facilities damaged during the conflict. Assessments for this intervention are underway, and updates will be provided soon.



IOM MOBILE HEALTH WORKERS AT CHITO IDP SITE (GEDEO) / IOM 2018

INITIAL HIGHLIGHTS

PEOPLE REACHED	1,499
MOBILE CLINICS OPERATED	2
PATIENT CONSULTATIONS	779
CHILD MALNUTRITION SCREENINGS	247
PEOPLE REACHED WITH HEALTH EDUCATION MESSAGES	473



IDPS AT EGU ABYI ARE OF RETURN - KERCHA (WEST GUJI) / IOM 2018

IOM activities in response to the Gedeo and West Guji Crisis are supported by:

