












DISPLACED WOMEN AND CHILDREN IN THEIR COLLECTIVE SITE © IOM 2019/Z.HDIDOU

SITUATION OVERVIEW

Localized conflict in Benishangul-Gumuz region (BSG) and East and West Wollega zones of Oromia region since September 2018 has displaced an estimated 191,752 individuals, most of whom resided in Kamashi zone of BSG region and along the border areas between the two regions. Of this number, approximately 177,205 individuals are displaced in the Oromia region, of which over 60% are now located in East Wollega zone, which hosts the largest IDP caseload spread across 7 woredas, 25 collective sites and 38 host communities. Displacement in West Wollega is spread across 10 woredas, 16 collective sites and 57 host communities.

Since March, IDP returns began toward areas of origin along the regional border, though the situation for these populations on the move remains precarious. Many are unable or unwilling to return to their original properties as tensions along the border are reportedly still high, and physical damage extensive. The majority of IDPs remain in collective sites or host communities in East and West Wollega zones. IOM emergency response teams are currently implementing Emergency Shelter and Non-Food Item (ES/NFI) support, Water, Sanitation and Hygiene (WASH) services, Site Management Support (SMS), and Emergency Health with Psychosocial Support services in 13 sites across both zones. Additionally, IOM’s Displacement Tracking Matrix (DTM) has now conducted two rounds of Rapid Response Assessment (RRA) surveying across East and West Wollega zones and Kamashi zone.

The situation has been further complicated by access challenges to IDP sites. Insecurity and local administrative policies have limited IOM’s ability to operate needs-based programming in several sites. Additionally, the fast-approaching rainy season will further complicate physical access to already remote sites. IOM continues to increase its field presence, with 40 staff operating across both zones and is soon to activate a humanitarian hub in Nekemte Town, East Wollega zone.

-  **31** Latrine facilities constructed
-  **25** Hygiene promoters trained
-  **1300** Hygiene kits distributed
-  **375** Emergency shelters kits distributed
-  **3175** NFI kits distributed (in-kind & cash)
-  **36** Community committees established
-  **477** People with Special Needs provided with solar lantern support
-  **1311** Mobile health consultations conducted
-  **732** Child malnutrition screenings



CHILDREN STANDING BY THEIR CHILD-FRIENDLY LATRINES © IOM 2019/Z.HDIDOU

WASH

IOM is concentrating its WASH response in 4 sites in East Wollega and 3 sites in West Wollega. The intervention pursues comprehensive packages tackling the most urgent needs related to adequate access to water, sanitation and hygiene facilities and awareness.

To date, IOM has distributed 1,100 hygiene kits in East Wollega, constructed child friendly latrines and waste disposal pits across both zones, trained hygiene promoters and established hygiene promotion committees. Additionally, IDPs have participated in weekly cleaning campaigns and awareness campaigns. In West Wollega, IOM has commissioned the construction of 22 latrines, recruited and trained hygiene promoters, and is preparing for distribution of hygiene kits in multiples sites.

ES/NFI

IOM has been supporting communities in East and West Wollega with emergency shelter kits, communal shelter construction including kitchens, and rehabilitation support. While Shelter operations were suspended in East Wollega due to administration policy since 1st March, the team will now re-launch emergency shelter interventions throughout the zone. In East Wollega 800 NFI kits have been distributed across 8 sites and 200 ES kits have been delivered to support ongoing community initiatives. In West Wollega, the rehabilitation and construction of communal shelters communal kitchens is ongoing. IOM is now preparing a cash-for-NFI distribution for 2,372 households and NFI kits distribution to 439 households.



A COMMUNAL KITCHEN UNDER CONSTRUCTION IN WESTERN STAR SITE, WEST WOLLEGA © IOM 2019/Z.HDIDOU



A COMMITTEE MEETS IN GIMBI WAYSTATION SITE, WEST WOLLEGA © IOM 2019/Z.HDIDOU

SMS

IOM's SMS response focuses on four key pillars: Community Services, Site Operations and Improvements, Coordination and Information Management, and Capacity Development. In East Wollega zone, 36 committees have been established and shelter/NFI/education needs assessments have been conducted for 8 sites. Multi-sectoral referral pathways are being established to support the diverse needs of IDPs, and community feedback mechanisms are in place to improve the organization's accountability to affected populations and appropriateness of intervention. IOM SMS teams have been conducting woreda-level coordination meetings, as well as training for woreda authorities, partners, IDP committees and kebele officials on site management to ensure mutual understanding and cohesion of interventions.

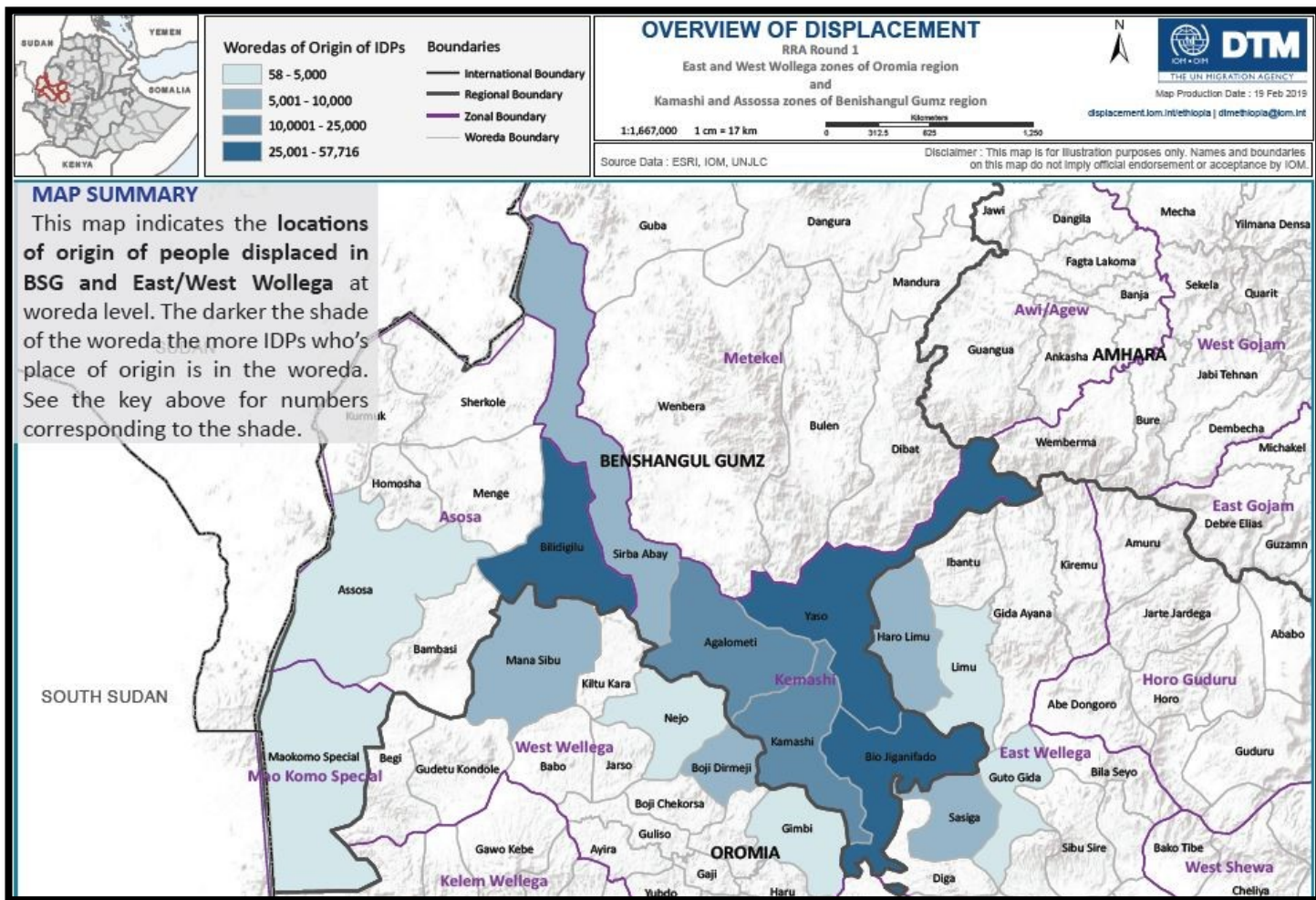
HEALTH

As part of IOM's Health support to affected populations, teams are providing psychosocial support through lay counselling, facilitating recreational activities, and increasing community awareness on mental health and positive coping mechanisms across the Wollegas. Additionally, IOM has launched mobile health and nutrition team (MHNTs) in East Wollega zone to address the critical gap in primary healthcare and nutrition services among displaced communities. They have conducted to date **1311 medical consultations** and 732 child malnutrition screenings. In addition, health teams are giving messaging on health promotion, sexual and reproductive health and HIV awareness through promotional sessions.



DISPLACED YOUTH PLAY VOLLEYBALL IN ANGER SITE, EAST WOLLEGA © IOM 2019/Z.HDIDOU





IOM emergency operations in response to the East and West Wollegas Crisis are generously supported by:



CONTACTS — IOM Emergency & Post Crisis

Ester Ruiz de Azua (Coordinator) ✉ eruzdeazua@iom.int

John Caccavale (Program Support) ✉ jcaccavale@iom.int

🌐 <http://www.iom.int/countries/ethiopia>