



© IOM 2015

Population density and environmental conditions in Freetown's seaports contribute to the potential spread of EVD

OVERVIEW

Since the Ebola outbreak in West Africa was first reported in March 2014, to date, there have been **27,748** confirmed probable and suspected cases of Ebola Virus Disease (EVD) with **11,279** fatalities (41%), according to the latest UNMEER report, IOM is continuing its Ebola response in West Africa, which aims to strengthen containment and control capacities to prevent the spread of EVD, reduce disease burden, while contributing to “getting to and maintaining zero cases, and building back better”.



© IOM 2015

CDC and IOM review the data collection forms and methodology at a Flow Monitoring Point in Liberia

HIGHLIGHTS

- IOM, CDC and WHO conducted a joint regional assessment mission from 7-17 July in **Mali, Sierra Leone, Guinea** and **Liberia** to identify best practices in mobility mapping and health border management.
- IOM continues to provide primary health services through mobile clinics in Bomi, Grand Bassa, and Grand Cape Mount counties in **Liberia**, resulting in **5,928** consultations completed.
- **414,332** travellers screened and sensitized, since the start of the project in November 2014 at **15** Flow Monitoring Points in **Mali**.
- **50** community leaders and traditional healers trained on EVD preparedness in the regions of Kolda and Kédougou in **Senegal**.
- **19** IOM monitors and **80** Passenger Welfare Organization staff deployed at **47** Village Crossing Points in Samu, Gbileh Dixon, and Bramaia chiefdoms in Kambia district, **Sierra Leone**.
- All office materials and equipment have been distributed and installed at three new PEOCs in Fria, Boké and Téliimélé in **Guinea**.
- **42** trainers from Government agencies undertook a Training of Trainers workshop in Koforidua, **Ghana**.



IOM, CDC, and WHO conduct a joint assessment of population mobility, community health event-based surveillance, and border management best practices at a fishing village in Fanti Town, Liberia

JOINT IOM/CDC/WHO ASSESSMENT OF MOBILE POPULATIONS AND BORDER MANAGEMENT IN WEST AFRICA

In response to the need to strengthen cross-border collaboration, support effective border management, and prevent the spread of Ebola within the region, from 7-17 July, IOM, the Centers for Disease Control and Prevention (CDC), and the World Health Organization (WHO) conducted a regional assessment mission to Mali, Guinea, Sierra Leone, Guinea and Liberia. The assessment team included representatives from the headquarters and national offices of CDC, WHO and IOM, as well as officials from Government agencies.

The mission sought to review approaches to mapping mobility patterns and health border management in order to identify good practices, challenges, risks and areas for possible improvement. In addition, the partners sought to review the three organizations' cross-border collaboration in order to identify specific areas for joint work and coordinate implementation. As such, the team gathered specific information on screening procedures, mobility tracking, health system referrals, social mobilization, community-based and national surveillance systems. A Joint IOM/CDC reference guideline delineating the principles and methodological approaches to mapping population mobility has been developed and is currently being reviewed.

SIERRA LEONE

Health & Humanitarian Border Management

In collaboration with the RSLAF, a total number of **21** roving monitors and **80** staff of the Passenger Welfare Organization (PAWEL) have successfully deployed at **47** crossing points in the three chiefdoms of Gbileh Dixon, Samu, and Bramaia. On an ideal working day, teams set out in pairs on off-road motor bikes to cover the terrain and distances between designated crossing points to promote EVD awareness, handwashing resupply, support border agents and capturing mobility pattern data.



Roving monitors set off on motorbikes to support remote border posts in Kambia district, Sierra Leone

A delegation from IOM Guinea met with the team from IOM Sierra Leone to share operational experiences and harmonize a common approach to cross-border interventions. The group visited HHBM operational areas and Flow Monitoring Points in Kambia and Port Loko and the sea ports in Freetown. Cross-border collaboration remains an area of critical intervention

between the two countries, especially in the districts of Kambia and Forécariah.

LIBERIA

Health and Humanitarian Border Management

In response to the recent outbreak in Margaribi, IOM expanded operations to provide support at additional county checkpoints, including infrastructure, screeners, training and supplies. During the reporting period IOM supported the activation of three checkpoints in Grand Bassa, as well as support to two checkpoints in Bomi, bordering Gbarpolu. IOM continues to provide support to six Points of Entry (PoE), one unofficial border crossing point and two checkpoints in Grand Cape Mount (GCM) County. IOM also provides operational support and mentorship to County Health Teams (CHT) and border screening in GCM.



IOM mentors Bureau of Immigration and Naturalization agents, registering travellers at the Flow Monitoring Point at Bo Waterside in Liberia

Orientation training to support border reopening processes has been ongoing throughout July for counties bordering Ivory Coast, namely Grand Gedeh, River Gee, and Maryland. Training provided by IOM, in coordination with Bureau of Immigration and Naturalization (BIN), targets border officials, providing sessions on health screening at borders with **105** screeners have been trained.

Social Mobilization & Community Outreach

Refresher trainings on EVD prevention and community preparedness were delivered by IOM to **90** general Community Health Volunteers (gCHVs), who then promote these messages within their communities. The sessions jointly facilitated by the CHTs, IOM, and UNICEF also included an analysis of the recent EVD confirmed cases in Margibi and Montserrado and lessons learned.

IOM and the CHTs from Grand Bassa and Grand Cape Mount conducted palava-hut meetings to reinforce EVD prevention messages amongst border communities, traditional and religious leaders. The awareness raising sessions reached **178** community members in Grand Cape Mount and **53** community leaders in Grand Bassa.

Health Systems Support & Revitalization

IOM is supporting County Health Teams in three counties to provide primary health services to communities through mobile clinics. In partnership with CHTs, IOM provides immunization, psychosocial support, reproductive health services, curative case services, family planning, and health education and triage at mobile clinics in Bomi (13), Grand Bassa (11) and GCM (13) with a total of **5,928** consultations.



IOM provides primary health services to communities at the mobile clinic in Grand Cape Mount in Liberia

To support CHT efforts to ensure vital infection prevention and control (IPC) measures are in place, as well as adequate WASH capacity, **29** health facilities were identified in Bomi (10), Grand Cape Mount (10) and Grand Bassa (nine) in preparation for renovation and construction of required triage, isolation and WASH facilities.

Lastly, in line with the back-to-school campaign, promoting IPC practices and a safe school environment, IOM is also providing WASH infrastructure upgrades at schools. Over the reporting period, IOM WASH teams partnered with county and district education officers to finalize assessments of WASH capacity in Grand Bassa, Grand Cape Mount, and Bomi, identifying construction needs in **20** additional schools. WASH assessments of schools in the three counties is now complete. A total of **60** schools have been identified for WASH upgrades and processes to provide materials are underway.



IOM staff from Guinea and Sierra Leone meet to discuss cross-border collaboration and harmonization of EVD interventions in Freetown, Sierra Leone

GUINEA

Health and Humanitarian Border Management: Flow Monitoring Points

As part of IOM's regional health border management strategy, IOM Guinea continues to carry out EVD awareness-raising activities to travellers and local communities in the sub-prefecture of Kintinian in Kourémalé prefecture. Since the start of the project, a total **45,251** persons have been recorded, monitored, and sensitized to EVD at three points of entry between Guinea and Mali in Kourémalé, Nafadji, and Niany.

A new FMP has been installed and made operational at in Pamalap, Forécariah district, Guinea on the Sierra Leone border for health screening of travellers. Furthermore, four health check points have also been installed and are operational in Dakhagbe and Layah with two at the Coyah-Forécariah highway. IOM Guinea has opened a sub office in Kankan to administer and monitor the FMPs on the Mali Border.

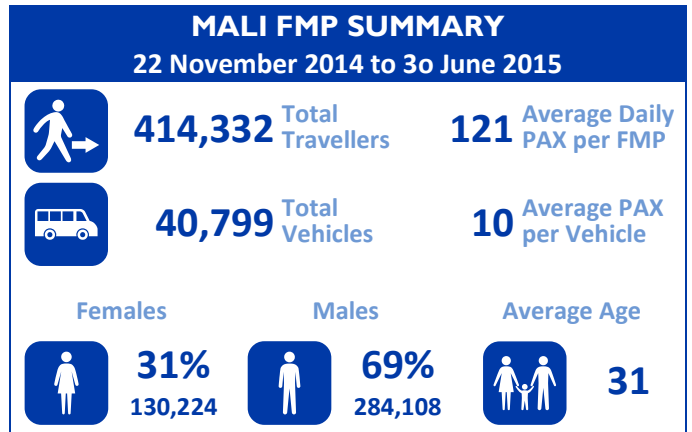
Provincial Emergency Operation Centres

IOM is providing logistical support to three new Prefectural Emergency Operational Centres (PEOCs) situated in Fria, Boké and Téli-mélé bringing to a total of **28** PEOCs, supported by IOM, nationwide. Rehabilitation works for the new PEOCs are ongoing in Fria and Boké.

MALI

Health and Humanitarian Border Management: Flow Monitoring Points

52,173 travellers were reached at all 15 FMPs during the month of June 2015, bringing the cumulative total to **414,332** persons recorded, since the start of the project in November 2014.



Social Mobilization & Community Outreach

IOM is supporting the Government of Mali by strengthening early warning systems and monitoring mechanisms and to identify suspected cases at Points of Entry in the rural communes of Faléa and Kéniéba. The goal is to involve grassroots communities in the response to EVD and strengthen warning mechanism to identify suspected cases of EVD in communities around gold mining sites. A pilot initiative is expected to cover **21** villages in the rural town of Faléa.



IOM engages and empowers border communities to strengthen EVD surveillance and response in Mali

CÔTE, D'IVOIRE

Health and Humanitarian Border Management

In partnership with the National Institute of Public Health (INHP), IOM has delivered infection prevention and control (IPC) and EVD preparedness and management training to **192** border police and customs agents, as well as **43** health agents at **18** border-crossing Points of Entry.

Furthermore, in close coordination with INHP and district health officials from Danané and Tabou, **30** health agents have been identified and trained to pilot cross-border epidemiologic data collection using smart phones. Ultimately, integrating evidence generated from mobility paradigm and element patterns with



IOM delivers IPC and EVD preparedness training to border officials in Ohidougou, Côte d'Ivoire

epidemiological data, in order to provide a more robust and effective public health interventions, communicable disease response, and border health interventions.

Social Mobilization & Community Outreach

Communities along borders continue to play an important role in the efforts to prevent, detect and respond to public health emergencies. Hence, IOM has conducted targeted trainings for community leaders, traditional practitioners, as well as community health agents from **32** villages. Training sessions were conducted in French and local languages to facilitate role play and interaction. Attendees are now in the process of mobilizing their communities, disseminating sensitization messages and implementing information flow and response procedures.

GHANA

Health and Humanitarian Border Management

In cooperation with Ghana Health Service's Port Health, IOM has trained **42** trainers from three government agencies. A three-day Training of Trainers took place in Koforidua from 15-17 July. The newly trained officials will now cascade the training they received to their peers in an effort to better prepare these frontline officers to include Ebola surveillance in their daily work. The training covered other communicable diseases, promoted basic hygiene and sanitation, and rolled out new Standard Operating Procedures (SOPs) for strengthened border health surveillance in Ghana.



Border officials receive IPC and preparedness training in a Training of Trainers session at Koforidua, Ghana

IOM is launching a series of trainings to build the capacity of border officials to conduct EVD screening and infection control procedures at borders. The trainings will take place from 30 July until the beginning of October 2015. The goal is to train **800** border officials from the Port Health Unit of Ghana Health Service, Ghana Immigration Service, and the Customs Division of Ghana Revenue Authority, based at eight points of entry across the country, including Tema and Takoradi Ports, Kotoka International Airport, as well as Elubo, Aflao, Paga, Hamile and Sampa.

SENEGAL

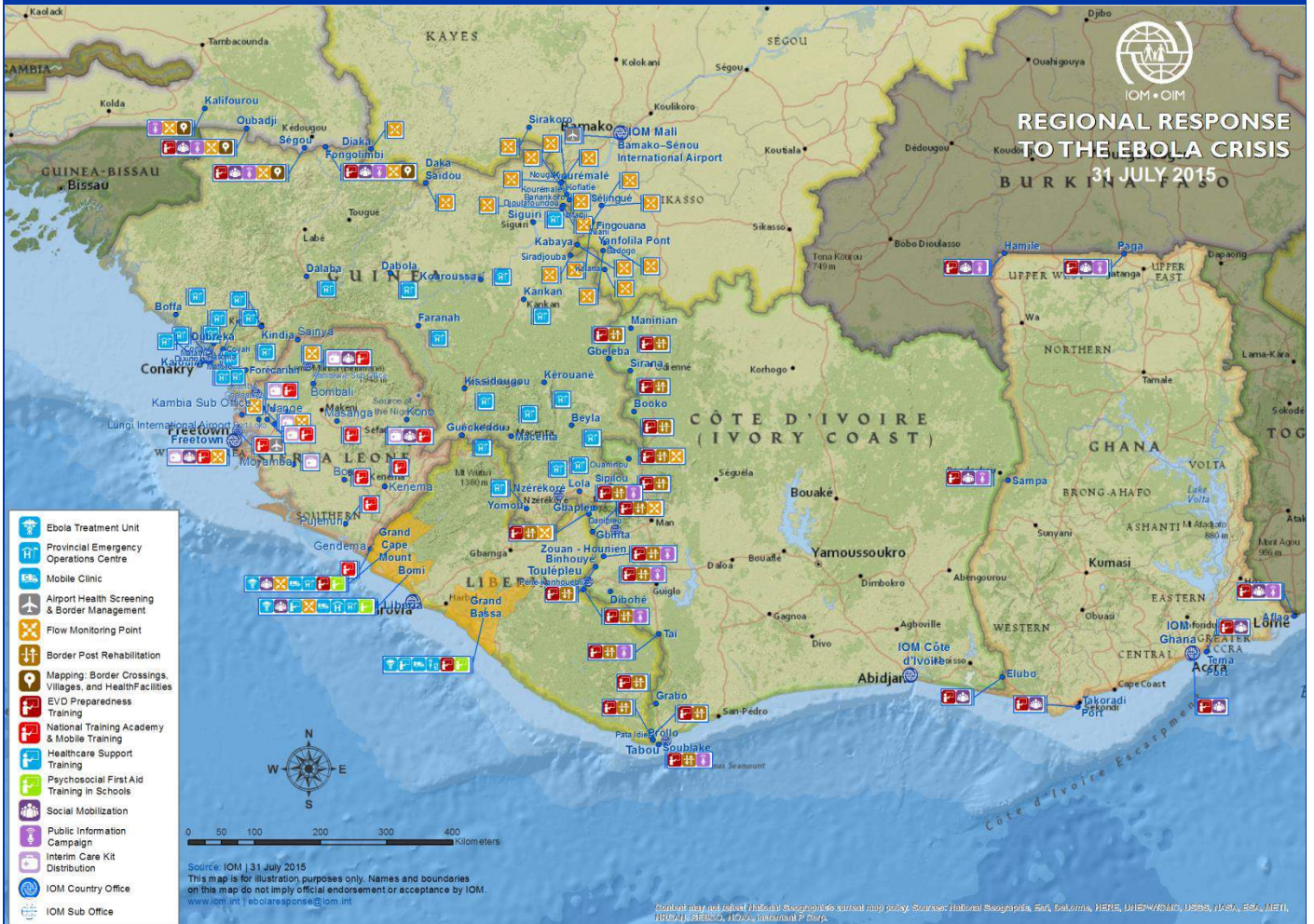
Health and Humanitarian Border Management

From 8-11 July, IOM held two training workshops on EVD preparedness. The objective of the workshops was to strengthen the capacity of participants on EVD symptoms, detection, modes of transmission, and prevention. A total of **50** people were trained, mainly community leaders and traditional healers. The workshops were conducted in the local languages of Pulaar and Mandinka to ensure better understanding of vital preparedness measures.



IOM delivers EVD awareness and preparedness training to community leaders in Kédougou, Senegal to strengthen local capacity to respond to EVD

IOM'S REGIONAL RESPONSE TO THE EBOLA CRISIS



Grand Cape Mount County, Liberia

Bomi County, Liberia

Grand Bassa County, Liberia



FUNDING FOR IOM'S EBOLA CRISIS RESPONSE PROGRAMME IN WEST AFRICA IS PROVIDED BY:



FOR MORE INFORMATION ON IOM'S EBOLA CRISIS RESPONSE PROGRAMME, PLEASE CONTACT:

IOM Ebola Crisis Response Programme Coordination Office, IOM HQs | ebolareponse@iom.int | +41 22 717 9111

Donor Relations Division, IOM HQs | drd@iom.int | +41 22 717 9271

IOM Regional Office, Dakar (Senegal) | rodakarebolacoordination@iom.int | +221 33 869 6200