



AFGHANISTAN EARTHQUAKE

INTERNATIONAL ORGANIZATION FOR MIGRATION

SITUATION REPORT • 30 October 2015



Highlights

A girl and her infant brother outside their damaged home in Jurm district, the earthquake's epicenter © IOM 2015

- A 7.5 magnitude earthquake centred in northeastern Afghanistan struck on 26 October, causing significant damage and casualties across Afghanistan, Pakistan and India.
- The Afghan government estimates that approximately 6,900 families have been affected by the earthquake, with 84 individuals killed and 394 injured. This estimate is subject to change as more areas are accessed.
- IOM has so far completed assessments in 40 districts, and aid distributions are underway for affected families in several provinces.

Situation Overview

A 7.5 magnitude earthquake centered in Jurm district in northeastern Afghanistan's Badakhshan province struck on the afternoon of 26 October, and was felt across the region. Initial reports indicate damaged homes and potential casualties across northern, central and eastern Afghanistan, impacting 13 provinces (102 districts) in total. Badakhshan, Nangarhar, Kunar and Nooristan provinces are the most affected. Approximately 6,900 families are estimated to have been affected by the earthquake, with 84 individuals killed and 394 injured.

Assessments have been completed in 40 districts and the distribution of relief items is underway for eligible families. IOM distributed relief items to 175 families in Kunar and Laghman provinces on 30 October. Assessments are ongoing, with the majority expected to conclude by 1 November.

The main needs of the affected population are basic household supplies, blankets, tents, hygiene kits and shelters for those whose houses have been completely destroyed. Access in some of the affected areas remains a challenge due to difficult terrain and security concerns.

Support for IOM's natural disaster response operations is provided by USAID's Office of U.S. Foreign Disaster Assistance and the Government of Japan.

CONTACTS

IOM Afghanistan

+93.794.100.546

[✉ iomkابل@iom.int](mailto:iomkابل@iom.int)

[✉ media@iom.int](mailto:media@iom.int)

[🌐 http://afghanistan.iom.int/](http://afghanistan.iom.int/)

IOM RESPONSE

East Region

Kunar

Thirty-five people have reportedly been killed and 113 injured, with many families losing their shelters, household items and food stocks. Initial reports suggest 1,264 families affected in 15 districts. Joint assessment teams consisting of IOM, WFP, ANDMA, ARCS, RRD, IMC, NRC and DRC are assessing the impact and identifying the immediate needs of the affected families. So far, 325 families have been identified in 13 districts, while assessments in the remaining villages are ongoing. IOM distributed NFIs, emergency shelter and solar lanterns to 65 families in Wata Pur district on 30 November.

Nooristan

Initial reports collected through provincial and district authorities indicate 813 families affected, with six persons killed and 76 injured in eight districts. A joint assessment was initiated by IOM, IMC, ARCS and WFP on 28 October. Eighty-six families have been verified as in need of relief items. Some of the affected families have already received assistance.

Access and communication to Kamdesh and Barge Matal districts remains a challenge due to security concerns and difficult terrain. IMC, though its basic and central health clinics, will be conducting assessments in these two districts. The initial reports also suggest damage to public infrastructure including schools, clinics, government facilities as well as livelihood means.

Access to Dawab and Mandol districts was not possible through Nooristan center (Parun). The joint team (IOM and IMC) had to take an alternate route through Laghman province to access these districts. Security and transportation obstacles resulted in delayed assessment.

Laghman

Initial reports indicate 254 families affected, with six persons killed and 25 injured in five districts. Joint assessment teams consisting of IOM, WFP, ANDMA, RRD, IRC, DRC, DoRR and DoAIL initiated assessments on 28 October.

So far, 239 families have been identified as in need as assistance in Ali Shang, Alingar, Dawlatshah, Qarghy and Mehtarlam districts by joint assessment teams consisting of IOM, IRC, ARCS and RRD. IOM distributed NFIs, family tents and solar lanterns to 110 families in Wata Pur district on 30 November.

Nangarhar

Initial reports indicate 1,426 families affected, with 23 persons killed and 103 individuals injured in 16 districts. A joint assessment team consisting of IOM, WFP, SCI, ARCS, NRC, IMC, DRC, NRC, RRD, ANDMA, and Bayat Foundation initiated joint assessments on 28 October.

So far, 644 families have been verified by joint assessment teams in 13 affected districts. ARCS and RRD distributed relief

items in Rodat, Behsood and Batikot districts. Security constraints exist in Mohmand Dara, Dur Baba and Gushta districts, delaying assessments in some of the affected villages. Baswal village in Mohmand Dara district is currently inaccessible.



Central Region

Kabul

As per the initial information from stakeholders, no severe damage to houses in Kabul city was reported. However, there are reports of casualties and damage in Deh Sabz and Bagrami districts.

IOM is conducting assessments with partners in Parwan, Kapisa and Panjshir provinces, and will initiate assessments in Kabul when the assessments in the abovementioned provinces conclude.

Parwan

Initial reports indicate 565 families affected and two killed in eight districts. Joint assessment teams comprised of IOM, CARE, IDSH/WFP, ARCS, ANDMA and DRC initiated assessments on 27 October in the affected districts. Assessments in all districts have been concluded, with 371 families confirmed to be affected in need of relief items. Distributions are planned on 1 November.

Panjshir

One hundred and sixty-eight families were reportedly affected and four persons injured in five districts. Joint assessment teams consisting of IOM, CARE, ARCS, IDSH/WFP, ANDMA and DRC were deployed to the affected districts on 28 October. The assessments in these five districts have been completed, and 302 families were found to be affected. There are also reports of damage in Rokha, Anaba and Shutul districts. The joint assessment team will visit these districts on 31 October.

Kapisa

Initial reports indicate 125 families affected in Nijrab district. A joint assessment team consisting of IOM, ARCS, ANDMA, DoRR, RRD and IDSH/WFP initiated assessment on 29 October. So far, 53 families have been found to be affected. Assessment activities will continue on 31 October.

Northeast Region

Badakhshan

Initial reports indicate around 1,900 families affected, with seven persons killed and six injured in 17 villages. Joint assessment teams comprised of IOM, WFP, ANDMA, FOCUS, AfghanAid, NAC, CAF, ARCS, AKF, COAR, CONCERN and ROPANI initiated assessments on 28 October. So far, 1,742 families have been found to be affected. Assessments in Ishkashim, Yawan, Shuhada, Khash, Argo and Arghanj Khawa districts have concluded, and relief items have been distributed to some families.

Assessments of Such Bala, Payan and Deh Bala Farghamanj villages in Jurm district, the epicenter of the earthquake, are complete, in while assessments are ongoing in Eeskan, Khostak and Jurm center villages by ARCS, as these villages are insecure. Access and communication in Wardoj and Raghitan districts remains a challenge due to security concerns and ongoing conflict.

Baghlan

Initial reports indicate 392 families affected and 18 persons injured in nine districts. Joint assessment teams comprised of IOM, ANDMA, FOCUS, WFP and ARCS initiated assessment on 27 October. Assessments in seven districts have been completed, while the assessments in Andaraba and Firing districts are ongoing. A total of 954 families were found to be affected and in need of food, hygiene kits and shelter.

Takhar

Initial reports indicate 196 families affected, with four killed and 40 injured in seven districts. A joint assessment team consisting of ANDMA, ACTED, Mission East, WFP, PAT and ARCS initiated assessment on 27 October. So far, 237 families were found to be affected, with assessments in the affected districts ongoing. IOM deployed field staff to Takhar to assist ANDMA and joint teams with assessment and coordination.



Damage in Jurm district, Badakhshan, the earthquake's epicenter © IOM 2015

Southeast Region

Paktia, Ghazni and Khost

According to initial reports, 47 families are affected in three provinces. A joint assessment team consisting of IOM, IRC, ANDMA, CARE, PIN, ARCS and DoA initiated assessment on 28 October. So far, 43 families were found to be affected, with assessments in some districts ongoing.

IOM natural disaster response operations are supported by:





IOM International Organization for Migration
سازمان بین المللی مهاجرت
د مهاجرت نړیوال سازمان

IOM-Humanitarian Assistance Programme (HAP)

Stock Update Countrywide (30 Oct 2015)

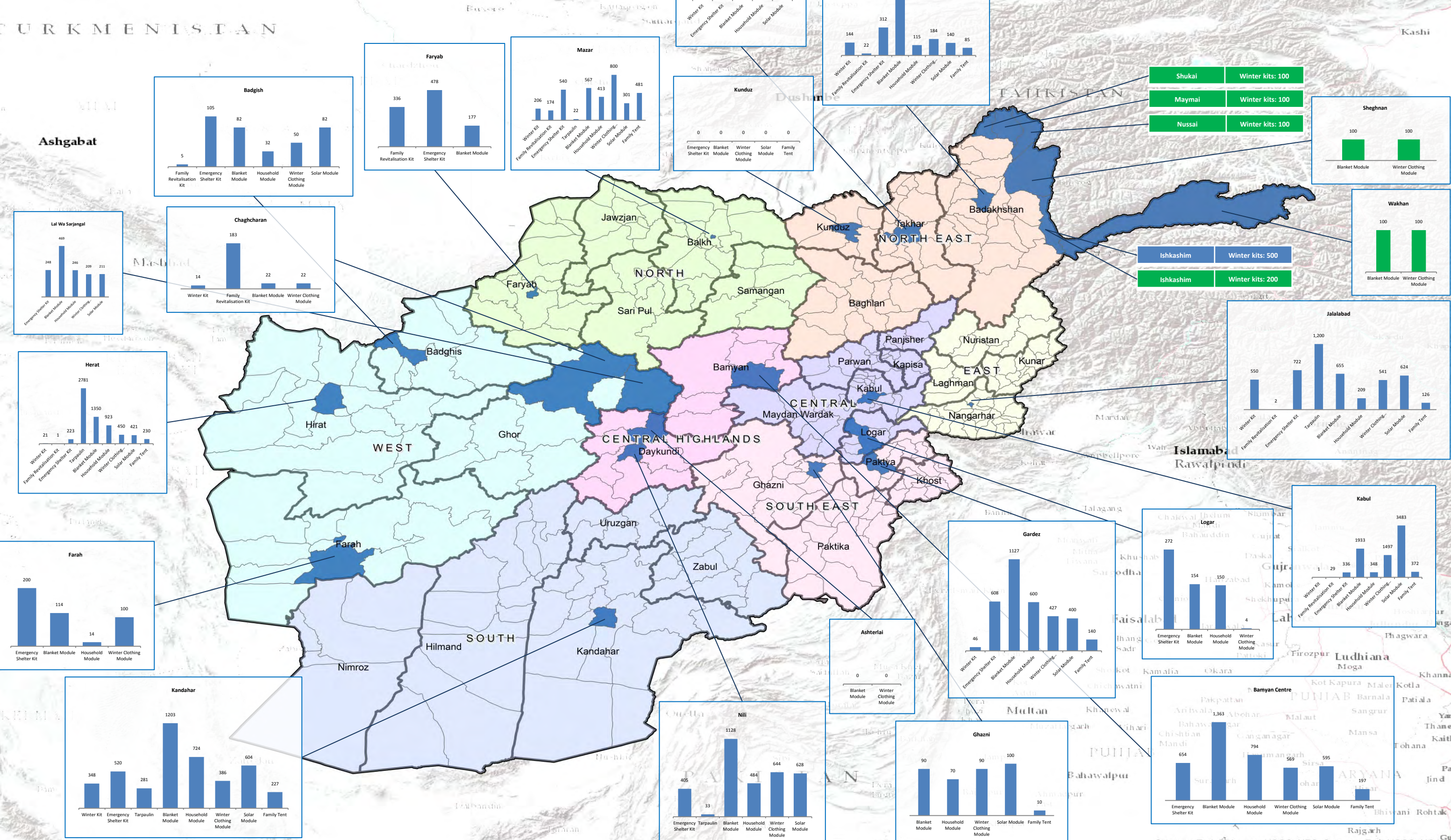
Region	Warehouse	Winter Kit	Family Revitalisation Kit	Emergency Shelter Kit	Tarpaulin	Blanket Module	Household Module	Winter Clothing Module	Solar Module	Family Tent
Central	Kabul	1	29	336	0	1,933	348	1,497	3,483	372
	Logar	0	0	272	0	154	150	4	0	0
Total		1	29	608	0	2,087	498	1,501	3,483	372
Central Highland	Bamyan Centre	0	0	654	0	1,363	794	569	595	197
	Daikundi-Nilli	0	0	405	33	1,128	484	644	628	0
	Daikundi Ashterlai	0	0	0	0	0	0	0	0	0
	Lal Wa Sare Jungle	0	0	248	0	469	246	209	211	0
Total		0	0	1,307	33	2,960	1,524	1,422	1,434	197
Northeast	Badakshan-Faizabad	144	22	312	0	797	115	184	140	85
	BDK-Ishkashim-FOCUS	200	0	0	0	0	0	0	0	0
	BDK-Wakhan-FOCUS	0	0	0	0	100	0	100	0	0
	BDK-Sheghnan-FOCUS	0	0	0	0	100	0	100	0	0
	BDK-Shukai-FOCUS	100	0	0	0	0	0	0	0	0
	BDK-Nussai-FOCUS	100	0	0	0	0	0	0	0	0
	BDK-Maymai-FOCUS	100	0	0	0	0	0	0	0	0
	Badakshan-Ishkashim	500	0	0	0	0	0	0	0	0
	Kunduz	0	0	0	0	0	0	0	0	0
	Takhar-Taloqan	586	0	200	0	295	140	0	182	0
Total		1,730	22	512	0	1,292	255	384	322	85
Southeast	Ghazni	0	0	0	0	90	70	90	100	10
	Paktia-Gardez	46	0	608	0	1,127	600	427	400	140
Total		46	0	608	0	1,217	670	517	500	150
West	Herat	21	1	223	2,781	1,350	923	450	421	230
	Ghor-Chaghcharan	14	183	0	0	22	0	22	0	0
	Farah	0	0	200	0	114	14	100	0	0
	Badgish	0	5	105	0	82	32	50	82	0
Total		35	189	528	2,781	1,568	969	622	503	230
East	Jalalabad	550	2	722	1,200	655	209	541	624	126
Total		550	2	722	1,200	655	209	541	624	126
North	Mazar	206	174	540	22	567	413	800	301	481
	Faryab	0	336	478	0	177	0	0	0	0
Total		206	510	1,018	22	744	413	800	301	481
South	Kandahar	348	0	520	281	1,203	724	386	604	227
Total		348	0	520	281	1,203	724	386	604	227
Grand Total		2,916	752	5,823	4,317	11,726	5,262	6,173	7,771	1,868

AFGHANISTAN IOM Humanitarian Assistance Program (HAP) Stock update at 29 October 2015 – by District

Disclaimer and Source: Data is sourced from IOM Humanitarian Assistance Database (HADB). This map is compiled by IIMAP. Datum/Projection: WGS84/Geographic. Date created: 29/10/2015
 IIMAP in Afghanistan is funded by The United States Agency for International Development (USAID)/ Office of U.S. Foreign Disaster Assistance (OFDA). The data, boundaries and names and the designations used on this map do not imply official endorsement or acceptance by IIMAP or USAID/OFDA. All information is the best available at the time this map was produced. For copies or information regarding specific data sources and methodology: Afghanistan@immap.org

Legend

- District with IOM warehouse presence
- Warehouse managed by FOCUS



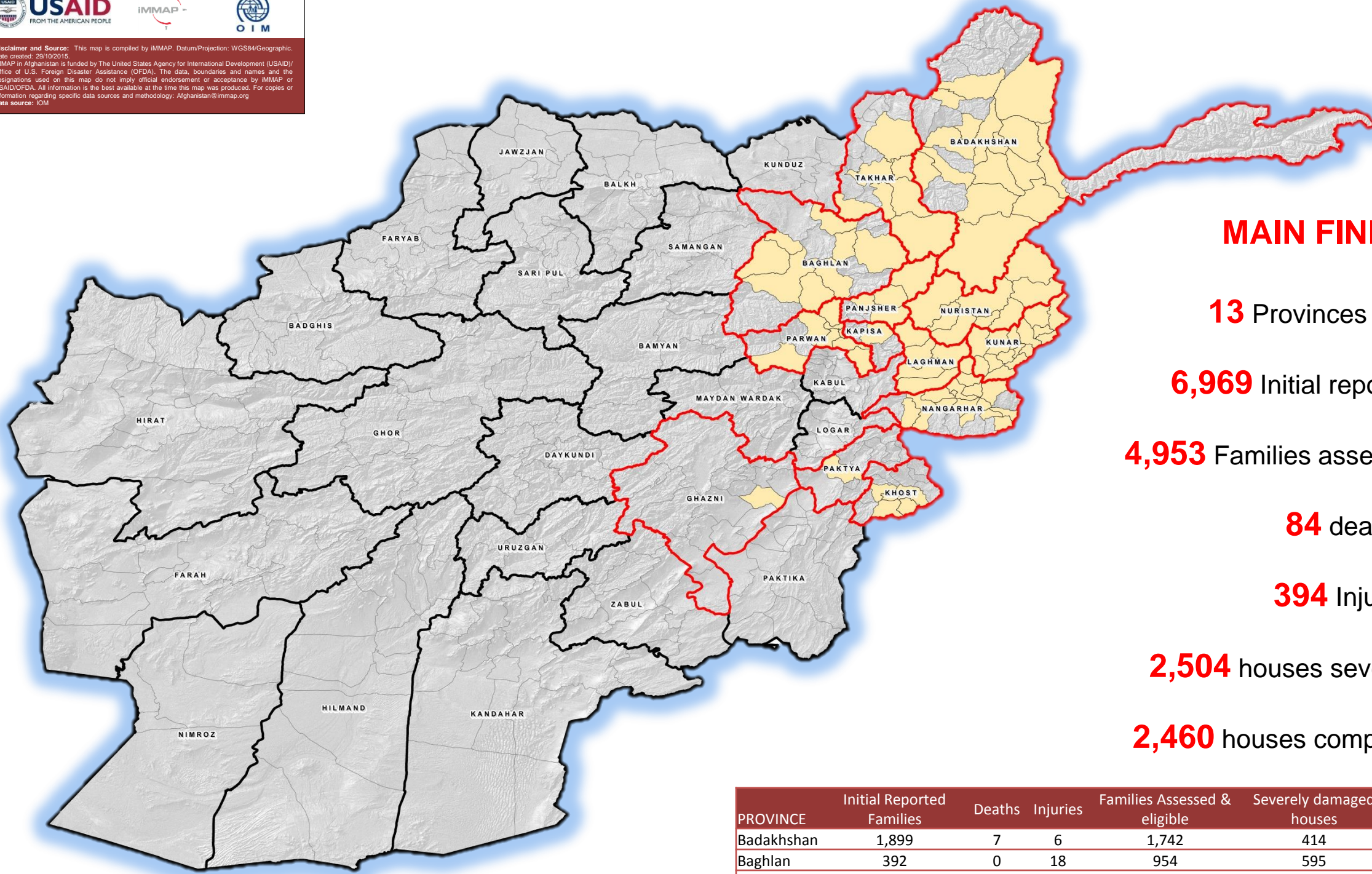
Sources: Esri, DeLorme, USGS, NRS, Sources: Esri, USGS, NOAA

USAID
FROM THE AMERICAN PEOPLE

IOM
O I M

IMMAP

Disclaimer and Source: This map is compiled by IMMAP. Datum/Projection: WGS84/Geographic. Date created: 29/10/2015. IMMAP in Afghanistan is funded by The United States Agency for International Development (USAID)/ Office of U.S. Foreign Disaster Assistance (OFDA). The data, boundaries and names and the designations used on this map do not imply official endorsement or acceptance by IMMAP or USAID/OFDA. All information is the best available at the time this map was produced. For copies or information regarding specific data sources and methodology: Afghanistan@immap.org Data source: IOM



MAIN FINDINGS

- 13** Provinces assessed
- 6,969** Initial reported families
- 4,953** Families assessed and eligible
- 84** deaths
- 394** Injuries
- 2,504** houses severely damaged
- 2,460** houses completely destroyed

LEGEND

- Province assessed**
- Badakhshan
 - Nangarhar
 - Parwan
 - Khost
 - Baghlan
 - Nuristan
 - Takhar
 - Ghazni
 - Paktya
 - Kunar
 - Kapisa
 - Panjsher
 - Laghman
- District assessed**

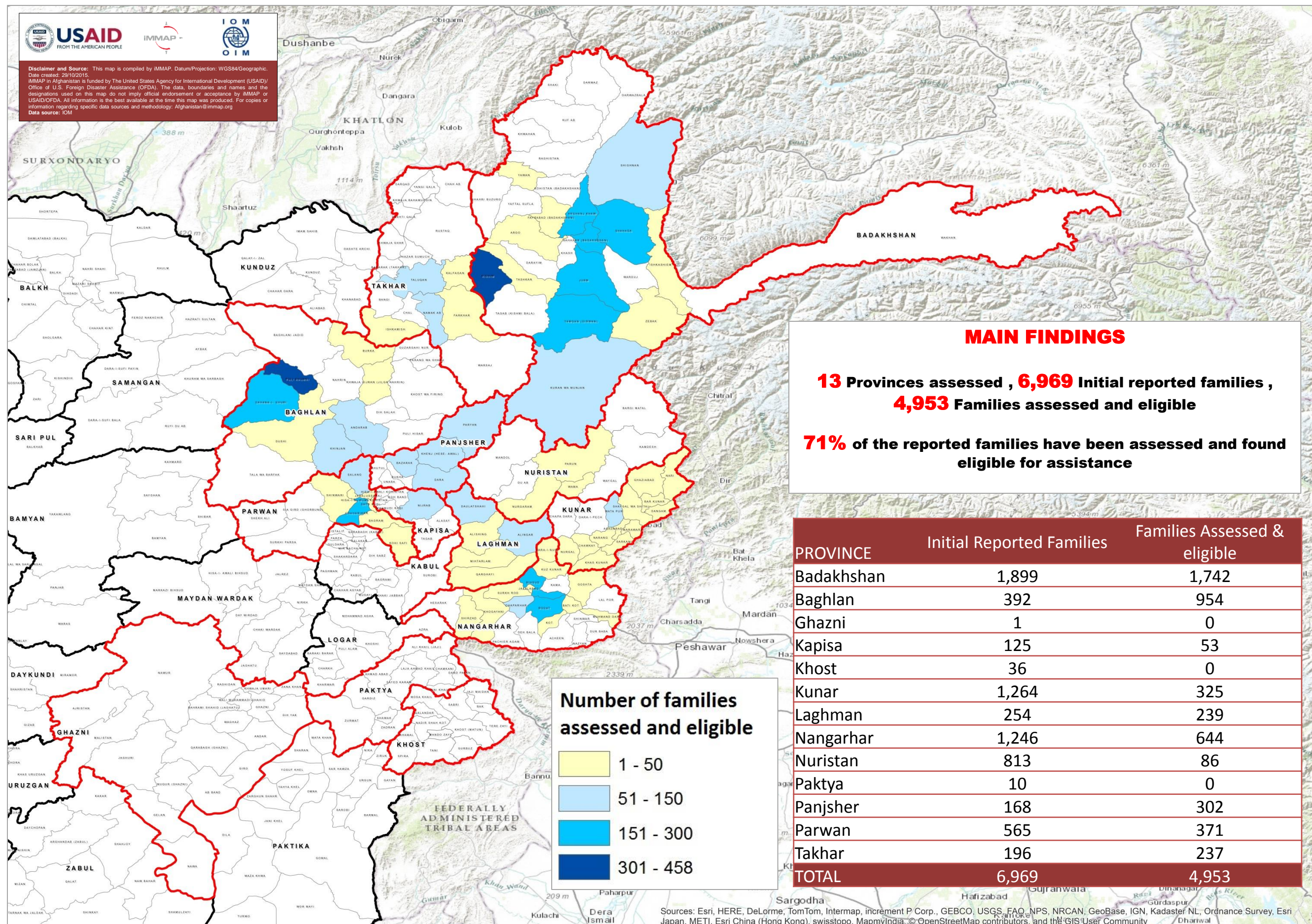
PROVINCE	Initial Reported Families	Deaths	Injuries	Families Assessed & eligible	Severely damaged houses	Completely destroyed houses
Badakhshan	1,899	7	6	1,742	414	1,306
Baghlan	392	0	18	954	595	359
Ghazni	1	1	0	0	1	0
Kapisa	125	0	0	53	28	25
Khost	36	0	7	0	29	7
Kunar	1,264	35	113	325	291	34
Laghman	254	6	25	239	149	90
Nangarhar	1,246	23	103	644	362	282
Nuristan	813	6	76	86	51	35
Paktya	10	0	2	0	5	1
Panjsher	168	0	4	302	172	130
Parwan	565	2	0	371	217	144
Takhar	196	4	40	237	190	47
TOTAL	6,969	84	394	4,953	2,504	2,460

USAID
FROM THE AMERICAN PEOPLE

IMMAP

IOM
O I M

Disclaimer and Source: This map is compiled by IMMAP. Datum/Projection: WGS84/Geographic. Date created: 29/10/2015. IMMAP in Afghanistan is funded by The United States Agency for International Development (USAID)/ Office of U.S. Foreign Disaster Assistance (OFDA). The data, boundaries and names and the designations used on this map do not imply official endorsement or acceptance by IMMAP or USAID/OFDA. All information is the best available at the time this map was produced. For copies or information regarding specific data sources and methodology: Afghanistan@immap.org Data source: IOM



MAIN FINDINGS

13 Provinces assessed , **6,969** Initial reported families ,
4,953 Families assessed and eligible

71% of the reported families have been assessed and found eligible for assistance

PROVINCE	Initial Reported Families	Families Assessed & eligible
Badakhshan	1,899	1,742
Baghlan	392	954
Ghazni	1	0
Kapisa	125	53
Khost	36	0
Kunar	1,264	325
Laghman	254	239
Nangarhar	1,246	644
Nuristan	813	86
Paktya	10	0
Panjsher	168	302
Parwan	565	371
Takhar	196	237
TOTAL	6,969	4,953

Number of families assessed and eligible

- 1 - 50
- 51 - 150
- 151 - 300
- 301 - 458

Sources: Esri, HERE, DeLorme, TomTom, Intermap, increment P Corp., GEBCO, USGS, FAO, NPS, NRCAN, GeoBase, IGN, Kadaster NL, Ordnance Survey, Esri Japan, METI, Esri China (Hong Kong), swisstopo, MapmyIndia, © OpenStreetMap contributors, and the GIS User Community