



IOM Shelter and Settlements 2017 Highlights

July 2018



New arrivals carry their belonging and IOM shelter kits to areas where they can build their shelters. Cox's Bazar, Bangladesh, © O. Headon, IOM 2017

The International Organization for Migration (IOM) has played a major role in humanitarian shelter operations for many decades. IOM's unique position as an intergovernmental organization allows it to work at scale in **both natural disasters and conflict/complex contexts**. IOM works in both operations and coordination, and plays a strong role working with partners in support of national authorities. IOM's overall objectives in shelter and settlements are 1) to focus on quality and scale of operations, 2) to be people-centred and context-driven, 3) to continue supporting interagency shelter coordination, 4) to support sectoral learning and identification of best practices and 5) to maintain a long term view in its responses.

Over the course of 2017, IOM's Shelter and NFI programmes **reached over 5.2 million crisis-affected individuals**, in 49 countries. Additionally, IOM had a significant coordination role in **25 shelter country coordination mechanisms**.

IOM Shelter and Settlements in 2017



Total Households Assisted in 2017

995,543



Estimated Total* Individuals assisted

5,209,014

Households reached with non-food items**
NFI 950,043



Newly built shelters

53,400



Shelter repairs and upgrades

45,330



Total family tents set up

27,989



Households assisted with cash transfers***

26,808



Individuals who received Shelter trainings

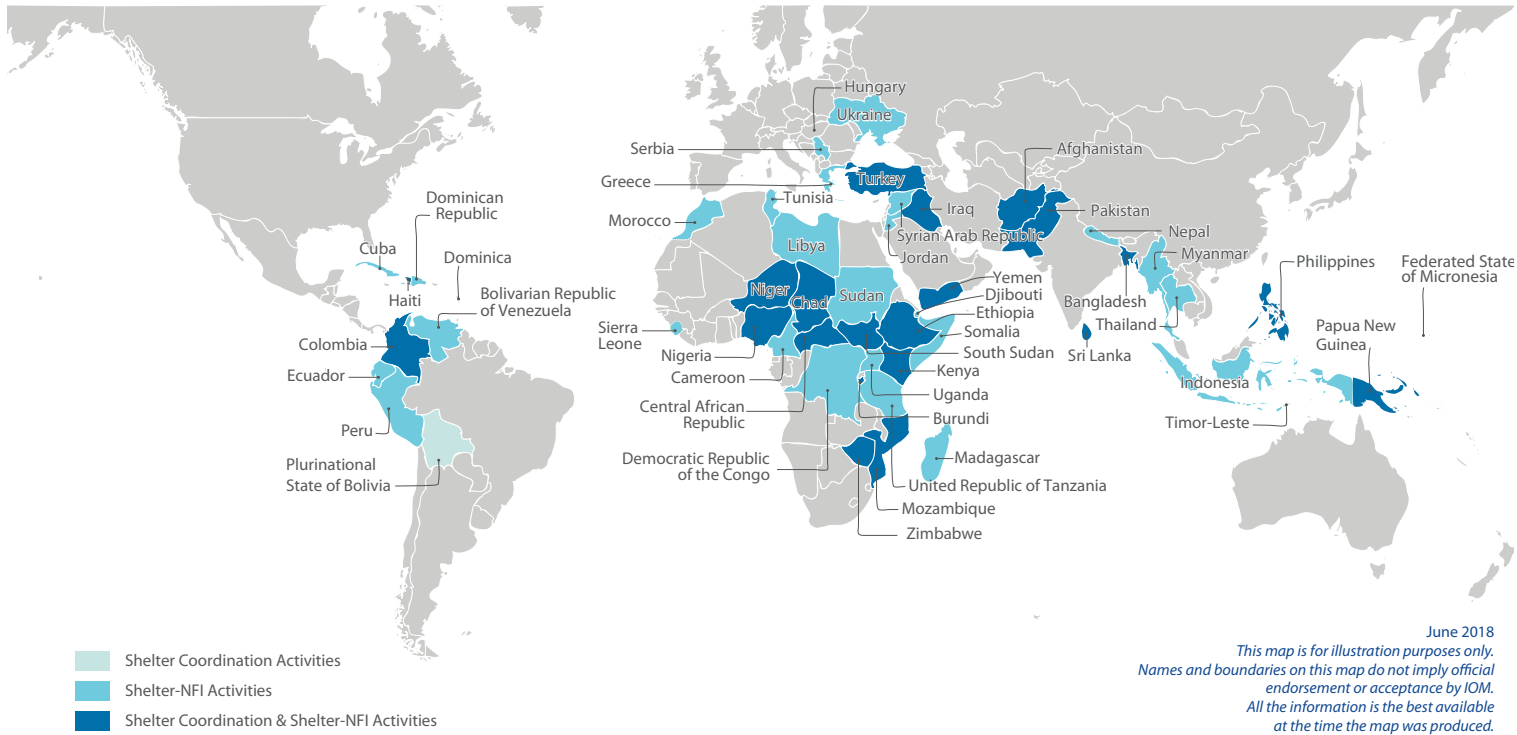
11,231

* Individual beneficiaries are estimated based on average household size by country; number includes common pipeline support

** Includes shelter materials and household items; number includes common pipeline support

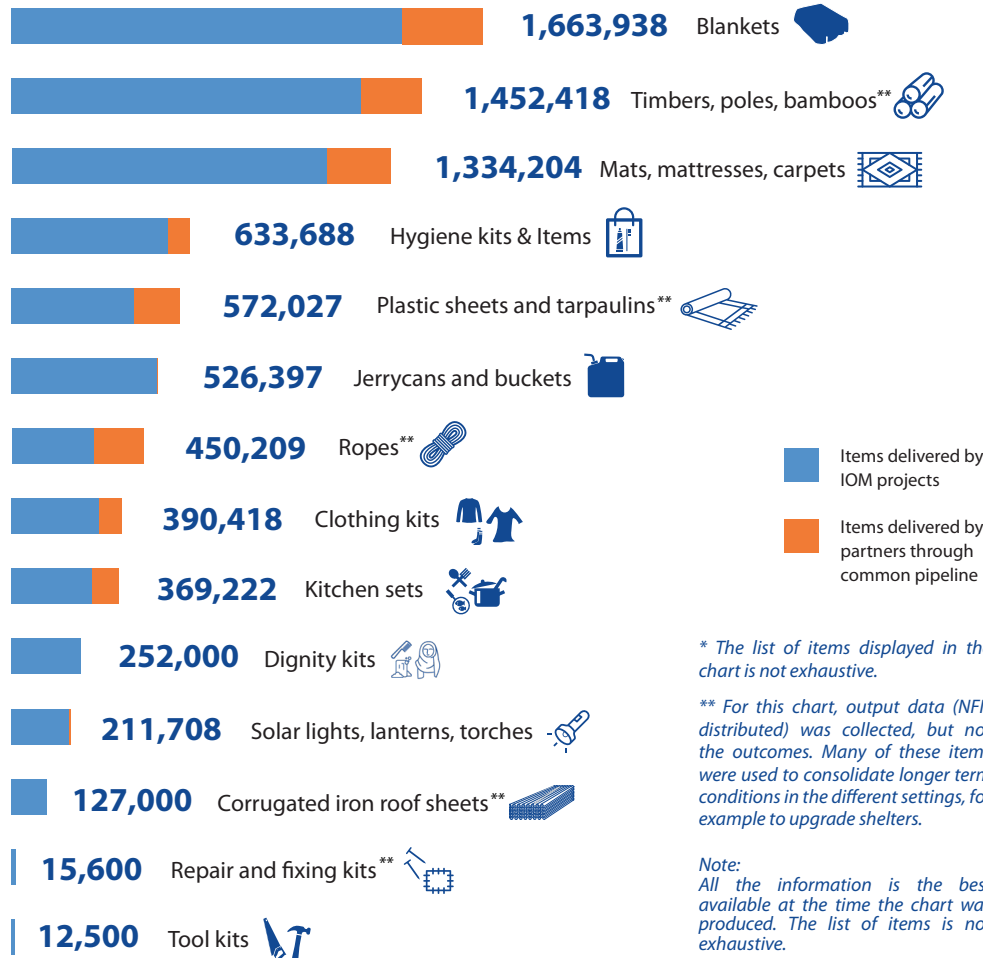
*** Only including cash transfers related to shelter/NFI activities

IOM's role in shelter activities around the World (2017)



Breakdown of the NFIs delivered by IOM in 2017

Overall in 2017, IOM distributed a variety of non-food items* (including kits) to affected populations.

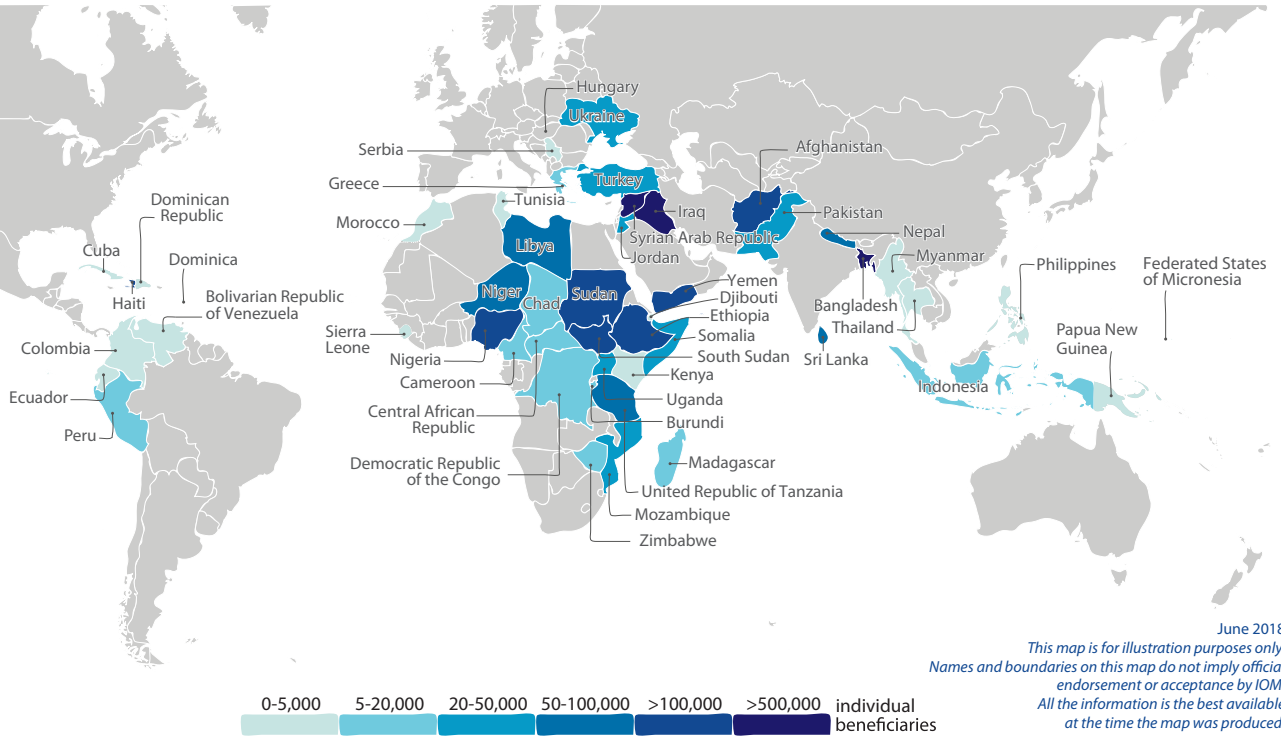


NFIs delivered by partners through IOM pipelines in 2017



Icons from the Noun Project: J. Caserta, V. Design, L. Canivet, S. Martin, G. Tagliente, G. Knoll, T. Peker, D. Santos, D. Santos, A. Gazzellini, J. Zoe, M. Bennett, F. Coelho, R. Médard, D. Hetteix, Creative Stall, M. Nardella, Parkjusun, S. Levin, H. Alberto Gongora, L. Prado, B. Davis, G. Oksiuta

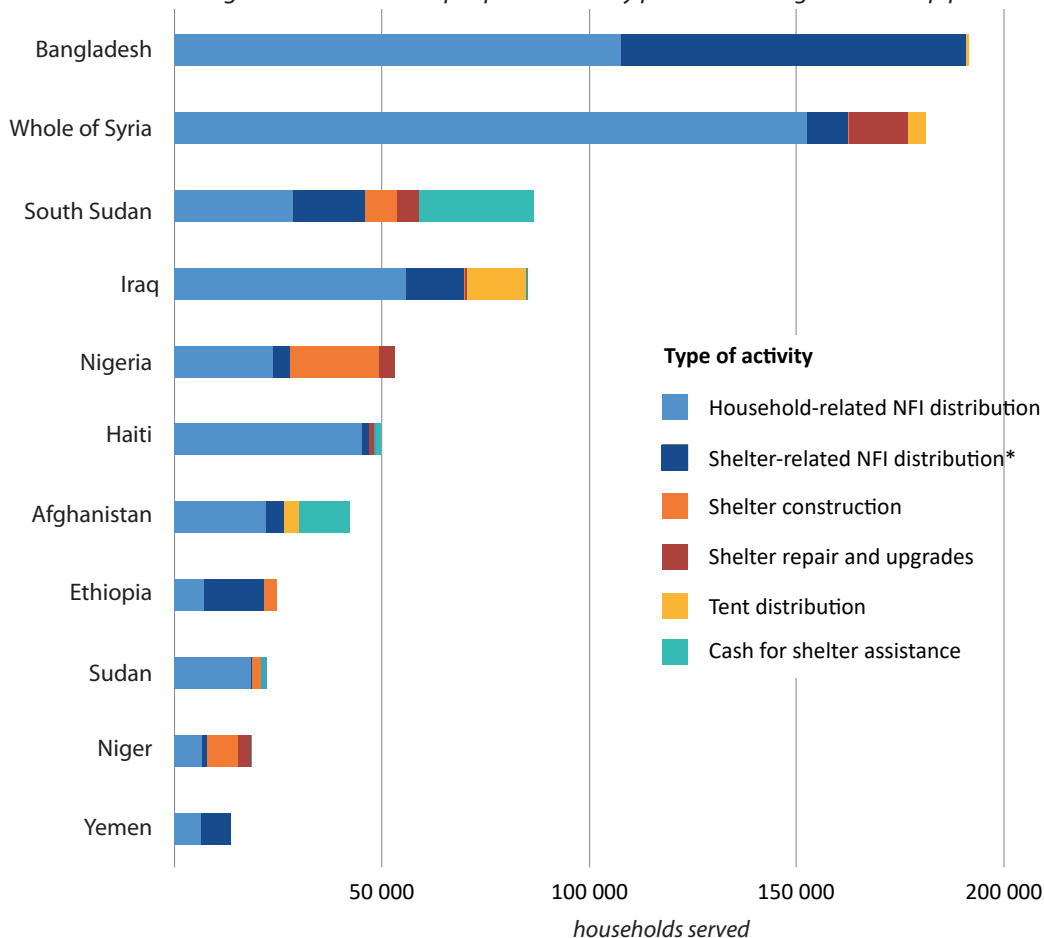
Estimated number of beneficiaries in IOM operations (2017)



Breakdown of Shelter-NFI activities for IOM largest operations

This chart shows how IOM Shelter activities vary depending on each operation, due mainly to the different stage of the response and the context (e.g. conflict, natural disaster, complex crisis).

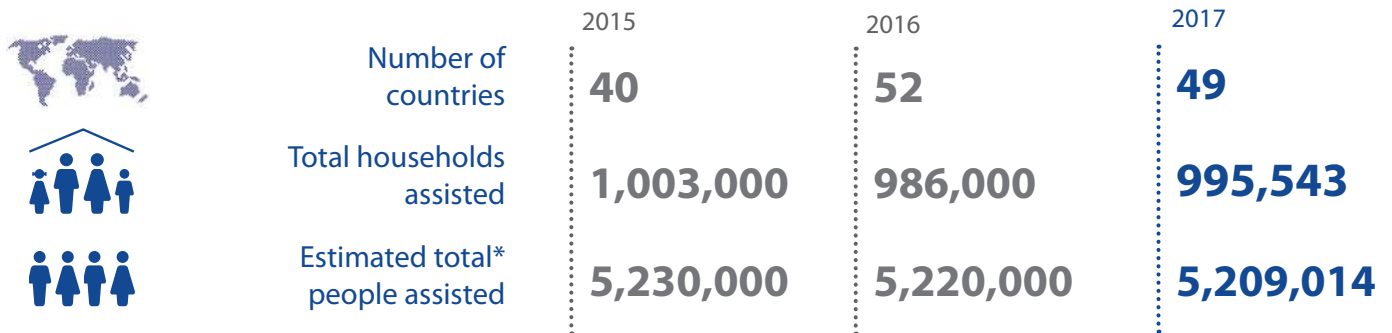
Note: the total number of individuals assisted is not a direct addition of all the activities, as some individuals receive multiple kinds of assistance. These figures do not include people assisted by partners through common pipelines.



* For this chart, output data (NFIs distributed) was collected, but not the outcomes. Many of these items were used to consolidate longer term conditions in the different settings, for example to upgrade shelters.

** Shelter trainings are provided to individuals, usually one per household.

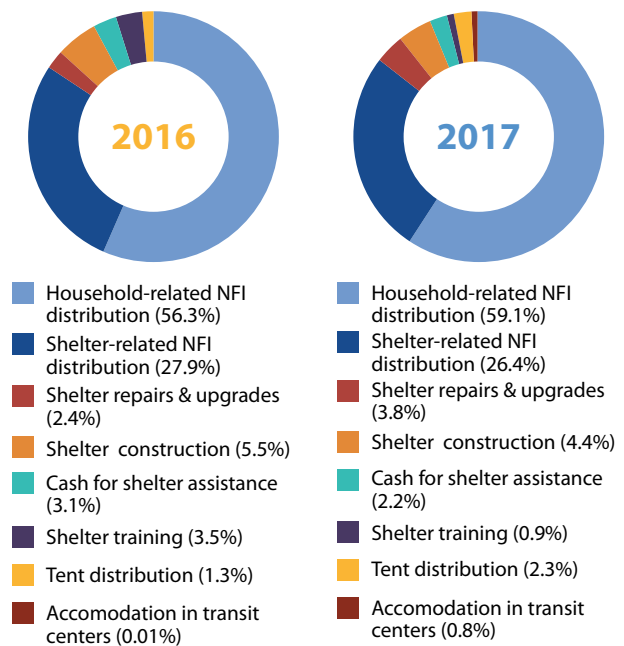
Evolution of key figures in IOM Shelter-NFI activities (2015-2017)



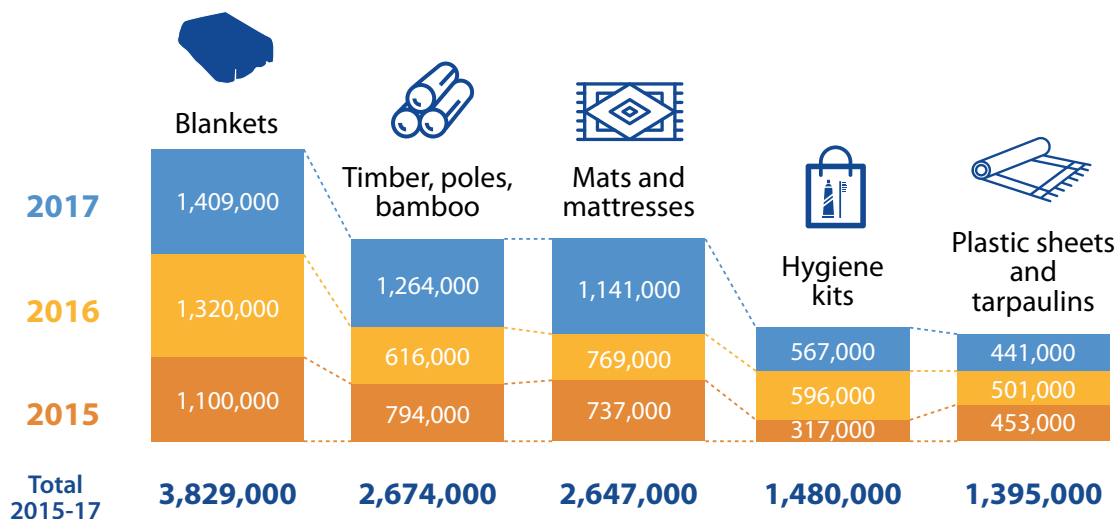
* Individual beneficiaries are estimated based on average household size by country. Figures include number of people assisted through common pipelines.

Over the course of 2017, IOM's shelter and NFI operations reached over 5.2 million people across 49 countries, the majority of which were in contexts where a shelter/NFI cluster was formally activated (visit www.sheltercluster.org). IOM remains one of the largest sheltering agencies worldwide, supporting one third of people assisted by the Shelter Cluster globally. As per global shelter assistance reported by all agencies, there was a reduction in the scale of shelter responses compared to previous years.

Breakdown of IOM Shelter-NFI activities from 2016 to 2017



Total items delivered to beneficiaries from 2015 to 2017 for the top five items directly distributed by IOM**



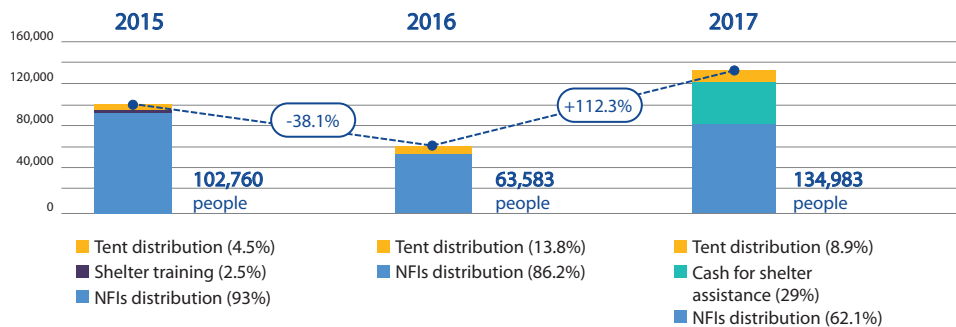
** Figures for this chart do not include common pipeline numbers



Shelter under construction in an IDP camp in Gwoza, Borno State, Nigeria © J. Burpee, IOM 2017

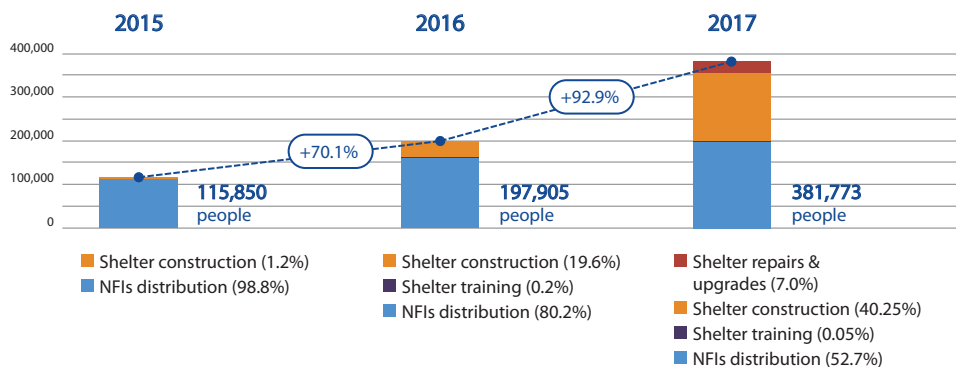
Evolution of IOM Shelter-NFI (2015-2017) activities in selected countries

Afghanistan (Returnee Response)



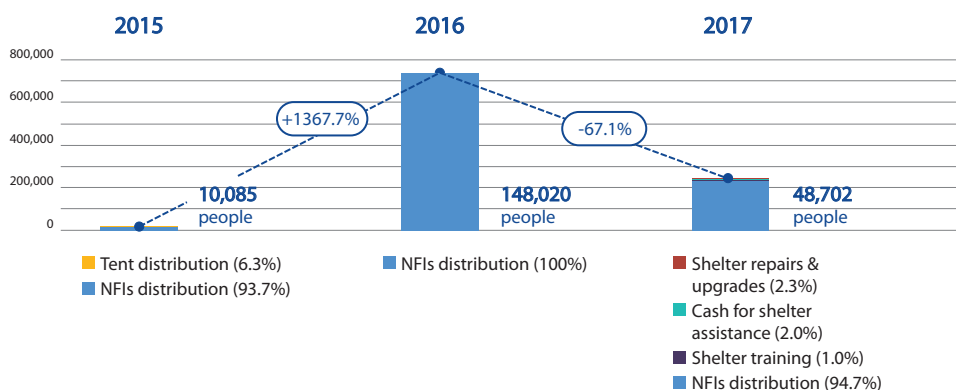
Humanitarian Assistance Programme (HAP) works with the government to respond to natural disasters. IOM also supports returnees from Pakistan. In 2017 IOM launched significant Cash for shelter assistance programs.

Nigeria (Armed Conflict Response)



Violence and armed conflict in Nigeria led to continuous flows of displacement within the country. IOM's activities and capacity have been increasing in the country over the past years.

Haiti (Natural Disaster Response)



IOM's Shelter-NFI activities significantly increased in 2016, mainly in response to the situation caused by Hurricane Matthew. IOM continues to respond and also prepositions items in preparedness.

Country Updates

BANGLADESH - Rohingya response

Since 25 August 2017, an estimated 655,000 Rohingya (as of December 2017) fled over the border from Myanmar into Bangladesh in response to intercommunal violence, overwhelming the existing settlements around Cox's Bazar. IOM has worked closely with the Government of Bangladesh and the humanitarian community both as sector lead for Shelter/NFI, and in operations, to respond at scale.

Since the beginning of the crisis, IOM has reached over 120,000 households with emergency shelter and essential household items, including plastic sheets, bamboo, blankets, floor mats, kitchen sets, and solar lights. Prior to distribution, all the recipients were provided with orientations on how to use the relief items, such as on how to use plastic sheet and rope effectively to set up or improve emergency shelters. Further, IOM assisted extremely vulnerable families with transportation of items, site preparation, and shelter set-up through cash-for-work.

IOM has also made significant progress on site development, mapping the camps and improving access through construction or upgrading of roads and footpaths.

SYRIA - Shelter solutions

Conflicts and violence in Syria has displaced about 2.8 million people during the year 2017. IOM provided emergency shelter solutions and NFIs to affected communities across Syria, including in hard-to-reach areas. In northern Syria, over 250,000 people were assisted with essential NFIs and winterization items. An IOM-managed pipeline enabled IOM and other INGO/NGO partners to ensure the distribution of life-saving items in the most effective and efficient manner. IOM also monitored and verified the delivery of the items to implementing partners and beneficiaries to ensure the highest possible levels of accountability.

IOM developed Housing, Land and Property (HLP) rights due diligence guidelines (supporting the humanitarian community in reducing the risk of cross border shelter programming) which have been endorsed by the Shelter Cluster, with 40 individuals representing 30 shelter organizations trained on the guidelines.

In 2017, IOM also rehabilitated 37 unfinished buildings providing almost 2,000 beneficiaries with more appropriate shelter. A further 14,000 families benefited from the replacement of their tents in IDP sites. In southern Syria, IOM reached over 9,000 IDPs through the provision of Sealing Off Kits, winterization NFI kits and olive pit bricks (as alternative fuel to heat and cook with), responding to the needs of a total of 1,740 households.



Demonstration during a distribution in Balukhali, Bangladesh, © IOM Bangladesh 2017



Using local materials to improve shelters, Bangladesh, © IOM Bangladesh 2017



Contractor working on housing rehabilitation, Syria, © IOM 2017

IRAQ - Conflict response

The ongoing insecurity in Iraq due to conflict has seen IOM shelter-NFI operations continue to respond to needs across the country, reaching over 87,000 households. The response has focused on those fleeing areas of conflict such as during the Mosul offensive, as well as those returning to their homes. Tents (14,500 units), shelter-related items, sealing off kits, and assistance to repair damaged housing and collective shelters were provided. In order to be able to quickly respond to population movements in areas such as Ninewa, Salah-Din, Baghdad, Anbar and Kirkuk, Shelter and NFI kits were prepositioned across the country.



NFI distribution to assist displaced population in Badoush, Iraq © E.M. Taher/IOM 2017

SOUTH SUDAN - Shelter lead agency

As conflict in South Sudan continued to generate massive displacement within the country and around the region, IOM continued to respond at scale to the crisis. As Cluster Lead Agency of the Shelter-NFI (S-NFI) Cluster which was activated in 2011, IOM together with World Vision (Cluster Co-Lead) continued to provide support and coordination to 23 partners including six National NGOs. In 2017, the Cluster reached 939,191 individuals (92% of HRP target) through Shelter-NFI activities (S-NFI).

As cluster lead, IOM manages the core S-NFI pipeline which has been active in South Sudan since Cluster activation. Through the pipeline, and in close collaboration with the Logistics Cluster, pipeline partners in 2017 were able to reach 876,860 individuals through S-NFIs (in-kind response). A video on the pipeline is available at <https://bit.ly/2GtFFBc>

IOM response team delivers S-NFI services through in-kind and Cash-Based Interventions (CBI) implemented by its mobile team (based in Juba) and its static team in Wau. 266,945 individuals (or 81% of HRP target) were reached with in-kind distributions through 36 interventions across the country. A comprehensive rehabilitation of Wau PoC site was carried out reaching 35,303 people. Two CBI interventions started in 2017: 1) A shelter upgrade project in Wau Protection of Civilian (PoC) site, and 2) The construction of fuel efficient stoves in Bentiu PoC site. Both CBIs centered around community participation and included commodity vouchers, cash-for-work grants and gender responsive skills training components, reaching 22,579 individuals and 100,620 individuals respectively (until project close in March 2018). See more about the Wau project at <https://bit.ly/2lqqMMP> and access a publication on both CBI projects through this link: <https://goo.gl/L8L7na>.



Shelter upgrading in the Wau PoC site, South Sudan © A. McLaughlin/IOM 2017



Bentiu PoC site, South Sudan © A. Martinez Nero/IOM 2017

DOMINICA - Hurricane response

On 18 September 2017, Hurricane Maria made landfall on Dominica. Approximately 25,000 houses were severely damaged or destroyed, affecting the majority of the 70,000 inhabitants of the island. IOM coordinated the Shelter-NFI response from the emergency phase, which supported the government's response to the hurricane. 63 government-provided collective centers were initially opened, while distributions took place in villages all over the island. In the last three months of 2017, approximately 2,400 beneficiaries were reached and provided with both household items and shelter NFIs. These donations were given in-kind to IOM from various donors. IOM also supported three rounds of the Displacement Tracking Matrix (DTM) after the hurricane, and trained 70 carpenters through a "Build Back Safer" campaign, consolidating grounds for the next stage recovery operations in the area.

NIGERIA - Responding at scale

The protracted crisis in Nigeria has continued to cause further displacements with up to 7.7 million people affected. As of December 2017, there were 2.1 million individuals with shelter needs and while some have started returning to their areas/villages of origin, high numbers are still unable to return to their homes due to the insecurity created by non-state armed actors. Since the beginning of the crisis, IOM has co-led the Shelter-NFI and Camp Coordination and Camp Management (CCCM) working group, supporting the National Bureau of Statistics (NBS) in Displacement Management System (DMS) and the National Emergency Management Agency (NEMA) in Shelter/NFI and CCCM.

In 2017, IOM supported over 380,000 people with its Shelter-NFI activities. More than 21,000 shelters were constructed – both emergency and transitional shelters, while about 28,000 households were assisted with NFIs. More programs were also launched, such as one assisting returnees with in-kind and cash assistance to rehabilitate their damaged houses along with other programs for rehabilitating community infrastructures through cash-for-work (CFW). A shelter reinforcement program was also initiated to assist individuals who had been living in emergency shelters for more than one year with shelter upgrades and reinforcement with required materials and tools accompanied by proper sensitization and capacity building through camp committees. IOM is also actively engaged in site planning and decongestion of overcrowded camps, and has produced over 15 site plans.



NFI distribution in Dominica, © IOM Dominica 2017



Ongoing reinforcement of old emergency shelters, Umbaza Rockside Camp, Pulka, Borno state, Nigeria © IOM Nigeria 2017



Transitional shelter, Bakasi Camp, Borno State, Nigeria © IOM Nigeria 2017

Global updates

IOM'S ROLE IN THE GLOBAL SHELTER CLUSTER

IOM continues to maintain a strong role in support of the Global Shelter Cluster (GSC), as well as in field-level shelter coordination. Globally, IOM is a key player in the Strategic Advisory Group within the GSC, leading the Shelter Projects Working Group and having co-led the GBV Risk Reduction Working Group in 2016-2017.

QUALITY CONTROL FOR NFIs

To ensure the quality of aid items distributed by IOM, three sets of quality control equipment have been obtained and are based in the Philippines, Turkey and Bangladesh thereby helping to build self-sufficient quality control capacities. In 2018, IOM plans to develop and hold tailored trainings on Quality Control in cooperation with the International Committee of the Red Cross (ICRC) in the Philippines and Bangladesh. This will cover the theoretical and practical aspects of the work, including a simulation of a visual assessment.

GENDER-BASED VIOLENCE RISK REDUCTION

Within the broader "Call to Action on Protecting Girls and Women in Emergencies", in 2017 IOM continued to mainstream GBV risk reduction in various sectors, including Shelter, Site Planning and Camp Management, at both global level (guideline development) and country level (shelter-NFI workshops with GBV mainstreaming components, guideline testing). Visit www.sheltercluster.org/gbv for more information.

GLOBAL PREPOSITIONING OF STOCKS

IOM continues to enhance its preparedness capacities by improving supply chain and procurement mechanisms, as well as quality control systems. This has increased 777.9 m³ in 2017, an increase of 50% from 2015. Global stocks have been released to Bangladesh, Nepal, United Republic of Tanzania, Ethiopia, Yemen and Sint Maarten in 2017 and a fourth global warehouse is under discussion in 2018.

MASS SHELTER CAPABILITY PROJECT, PHASE II

IOM is working with E.U. Civil Protection on several components of the second phase of the *Mass Shelter Capability Project (MaSC II)*, which is focusing on the development of a decision-making tool and recommendations that target national authorities within Europe, to identify the conditions under which mass shelter capabilities should be deployed in emergency contexts, and the requirements for deployment.

Featured Publications

Shelter Projects. Case studies of humanitarian shelter and settlements.



Through the dissemination phase of the interagency publication Shelter Projects on behalf of the Global Shelter Cluster, in 2017 IOM has produced short thematic compilations of projects in urban areas, and projects in Europe. Further thematic editions include a Cash compilation and more geographic compilations. These are available online at www.shelterprojects.org.



IOM Emergency Manual



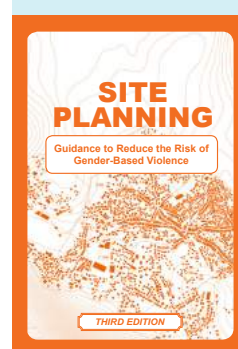
In 2016, IOM launched the updated version of its Emergency Manual, designed primarily to provide guidance to IOM staff operating in humanitarian contexts, now available on an electronic platform at the link below. There are several entries related to Shelter-NFI operations and coordination, which can be found at emergencymanual.iom.int.

Pakistan Shelter Research Report and Shelter Guide



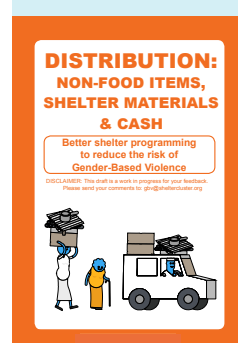
The Pakistan Shelter Research Report was finalized and released in late 2017. A guide on the most flood resistant typologies, as well as the evidence-based research report are available online. These have been released after diligent research on the effects of both standing water and heavy rains materials. Learn more from the research project (<https://bit.ly/2pYqAgY>) and the Pakistan Shelter Guide (<https://bit.ly/2GQinCA>) through the links.

Site Planning - Guidance to Reduce the Risk of GBV: Third edition



This booklet on site planning and the reduction of gender-based violence provides practical guidance for measures which can be taken to reduce risks to affected populations around camps and sites. Based on field testing in Nigeria, the latest edition looks more closely at upgrading existing, often spontaneously settled sites. Learn more at sheltercluster.org/gbv and through a video at: <https://bit.ly/2Jb27eM>

Shelter & Cash distribution - Guidance to reduce the risk of GBV



This guidance looks at the distribution process and highlights areas in which GBV can be mitigated through good programming, providing examples. The second version of the booklet also highlight programmatic issues that are specific to cash based interventions.

More IOM shelter-related resources are available at emergencymanual.iom.int and www.iom.int/shelter

Contact

Shelter Support Team
Email: sheltersupport@iom.int
Website: www.iom.int/shelter

International Organization for Migration
Route des Morillons 17, 1218 Grand-Saconnex
Geneva, Switzerland
Website: www.iom.int



Shelter upgrade training, Wau
Protection of Civilians (PoC) site,
South Sudan, © R. Tupaz, IOM 2018

This publication has been issued without formal editing by IOM.

The opinions expressed in the report are those of the authors and do not necessarily reflect the views of the International Organization for Migration (IOM). The designations employed and the presentation of material throughout the report do not imply the expression of any opinion whatsoever on the part of IOM concerning the legal status of any country, territory, city or area, or of its authorities, or concerning its frontiers or boundaries.

IOM is committed to the principle that humane and orderly migration benefits migrants and society. As an intergovernmental organization, IOM acts with its partners in the international community to: assist in meeting the operational challenges of migration; advance understanding of migration issues; encourage social and economic development through migration; and uphold the human dignity and well-being of migrants.